



The
Whitstable
School

Sixth Form Prospectus 2024



The Whitstable School Sixth Form

Welcome to The Whitstable School Sixth Form, where academic excellence and personal growth converge to shape the leaders of tomorrow. We want to prepare our students for the 21st century to be able to have initiative, personal responsibility and to be able to discern information, be broad-minded, communicate effectively, show compassion and understanding.

We have developed an innovative and fresh approach to Sixth Form studies, offering a dynamic curriculum for our students. With a clear commitment to the personal development and well-being of each individual, we support students in selecting a programme which suits their specific strengths, interests and abilities, and provides clear routes of progression for their future.

We offer a unique approach in that we build our curriculum around our students. We provide a full range of both vocational and academic courses. We have the highest expectations for our students, and place the utmost importance on supporting them to meet their full potential. This year, we are introducing a range of A levels to meet the academic needs of our cohort.

From specialist sports resources; our own dance theatre; dedicated sixth form study spaces, a careers hub and excellent ICT provision, this new curriculum broadens the number of subjects we are able to offer.

We also believe in the development of independent learning and transferrable skills and, as such we offer a varied enrichment programme including work experience opportunities, overseas trips, mentoring and support for younger students, and the chance to organise and oversee fundraising events to name a few.

We welcome applications from external students as well as those studying in Year 11 at The Whitstable School and look forward to working with you in the future.

Contents



Vocational - BTEC/WJEC

Page 3	Business Studies
Page 4	Computing
Page 5	Criminology
Page 6	Forensic Investigation
Page 7	Health and Social Care
Page 8	Music Performance
Page 9	Performing Arts Acting
Page 10	Performing Arts Dance
Page 11	Sport

A Levels

Page 13	English Literature
Page 14	Film Studies
Page 15	Fine Art
Page 16	Mathematics
Page 17	Photography
Page 18	Politics
Page 19	Psychology
Page 20	Sociology
Page 21	Spanish
Page 22	Textile Design
Page 23	Sixth Form Opportunities
Page 24	How To Apply

Business

BTEC Level 3 Extended Certificate



This course would suit students who are interested in learning about the business sector. Students can expect to learn about the purposes of different businesses, how to develop a marketing campaign, as well as the importance of personal and business finance.

Course Structure

This course consists of four units. Two of the units are externally assessed examinations where you will have an opportunity to resit each examination once. The examination windows for these units are January and June of each academic year. The rest of the units are coursework based and will be assessed by the teacher.

Units of Study

Unit 1: Exploring Business. In this introductory unit, students study the purposes of different businesses, their structure, the effect of the external environment, and how they need to be dynamic and innovative to survive.

Unit 2: Developing a Marketing Campaign.

Students will gain skills relating to, and an understanding of, how a marketing campaign is developed

Unit 3: Personal and Business Finance.

Students study the purpose and importance of personal and business finance. They will develop the skills and knowledge needed to understand, analyse and prepare financial information.

Unit 27: Work experience.

Students take part in work experience in the summer of Year 12, then write about it for this unit.

Progression and Career Opportunities

Future careers include accounting, banking, insurance, human resources, marketing and sales. Students can go on to study business management, human resources, International business or marketing at university.

Business is a broad subject that can mix with a combination of any other vocational or academic courses.

Computing

BTEC Level 3 Extended Certificate



If you enjoyed studying Computing and/or Creative iMedia at GCSE level, then our Level 3 BTEC course is the perfect choice for you. The Level 3 BTEC in Computing will help you to develop your skills in a range of different industry areas including software design and development, computer systems, impact of computing, IT security, encryption and Digital Graphics and Animation

Course structure

This course consists of 4 different units. Two of the units are an externally assessed examination and the other two units are assessed internally. The two external examinations are both written papers set and marked by the exam board making up to 58% of the total qualification.

Units of Study

Principles of Computer Science

In this unit student cover the principles that underpin all areas of computer science. Students will develop computational thinking skills, and apply those to solve problems.

Fundamentals of Computer Systems

In this unit students will study the fundamental principles of how computer systems work, including the role of hardware and software, the way components of a system work together and how data in a system is used.

IT Systems Security and Encryption

In this unit students will study IT system security threats and the methods used to protect against them. Students undertake activities to protect IT systems from security threats, including data encryption.

Digital Graphics and Animation

In this unit students will study the principles, processes and implications of using digital formats to produce and process graphics and animation to meet identified requirements.

Progression and Career Opportunities

Skills in Computing are highly sought after by many employers and are seen as essential in the careers for the future. Students following this course may progress onto further education studying a bachelors in Computing, become a freelance developer or seek apprenticeship positions in the many Computing industries - Software development, Games Production, Website Development, Artificial Intelligence, Cloud Computing, Machine Learning, Graphic Design, Social Media, Cyber Security, and Program Design and Production.

Criminology

WJEC Level 3 Diploma



Criminology is the scientific study of criminal behaviour, on individual, social and natural levels, and how it can be managed, controlled and prevented. In particular, the course explores what crime is, how it is socially constructed, who commits crimes and the criminal justice process, once a crime has been committed. This course will enable students to develop their critical analysis and judgement. It will enable them to articulate arguments effectively in class discussions and written assessments.

Course Structure

This course is assessed through a combination of two written examinations, set and marked by the exam board. Plus two controlled assessments set and marked by the teacher. All assignments are worth 25% of the final grade.

Units of Study

Unit 1 Changing Awareness of Crime. Not all types of crime are alike. What different types of crime take place in our society? What kinds of crime exist about which we know very little, or which are simply not reported to the police and the media?

Unit 2 Criminological Theories - examination

How do we decide what behaviour is criminal? What is the difference between criminal behaviour and deviance? How do we explain why people commit crime? What makes someone a serial killer, or abusive to their own families? Criminologists have produced theoretical explanations of why people commit crime, but which is the most useful? Are these theories relevant to all types of crime?

Unit 3 Crime Scene to Courtroom

What are the roles of personnel involved when a crime is detected? What investigative techniques are available to investigators to help to identify the culprit? Do techniques differ depending on the type of crime being investigated?

Unit 4 Crime and Punishment - examination

Why do most of us tend to obey the law even when to do so is against our own interests? What social institutions have we developed to ensure that people do obey laws? What happens to those who violate our legal system? Why do we punish people?

Progression and Career Opportunities

Criminology is directly relevant to careers in social work, the legal profession, community development work and youth work. Students may go on to study criminology at degree level or move into a related field of social work, sociology, psychology or law.

Forensic Investigations

BTEC Level 3 Foundation Diploma



This course is directed at students who wish to study forensic investigation to deepen their knowledge of the practical and investigative approaches. The students who take this course will achieve a better understanding of the forensics investigation and processes involved in analysing evidence.

Course Structure

This course consists of six units; 4 mandatory units and 2 optional units.

The units studied give the student a good understanding of the investigative approaches to forensic investigation.

There are two externally examined units that are studied during the course.

Units of Study

Unit 1: Principles and applications of science. In this unit you will explore the basic principles and application of science which will be assessed externally.

Unit 2: Practical scientific procedures and techniques. In this unit you will explore in detail: quantitative laboratory techniques, calibration, chromatography, calorimetry and laboratory safety.

Unit 3: Science investigation skills. In this unit you will explore in detail scientific investigation skills need for completion of valid investigations. This is examined externally.

Unit 4: Forensic investigation procedures in practice. In this unit you will explore in detail the methods used to investigate a crime scene. This includes collection, analysing, reporting chemical, physical and biological evidence.

Unit 8: Physiology of Human Body Systems. In this unit you will explore in detail; three body systems (musculoskeletal, lymphatic and digestive) and how these systems function and dysfunction.

Unit 9: Environmental Forensics- In this unit you will explore the use of environmental forensics in crime, covering the study of taphonomy and the main methods used in collecting and analysing entomological, soil, pollen and diatom evidence.

Progression and Career Opportunities

Progression to university could include courses in forensic investigation, nursing or biosciences. Apprenticeships are available in applied science, laboratory technician and environmental science. Or you could progress to employment into the area of forensic science, nursing or microbiology.

Health and Social Care

BTEC Level 3 Extended Certificate



This course is directed at students that would like to work within the care sector. Students can expect to gain a well rounded view of the healthcare industry and links to current news and legislation surrounding the healthcare system.

Course Structure

This course consists of four different units. Two of the units are externally assessed examinations where you will have an opportunity to resit each examination once. The examination windows for these units are January and May/June of each academic year.

Units of Study

Unit 1: Human Lifespan Development. In this unit you will explore the development of people in different life stages including their physical, intellectual, emotional and social development. You will explore factors that may affect the development of people within different life stages including cultural, environmental, health, genetic influence, social and economic.

Unit 2: Working in Health and Social Care. This unit explores the world of work within industry and the regulations surrounding health care systems. This unit gives students a real insight into the world of work and broadens knowledge of opportunities within industry.

Unit 11: Psychological Perspectives. This unit examines how psychological perspectives are applied to the understanding of human development and contribute to the understanding of specific human behaviours. The unit moves onto looking at how psychological perspectives are managed and treated.

Unit 5: Care and Support. This synoptic unit consolidates the principles, values and skills underpinning the care and support needs of individuals. This includes the importance of promoting equality and diversity. The unit also encompasses investigating the roles of professionals and how they work together to provide the care and support necessary to meet individual needs.

Progression and Career Opportunities

Students following this course may progress into higher education into a variety of degree subjects, midwifery, nursing, social work, occupational therapy, mental health nursing, counselling and teaching. There may be opportunities to progress onto apprenticeships at Level 4 and above, or gain employment within the sector.

Music Performance

BTEC Level 3 Extended Certificate



While focusing on developing ensemble music performance skills, this course also offers a broader understanding of relevant complementary areas of the music sector, such as composition, live events and technology. It is designed to support progression to more specialist music courses in higher education. This will allow you to choose a specific specialist area in which to develop additional skills. It is ideal for you if you are interested in learning about the music sector, with a view to progressing to one of a wide range of opportunities.

Course Structure

This course consists of four different units. Two of the units are externally assessed examinations where you will have an opportunity to resit each examination once. The examination windows for these units are January and May/June of each academic year.

Units of Study

Unit 1: Practical Music Theory and Harmony.

In this unit you will develop knowledge and understanding of music theory and harmony, and apply your understanding in practical scenarios.

Unit 2: Professional Practice in the Music Industry

This unit examines the world of work within industry and explores what it is that makes someone a professional in the music industry and how to put forward a bid for work.

Unit 3: Ensemble Music Performance.

In this unit you will work as part of a musical ensemble and develop their skills and techniques in rehearsal and performance.

Plus one optional unit.

Progression and Career Opportunities

This qualification gives students transferable and higher-order skills that are valued by higher education providers and employers, for example performance techniques, communication skills, team working. It also gives students an opportunity to focus on their personal vocal/instrumental technique.

Performing Arts Acting

BTEC Level 3 Extended Certificate



This qualification offers an engaging programme to support learners who want to pursue a career in acting. It can prepare learners for a range of Apprenticeships in performance-related areas. When taken alongside further Level 3 qualifications, it supports access to a range of higher education courses in the performing arts sector.

Course Structure

The qualification comprises of four units. Units 1 and 3 are externally assessed by a Pearson examiner.

Units of Study

During the 2 years you will develop your confidence and work closely with other students to build a sense of unity and collaboration; this is an exciting time for our Performing Arts department and you can be part of something special as we continue to grow the course. You will study a variety of units and gain a broad range of performance skills and knowledge. You will have regular performance workshop support where you will develop your craft in terms of voice and movement as well as specific support from current professionals working within the performing arts business.

During the course you will complete 4 units of work, they are broken up into the following:

- Unit 1 – Investigating Practitioners Work (External Exam)
- Unit 2 – Developing Skills for Live Performance (Internal Assessment)
- Unit 3 – Group Performance Workshop (External Assessment)
- Unit 19 – Acting Styles (Internal Assessment)

Progression and Career Opportunities

This qualification provides learners with the opportunity to develop all-round performance skills and transferable skills such as self-confidence, self-presentation, personal discipline, time management and organisational skills which are highly regarded by higher education and employers.

Performing Arts Dance

BTEC Level 3 Extended Certificate



This vocational course is equivalent to one A Level and enables students to develop a practical and theoretical understanding of dance through technique classes, group performance work, choreography workshops, dance history research and presentation projects to build a range of interpersonal and creative skills.

Course Structure

The qualification comprises of four units. Units 1 and 3 are externally assessed by a Pearson examiner.

Units of Study

Unit 1: Investigating Practitioners' Work

Students investigate the work of dance practitioners Bob Fosse and Matthew Bourne, discuss their influences, analyse extracts from works such as 'Chicago' and 'Swan Lake' and compare their use of themes, developing their critical analysis skills. Assessment: 3-hour supervised exam.

Unit 2: Developing Skills for Live Performance

Students focus on understanding the skills of a dancer working in a range of styles such as ballet, jazz, commercial and contemporary. Assessment: Presentation, digital log and 2-5 minute performance.

Unit 3: Group Performance Workshop

Dancers interpret a stimulus provided by the exam board such as a poem, photograph, prop or historical event. Taking responsibility as rehearsal director for a section each, students research, improvise, select, develop and refine movement material applying personal management skills. Assessment: 3-hour supervised log and 10-20 minute choreography.

Specialist Option Unit

Our dance tutors will select one of the following styles to explore: Ballet, Jazz, Commercial/Street, Contemporary OR Physical Theatre Movement in Performance. Assessment: Presentation, digital log and 3-5 minute live performance.

Progression and Career Opportunities

Students may continue their dance training in higher education or draw on transferable skills such as teamwork, leadership and creativity. Careers include teaching privately/in state schools/in community/fitness settings, performing and creating.

Our dance studio has a fully sprung floor, mirrors, barres and projector. Our on-site theatre, The Stage, provides ample performance opportunities.

Sport

BTEC Level 3 Extended Certificate



The Sport BTEC course enables students to learn about the theory behind sport in great depth. It gives them the opportunity to gain experience for use in the work place or as a stepping stone to higher education. The variety of topic areas gives students the opportunity to study most areas of sport and allows them to decide which field they wish to work towards.

Course Structure

Students will cover a combination of units which will be assessed both internally and externally. There will also be written examinations. The following units are mandatory within the course: Anatomy and physiology, fitness training and programming for health sports and well-being and professional development in the sports industry.

Units of Study

Unit 1: Anatomy and Physiology. This unit develops understanding of the bodies systems. You will explore the structure of the skeletal, muscular, cardiovascular, respiratory and energy systems along with sport performance.

Unit 6: Sports Psychology This unit covers the psychological dimensions of sport and introduces psychological techniques that can be used to enhance sporting performance.

Unit 2: Fitness and training for health, sport and wellbeing. A pinnacle unit that is shaping all scopes of life, not just SPORT. This is an eye opening unit with many supportive lifestyle influences. This allows you to dive deep into fitness training and programming for health, sport and well-being. Within this unit we will develop understanding of positive and negative lifestyle factors and health screening tests.

Unit 3: Professional development in the sports industry. Research the sports industry and prepare yourself within a career in sport.

Progression and Career Opportunities

Students will be able to progress into a range of job opportunities such as; a fitness instructor, personal trainer, physiotherapist, sports scientist, sports therapist, sports psychologist, PE teacher and sports coach. Students who have studied this course have gone on to study sport management at university.



English Literature

A Level



Studying an A-level in English Literature offers an exciting and unique opportunity: the chance to explore the narratives, worlds and imaginations of others. Through studying some of the most celebrated works of the literary tradition, you will explore new and immersive worlds and vicariously live lives that you had never dreamed possible. You will develop a range of transferable skills: close analysis, interpretation, research skills, academic reading and writing, debate and evaluation skills – most of all, you will develop a love of language and the writer's craft. You will also have the opportunity to see extracts from a range of diverse texts and consider them using a range of critical theories, including Feminist, Marxist and Postcolonial literary theory. You will then be able to select a text of your choosing for one of the two coursework essays you complete.

Course Structure

Assessment is conducted by 80% examination across two papers. There is also a Non-Examined Component, which consists of two 1500 word essays on a text of the student's choice. These are conducted in non-exam conditions.

Overview

Students will study the Tragedy genre, including *Othello* and *Richard II* by William Shakespeare, and *The Great Gatsby* by F Scott Fitzgerald. Students will also study a range of crime fiction, including *When Will There Be Good News* by Kate Atkinson and *Brighton Rock* by Graham Greene. We also study *The World's Wife* by Carol Anne Duffy for the poetry coursework component.

The skills gained through the study of English Literature are immeasurable. Students are able to broaden their knowledge, not only of a wide range of texts, but also of human relationships, history and different views of the world. Throughout the two year course, students are trained to become more independent and perceptive in their reading skills, developing their powers of analytical and evaluative thinking.

Progression and Career Opportunities

All universities see an A Level in English Literature as a major asset to any course, as it exhibits that students are academically able, well-read and capable writers. Specific careers which are benefitted by this subject are publishing, journalism, law, broadcasting, media, acting, teaching and advertising, among many others. An A Level in English Literature will open many doors to a successful future.

Film Studies

A Level



Film Studies is both an academic and highly practical A Level with complete focus on a relatively young and dynamic medium. The course is designed to consider a diverse range of film viewers and makers from around the globe.

This course will develop your critical faculties and your ability to read any film.

The Film Studies A Level is an excellent introduction to the Film Industry, a lucrative and growing sector in this country. We use the same language you would use on a working set and create a production of your own which has the opportunity for entry to National Film Awards and prizes.

Course Structure

You will be assessed through two terminal exam papers and a non-exam assessed piece of practical work after two years of study:

Paper One Varieties of Film and Filmmaking (35%):

Classical Hollywood and New Hollywood (1930-1990) Comparative Study

New American Film (2005 onwards)

British Film since 1995.

Paper Two Global Filmmaking Perspectives (35%):

Global Film (two film study)

Documentary Film.

Silent Film.

Experimental Film.

Non-examined Assessment (30%): Short Film Production and Evaluation (30%)

Progression and Career Opportunities

Film studies can help with the analytical skills required in a range of professions.

Students of this subject may choose to follow a course in a similar area at degree level leading to career paths in filmmaking, working within digital media and animation.

Within film, TV and video industries, potential job roles include film/video/television editor, camera operator, photographer, art director, TV or film producer or production assistant, runner, location/props manager or programme researcher. In addition, some business areas, such as advertising, marketing and communications, can also utilise the creative and analytical abilities of Film Studies students. The research and communication skills you develop and the ability to project manage and organise your time effectively will make you attractive to employers in a wide variety of fields.

Fine Art

A Level



A-Level Fine Art focuses on the disciplines of drawing, painting, sculpture, print making and mixed-media to a high level. Students explore techniques and media at a more refined and more in depth level than they did at GCSE and their work will be independently led as preparation for further study at degree level or employment. This course aims to encourage a personal and individual approach to Fine Art and the many ways in which to express yourself. Students will be assessed on their originality and creative ability and be expected to develop their work independently.

Course Structure

Throughout the course students will be introduced to new techniques and refine existing ones - painting, drawing, collage, print making and mixed media.

The course is specifically geared to encourage students to follow their own artistic path suited to their own interests and career aspirations. The work of artists and designers will be explored in relation to their work, developing analytical and critical understanding.

Units of Study

Unit 1 – Non exam portfolio, the personal investigation. 60%, internally and externally assessed.

Work is based on a chosen theme and requires research on related artists, sketchbook work, preparatory studies and final work. Students also submit an essay (1000 - 3000 words) based on contextual studies related to their practical project.

Unit 2 – Externally set controlled test. 40% internally and externally assessed.

The controlled test consists of a range of questions to be used as starting points. The timed element of the unit (15 hours) must be unaided, however the question paper is worked on in lessons to produce developmental work leading up to the practical exam.

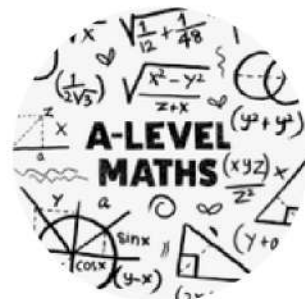
Progression and Career Opportunities

Students can progress on to university to study a range of degrees that could include fine art, illustration or set design. Employment could take the form of a graphic designer, interior designer or art therapist.

Students have the opportunity to exhibit their outcomes and be prepared for a very competitive field of work in the creative industries.

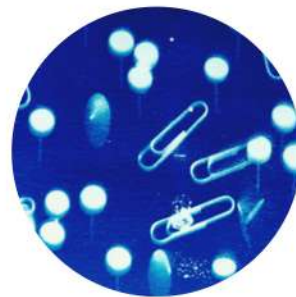
Mathematics

A Level



Photography

A Level



It may be easy to take a photograph, you may have taken several today already, but it is a highly valued skill to be able to harness photography to communicate messages, feelings, and ideas.

The world is addicted to an almost constant flow of visual traffic. Companies need photographers to tell their story just as cultures need photographers to tell theirs. Now, more than ever there is a huge market for photography.

Course Structure

A Level Photography aims to embrace different styles and interests giving students freedom to explore photographs through a range of innovative techniques and processes. Students will take part in a series of exciting workshops before going on to develop highly personal investigations that draw together their visual and analytical understanding.

Units of Study

Unit 1: Non exam Portfolio. The personal investigation. 60%, internally and externally assessed.

Work is based on a chosen theme and requires research on related artists, sketchbook work, preparatory studies and final work. Students also submit an essay (1000–3000 words) based on contextual studies related to their practical project.

Unit 2: Externally set controlled test. 40%, internally and externally assessed.

The controlled test consists of a range of questions to be used as starting points. The timed element of the unit (15 hours) must be unaided, however the question paper is worked on in lessons to produce developmental work leading up to the practical exam.

Progression and Career Opportunities

Due to its balance between visual and academic skills, photography is valued by many career paths within the creative industries, in the media and wider economy. Other career opportunities may include photo journalism, fashion photography, advertising and police evidence photography.

Politics

A Level



Politics is one of the most interesting, academically rigorous and relevant subjects available. You will study societal and political issues in the modern world as well conflicts on both a national and international scale. You will explore a range of real world issues and challenges. You will discuss current affairs on a global scale.

Course Structure

Unit 1: UK politics

You will explore the nature of politics in the UK and how people engage in the political process.

Unit 2: UK Government

You will explore the nature of power in the UK.

Unit 3: Political ideologies

You will explore socialism, conservatism, feminism and multiculturalism.

Unit 4: Global politics

This course is entirely relevant in an ever-changing world. You will be engage in lively and informed debate. If you want to learn about the changes and challenges that are happening in the world today, this is the course for you.

Key topics in this course are:

- Who has power? Is this fair?
- How can we encourage political participation?
- How does politics impact us on a local, national and international level?
- What is the role of the media in politics? Why is it important?

Entry requirements

Preferably a grade 5 or above in English and a humanities subject.

This course sits well alongside English Literature, Film and the Social Sciences.

If you are opinionated and enjoy constructing an argument you will enjoy and succeed in this subject.

Progression and Career Opportunities

Due to the academic nature of this course an A Level in politics is highly sought after by both universities and employers. This course will allow you to develop a balanced and non-judgemental worldview. You will also be able to hone your research, debate and essay writing skills. This course will aid progression on to degrees in history, law, English and the social sciences. Careers could involve those within the media, advertising, legal, communications, social care and political sectors.

Psychology

A Level



The mind is something intangible that exists within our brain; an unseen process of enzymes, chemicals and electric currents. But why is it that some people suffer from stress or mental illness? Or that others are considered abnormal for deviating from social norms? Psychology looks at questions like these and more. Psychology is the scientific study of the mind and human behaviour. Psychologists observe and conduct experiments to find out more about the way people act and interact. They try to understand what motivates, challenges or changes us and use this understanding to help us tackle personal and social problems. AQA A-level Psychology will help you develop a range of skills that will benefit you, whether you decide to go on to further study or the working world, including: analytical thinking, improved communication, problem solving, planning and conducting scientific investigations, analysing and interpreting data and critical reasoning skills.

Course Structure

In AQA A-level there are three exams, each accounting for one third of your A-level. The three exams last 2 hours and are worth 96 marks each. The exams consist of multiple choice, short answer and extended writing questions.

Units of Study

First year of the A level you will start unit 1 - Introductory topics in psychology: learn about conformity, social norms, how the mind remembers and forgets and how children form attachments then 2 - Psychology in context: learn more about the different approaches in psychology and how to design and conduct your own research.

Second year of the A-level will deepen your understanding of human behaviour.

1 - Issues and options in psychology: you'll learn more about psychological concepts, research methods and ethical issues. 2 - Issues and debates in psychology: learn about the fascinating tendencies of human behaviour, with options looking into gender differences and the criminal mind. Then one from each option: Option one: relationships, gender or cognition and development. Option two: schizophrenia, eating behaviour or stress. Option three: aggression, forensic psychology or addiction.

Progression and Career Opportunities

Psychology is a great subject to study because it will not only give you a number of transferable skills, it will also teach you more about the way people think. An understanding of the human mind is useful in a number of careers. Some of the most popular degrees for students who have an A-level in psychology are: Psychology, English studies, Sociology, Business studies, Teaching, Sport and exercise science and Law. Possible career options include: Marketing, Business development, Accountancy, Human resources, Forensic psychology, Occupational therapy, Clinical psychology, Nursing and Teaching.

Sociology

A Level



Sociology is the study of society - how people interact in groups. A level Sociology examines social behaviour from a variety of perspectives: how it originates and then develops, and the ways people are organised into groups according to distinctions such as class, gender and race. We also look at the institutions and forces which shape and are shaped by groups within a society, such as the media, religion and education. It helps you to develop knowledge and understanding of the essential sociological theories and methods (such as Functionalism, Marxism and Feminism) with which sociologists make sense of the diversity of societies, and of the forces which have and will continue to shape social change. Sociology will help you to think about society in a new and critical light, questioning the status quo and developing a sophisticated understanding of the real issues that affect the society we live in.

Course Structure

In AQA A-level Sociology there are three exams, each accounting for one third of your A-level. The three exams last 2 hours and are worth 80 marks each. The exams consist of a mixture of short answer and extended writing questions.

Units of Study

You will learn a number of skills including the use of evidence to support your arguments, how to investigate facts, and critical thinking. It is relevant to the society you live in so you are bound to enjoy learning about topics that are relevant to everyday life.

Year 12: Topics of Study - Education, Methods in context, Theory and methods, Culture and Identity or Families and Households

Year 13: Topics of Study - Crime and deviance, Theory and methods, Beliefs in society or Stratification and differentiation.

Progression and Career Opportunities

Students can go into a variety of degree or job opportunities after studying A Level Sociology, providing an excellent starting point for any social science degree from Business, Economics, Psychology and Politics to Criminology, Law, Philosophy and even further Sociology. Sociology can lead to many career options including teaching, advertising, research, policing, marketing, journalism and business. Sociology is an academic subject teaching you transferable skills so really it's up to you which area of work you choose to go into afterwards.

Spanish

A Level



The increasing globalization of today's society means that there are more opportunities than ever for people who speak a foreign language. Not only will you enhance your linguistic skills, you will also develop your knowledge about matters central to the society and culture, past and present, of the countries where Spanish is spoken. As part of the course you will also study a Spanish novel and a Spanish-language film.

Course Structure

Assessment is conducted at the end of the course through three exams.

Paper 1 (40%): Listening, reading and translation into English.

Paper 2 (30%): Written response to works of literature/film and translation into Spanish.

Paper 3 (30%): Speaking. Discussion of course themes and independent research presentation.

Units of Study

Theme 1: The Evolution of Spanish Society

Theme 2: The Political and Artistic Culture of the Spanish-Speaking World

Theme 3: Immigration and Multiculturalism in Spanish Society

Theme 4: Dictatorship and Transition to Democracy

In addition we will study the novel "Requiem por un Campesino Español" and the film "El Laberinto del Fauno".

Progression and Career Opportunities

A qualification in MFL will open up a world of global opportunities! Students with an A level in Spanish have many routes of progression. A variety of jobs and apprenticeships are available in the travel and tourism industry as well as the hospitality industry (e.g. cabin crew/ chefs) and employers look favourably on candidates with good communication skills and linguistic ability. An A level in Spanish would be evidence that you are ready to study an accelerated programme in another language at university (e.g. Russian/ Mandarin Chinese). Many students choose to do a university course with joint honours: Spanish combines very well with other subjects such as politics, international development, business studies and law to name a few!

Textiles

A Level



The Textile Design course offers the opportunity to develop skills over a broad range of textile and fashion techniques and applications, such as printing, weaving, knitting, mixed media, digital applications, surface design, embroidery and installation. This course aims to encourage a personal approach to a variety of Textile pathways. Students will be assessed on their creative and technical ability and be expected to develop their work independently with teacher guidance.

Course Structure

Throughout the course students will master a wide variety of textile techniques including felt-making, free-machine embroidery, printing, surface manipulation and constructed textiles.

Students will have the option of working within a Fashion, Interiors or Fine Art Textiles direction suited to their own interests and career aspirations. The work of artists and designers will be explored in relation to students own work, developing analytical and critical understanding.

Units of Study

Unit 1 – Non exam Portfolio, the personal investigation. 60%, internally and externally assessed.

Work is based on a chosen theme and requires research on related artists, sketchbook work, preparatory studies and final work. Students also submit an essay (1000–3000 words) based on contextual studies related to their practical project.

Unit 2 – Externally set Controlled Test 40%, internally and externally assessed.

The controlled test consists of a range of questions to be used as starting points. The timed element of the unit (15 hours) must be unaided, however the question paper is worked on in lessons to produce developmental work leading up to the practical exam.

Progression and Career Opportunities

After completing this course, students may progress onto higher education into a variety of degree subjects, that include textiles design, fashion marketing or interior design. There may be opportunities to progress onto apprenticeships or employment in the creative industry.

Sixth Form Opportunities

Working to support you



At The Whitstable School Sixth Form we have a range of opportunities available to you. Life in the Sixth Form is very much based around the idea of a community, the core of which is the Sixth Form Study area and Upper Cove.

We work with local universities to have guest speakers in or to visit the campus to see latest facilities.

We also have teambuilding trips to Go Ape, Gravity, The Olympic Park, Westfield Shopping and Bluewater.

Careers advice on a range of employment areas and apprenticeships is available through our careers advisor and specialist support is on hand for your UCAS applications if you decide to go to university.

We also have a range of guest speakers in from industry and a yearly careers fair.

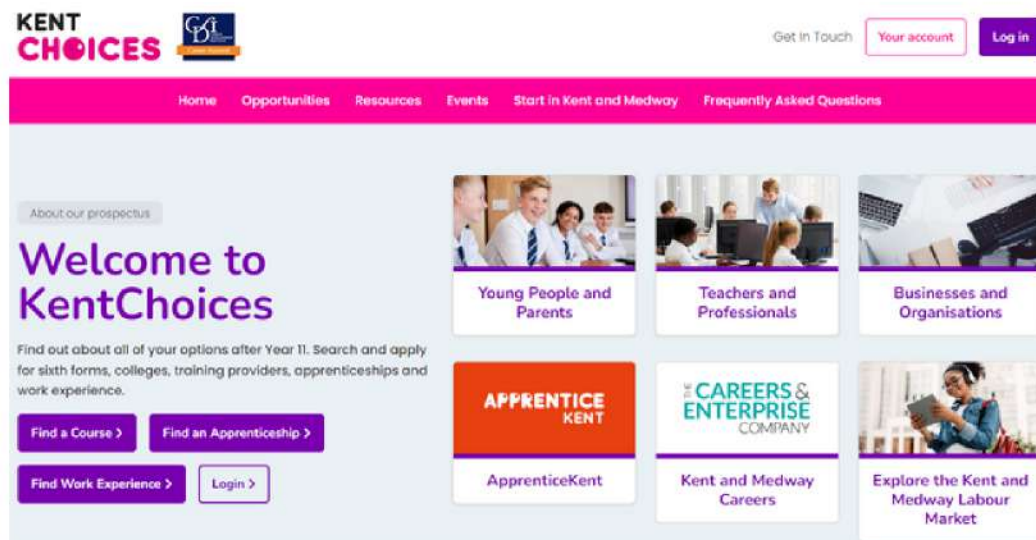
We have our own study area where you can relax between lessons and borrow a chromebook to use with your studies. There are also times you can access the wider school facilities such as the gym or the 3G pitch.

Our enrichment programme covers areas such as young drivers, work experience and skills needed for employment. In personal development time we cover a range of topics that include a full PSHE curriculum and study skills. We also offer MOOCS courses and the Extended Project. Students are also invited to be involved as ambassadors for school events and we encourage our students to get involved in all aspects of the school community. In the last term of Year 12 you can have the opportunity of going on a work experience placement for a week.



How to Apply

The application process



All students are required to apply through Kent Choices online application process. Firstly, type in the following website or search up 'Kent Choices' Support is also available through mentor time and with our careers advisor.

If you need to reset your password please see someone from the Year 11 Team.

Once you have signed in you will be able to favourite courses and make an application.

We welcome applications from external students too.

For more information please contact

Tel: 01227 931300

Email: tw_sixthform@swale.at

Students will have time in school to meet with our careers advisor and discuss their future pathway. We also have visits and talks from external providers to ensure unbiased careers information is passed on.

Students applying to us will be invited for an interview by the Head of Sixth Form, this is an opportunity for courses to be discussed in more detail.

We look forward to hearing from you!



CONTACT

The Whitstable School Sixth Form
Bellevue Road Whitstable
CT5 1PX



Telephone: 01227 931300
Email: tw_sixthform@swale.at
Web: www.thewhitstableschool.org.uk
Twitter: @TheWhitSchool