



# The Whitstable School **STEM Pillars**



**Adaptive  
Curriculum**

Our curriculum is designed to instil a growth mindset and a love for lifelong learning. Students will be equipped with the adaptability and resilience required to pursue future challenges and achievements.



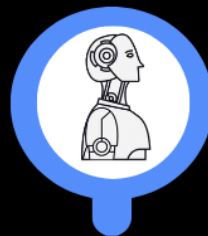
**Interdisciplinary  
Connections**

Overlapping science, technology, engineering, and mathematics, our curriculum acts as a whole package. Developing the basis for our student's knowledge and application skills for future choices in their learning processes.



**Real-World  
Relevance**

Connecting theoretical knowledge to real-life scenarios, students will develop a profound appreciation for the relevance of STEM in solving complex problems and addressing global challenges that our world is continuously faced with.



**Technological  
Fluency**

First-hand experience with tools, apps and new technologies. Preparing them to contribute to an increasingly digital world, as an independent learner.



**Critical Thinking  
and Problem-Solving**

Students will learn to approach problems analytically, observing the relationships between different elements, identifying patterns, and using logical thinking to solve problems.



**Inquiry-Based  
Learning**

By engaging in practical, hands on experiments, projects and group activities. Students will have a chance to enhance their STEM disciplines and develop their TRACK values.