

08 NOVEMBER 2024

NEWSLETTER

Dear families,

The first week of Term 2 has begun, and we are thrilled to dive into exciting season ahead! We have some wonderful Christmas events planned for this term and we can't wait to share with you. Be sure to keep an eye on our social media for the latest updates. Here is to a fantastic start of term!

Key Dates:

- 18 November 2024 - Childhood Immunisation programme
- 20 November 2024 - Year 10 Aspire Evening
- 29 November 2024 - Staff Development Day
- 17 and 18 December - Christmas Variety Show
- 18 December 2024 - Christmas Dinner
- 20 December 2024 - Non Uniform Day
- 20 December 2024 - Term 2 Ends (Early Finish at 12:45)

Staff Update

- **Exams Officer now Mrs J Deadman**
- **Head of Year 9 Mr Waters has been replaced by Mr Dowling**

 The Whitstable School
LEARN LOCALLY, THINK GLOBALLY

**SIXTH FORM
OPEN EVENING**
28 NOVEMBER 2024
5.30PM - 7PM

Bellevue Road,
Whitstable, Kent CT5 1PX

TELEPHONE: 01227 931300
WWW.THEWHITSTABLESCHOOL.ORG.UK



Reminder: Sixth Form Evening

Don't miss our Sixth Form Evening on 28 November 2024. This event will give you the opportunity to speak to subject leaders and find out more about life in the Sixth Form and our many exciting academic, sporting and vocational pathways!

For more information and to register, please visit [Kent Choices](#).



Artsmark
Gold Award
Awarded by Arts
Council England



ON TRACK TO EXCELLENCE

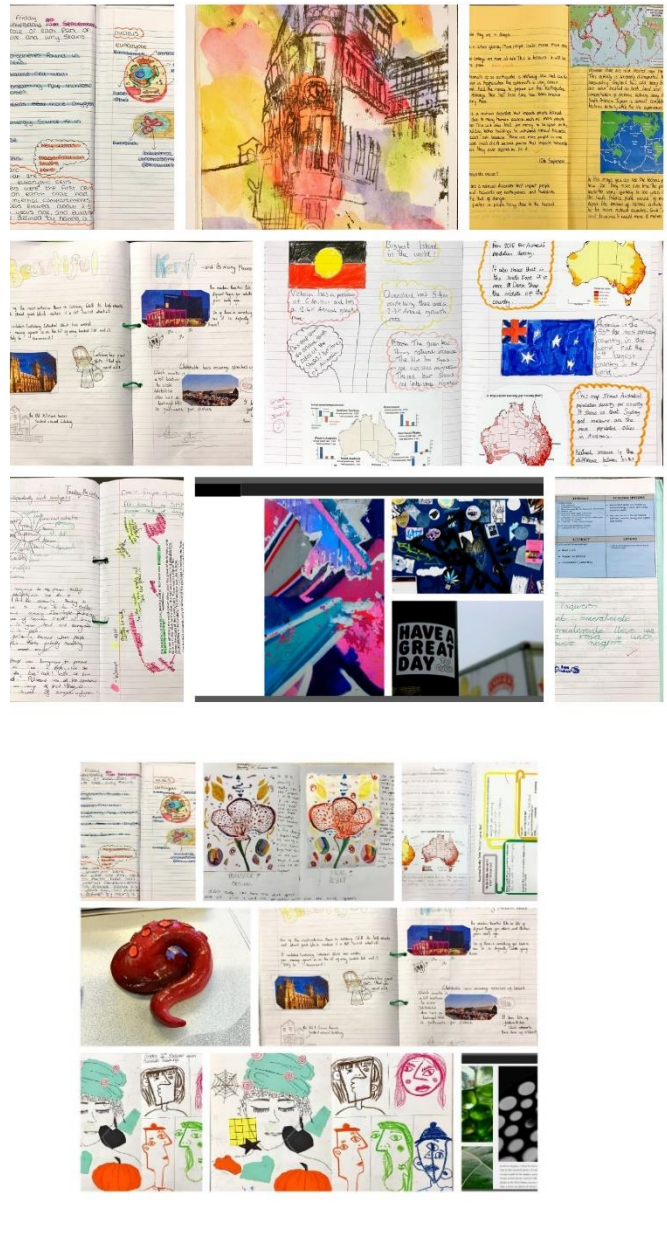
A member of Swale Academies Trust

Registered Office: Ashdown House, Johnson Road, Sittingbourne, ME10 2JS

Registered in England No. 07344732

Inspire and Shine

Shine bright, young stars! ✨ ✨
 At the end of our last Term, our Inspire and Shine Initiative celebrated the amazing work of our talented students across all subjects. 🏆 Each nominee received 25 achievement points for their outstanding efforts! See some of the nominated work here...



ON TRACK TO EXCELLENCE

A member of Swale Academies Trust
 Registered Office: Ashdown House, Johnson Road, Sittingbourne, ME10 2JS

Registered in England No. 07344732

THIS WEEK SO FAR...

We're thrilled to announce the opening of our new serving **Pod** in the courtyard for snacks and hot grab and go!

Hours of Operation:
Break 10:30-10:55
Lunch 12:45 – 13:20

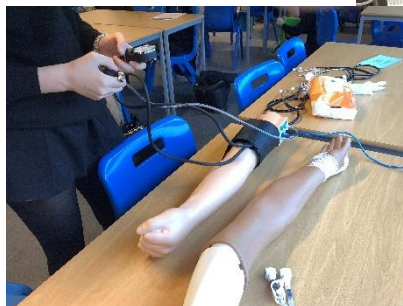
Join us next Monday for a warm cup of hot chocolate!

- Hot chocolate £2.00
- Hot chocolate with marshmallow or cream £2.40
- Hot chocolate with cream and marshmallow £2.80



University Inspires Future Health and Social Care Professionals!

On Thursday Health and Care engagement team from Canterbury Christ Church University visited our health and social care students. They delivered a workshop on the skills that are delivered to health professionals at university. This was a great way of inspiring university progression routes to Health and Social Care students in Year 10 and 11.



Artsmark Gold Award
 Awarded by Arts Council England



ON TRACK TO EXCELLENCE

A member of Swale Academies Trust

Registered Office: Ashdown House, Johnson Road, Sittingbourne, ME10 2JS

Registered in England No. 07344732



Get ready for some CSI action!

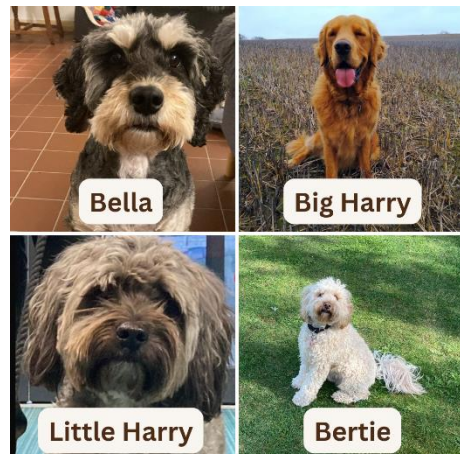
This week, Year 13 Forensic Science students are undertaking a practical assessment as part of their BTEC Applied Science course. This involves processing a mock crime scene, which requires them to identify, collect, and package evidence for subsequent analysis and potential courtroom testimony.

🎃 KS3 Halloween Writing Competition 🎃

We are delighted to announce that with a record amount of submissions to our writing competition last term, Molly in Year 9 won first place with a spine-chilling, spooky short story. A big congratulation to Molly and all other entrants from Years 7-9.

Please do remind students to keep a close eye on our 'Competitions' board in the English department for any upcoming opportunities!

Meet the Cuddle Club Dogs!



Congratulations to Our VEX Robotics Team on Their Impressive Debut!

We are thrilled to share the exciting journey of our school's participation in the first qualifying tournaments in VEX robotics at John Lyon School in Harrow. This adventure has marked not only a series of remarkable accomplishments but also a testament to the talent and dedication of our students.

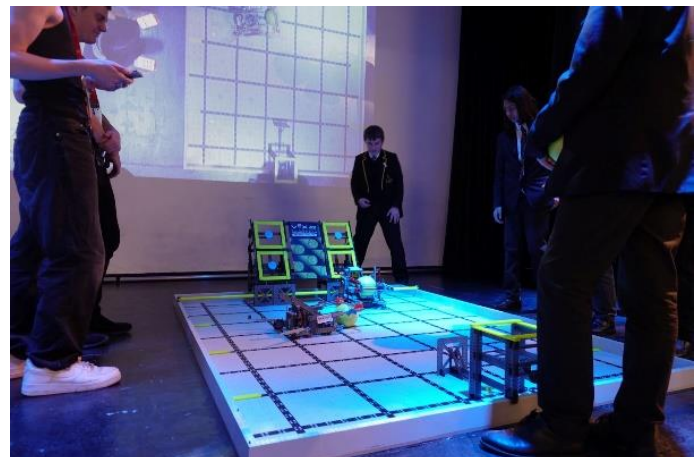
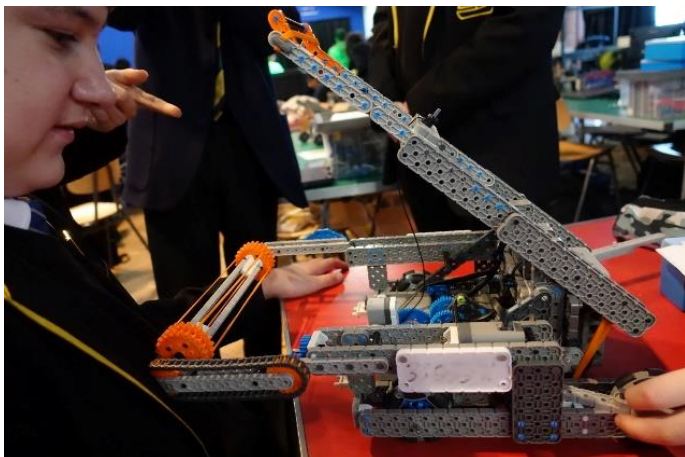
In a field of 24 teams, our students showcased their skills, securing an impressive 10th place, which propelled us into the final tournament rounds. It was here that our team truly shone, advancing to secure an outstanding 5th place in the elimination rounds. This notable achievement in our debut competition is a testament to the hard work and strategic thinking of our students.

Our success continued to resonate as we found ourselves ranked 24th in the UK after our first tournament. Noteworthy victories against The Cotswold Academy, Haberdashers' Girls' School, Haileybury School, and even John Lyon School further emphasised our team's capacity to compete with excellence.

What makes this achievement even more remarkable is that we were the only secondary school from Kent participating that was neither a grammar school nor a private school.

Our students' success underscores the exceptional talent and potential present within our unique educational environment.

As we look forward to upcoming tournaments, we are excited to continue this journey, building on our experiences and striving for even greater heights. We are proud of our students and grateful for the support of our community. If you feel that you may wish to sponsor our VEX robotics team, please get in touch with Mrs Donovan-Bayley.



Artsmark Gold Award
Awarded by Arts Council England



GOLD SCHOOL 2020

ON TRACK TO EXCELLENCE

A member of Swale Academies Trust

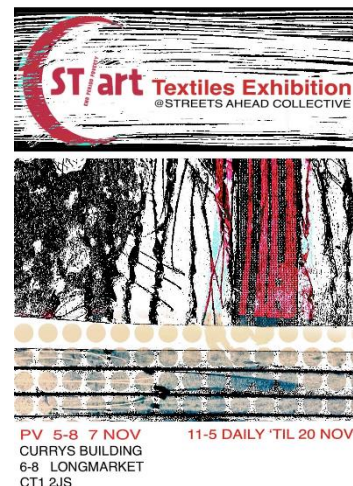
Registered Office: Ashdown House, Johnson Road, Sittingbourne, ME10 2JS

Registered in England No. 07344732

Year 9 Textiles Students' Art Featured in Public Gallery!

Last term, our Year 9 textile work for the ST/Art End Period Poverty Community Art Project featured at the Horsebridge Exhibition and is now featured in an additional exhibition in a public gallery in Canterbury.

This exciting opportunity allows their work to reach a wider audience and showcase their talent to a new community.



Book of Commendation

Great work completed by year 8 regarding the water cycle.

UPCOMING EVENTS

The Childhood Flu Vaccination Programme 2024/25

The Childhood Flu Vaccination Programme 2024/25 is due to take place in November.

The Immunisation Service asks that Parents/Carers go to: www.kentcht.nhs.uk/imms and click on the blue "Child vaccination form" button to complete the consent form.

The consent deadline is **12/11/2024**.

Please click on the links below for more information regarding this from the Immunisation Service.

- [Protecting your child against flu. Information for parents and carers.](#)
- [OV Flu Vaccination Guidance](#)



Artsmark
Gold Award
Awarded by Arts
Council England



ON TRACK TO EXCELLENCE

A member of Swale Academies Trust

Registered Office: Ashdown House, Johnson Road, Sittingbourne, ME10 2JS

Registered in England No. 07344732



🎄 Exciting News 🎄

Our Christmas show is back this year! Expect festive cheer, unforgettable performances and holiday magic. ✨

Tickets can be purchased via [Ticketsource](https://www.ticketsource.co.uk/the-whitstable-school/e-bvaveq)

MacMillan Coffee Morning

We are thrilled to share that we are hosting a Macmillan Coffee Morning on Friday, November 15th!

During break time, students will have the chance to contribute by buying cakes and other baked goodies. It's a wonderful opportunity to take a little break, indulge in some tasty treats, and support an amazing cause. All funds raised will go directly to Macmillan Cancer Support, helping them provide essential services to those affected by cancer.

If you would like to support and give an online donation, please click the link or scan the QR code.

<https://cm24.macmillan.org.uk/fundraising/CM24076336>



Artsmark
Gold Award
Awarded by Arts
Council England



GOLD
SCHOOL
2020

ON TRACK TO EXCELLENCE

A member of Swale Academies Trust

Registered Office: Ashdown House, Johnson Road, Sittingbourne, ME10 2JS

Registered in England No. 07344732



Give a gift this Christmas

As the holiday season approaches, we are dedicated to ensuring that every child experiences the joy of Christmas, especially those in need. To achieve this, we are reaching out to our wonderful parents for support.

We are kindly requesting donations of Christmas gifts that we can distribute to children who may otherwise not receive gifts this year. Any contribution, whether large or small, will bring happiness and a sense of belonging to these children during this festive season.

Your donation can be a new toy, books, clothing, or any other gifts you feel would delight a child. If you would like to participate in this initiative, please drop off the presents at the school office.

NOTICE BOARD

Message about Reward Shop Points

When pupils spend positive points in the reward shop, this will show as a negative labelled 'reward shop'. This is to ensure pupils are spending their positive points to buy rewards and therefore will be deducted from the positives. This is not a behaviour issue, just a deduction in points. Any negative points which have been spent in the shop will show as '- reward shop'.

Young Carers at the Whitstable School

Did you know that The Whitstable School now has a Young Carers Support Group running every Wednesday lunchtime in GZ27?

This group will be run by Mrs James and is open to all Young Carers (registered or non-registered) caring for a family member with; a long term illness, disability, poor mental health or substance misuse.

Whether it is to just sit and listen, talk and share or just be in the company of other young people with caring responsibilities, we are here!



Artsmark
Gold Award
Awarded by Arts
Council England



GOLD
SCHOOL
2020

ON TRACK TO EXCELLENCE

A member of Swale Academies Trust

Registered Office: Ashdown House, Johnson Road, Sittingbourne, ME10 2JS

Registered in England No. 07344732

