

31 JANUARY 2025

NEWSLETTER

Dear families,

It was a fantastic week at The Whitstable School, highlighted by remarkable results from our **Scholars Programme** students and an exceptional performance by our **VEX Robotics** team at the recent qualifying tournament.

Both achievements showcase the dedication and talent of our students. Read on for more school updates.

Key Dates:

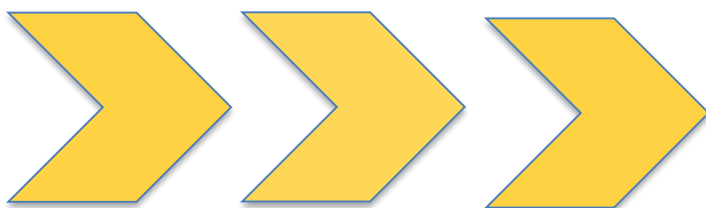
- 05 February 2025 - Parent Forum Year 7, 8 and 9
- 13 February 2025 – Year 10 Parents Evening
- 14 February 2025 – Term 3 Ends
- 24 February 2025- Term 4 Starts

Update

Homework wallets

To help keep offline homework sheets safe and undamaged, we will be providing each student with a homework folder. We kindly ask that you ensure your son or daughter has an appropriate school bag to carry their folder and other school items securely.

Thank you for your support.



NEXT WEEK IS WEEK B TIMETABLE



**Artsmark
Gold Award**
Awarded by Arts
Council England



**GOLD
SCHOOL
2020**

ON TRACK TO EXCELLENCE

A member of Swale Academies Trust

Registered Office: Ashdown House, Johnson Road, Sittingbourne, ME10 2JS

Registered in England No. 07344732

REMINDERS



** Important Notice: Gas Network Upgrade Works & Parking Reminder **

Please be aware that gas network upgrade works are currently underway on **Millstrood Road**, which will last for approximately **12 weeks**.

Important Note: During this period, **there will be no access to Bellevue Road from Millstrood Road.**

To minimize disruption, please plan your child's drop-off and pick-up times in advance, as these works may significantly impact access to the school.

We kindly request that parents park considerately during this time. We have received reports of double parking, which can create safety hazards and obstruct traffic flow.

To ensure the safety of all students and the smooth flow of traffic, we encourage parents to park further away from the school and walk with their child to the school entrance whenever possible.

Thank you for your understanding and cooperation.

** Important Information for Bus 638 Users **

Please note that there will be changes to the **Stagecoach 638** bus service from January 6th.

For full details of these changes, please see the following document: [[Stagecoach 638 service](#)]

This information is important for students and families who rely on this bus route.

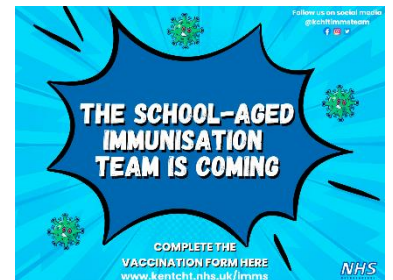
** Important Vaccination Reminder for Year 10 & 11 Parents! **

The Immunisation Service is coming to school soon **on Monday February 3rd and Tuesday 4th 2025** to carry out the TdIPV and MenACWY vaccinations for students in Year 9, as well as a catch up offer to Year 10 & 11 students.

Don't forget to consent or decline before the cut-off date via their website

<https://www.kentcht.nhs.uk/imms>

You can also phone the team on 0300 123 5205, if you have any questions about your child's immunisations.



** Engines Off **

To help reduce air pollution, noise levels, and respect our neighbour's, please remember to turn off your engine while waiting to drop off or pick up your child. Thank you for your cooperation.



Artsmark
Gold Award
Awarded by Arts
Council England



GOLD
SCHOOL
2020

ON TRACK TO EXCELLENCE

A member of Swale Academies Trust

Registered Office: Ashdown House, Johnson Road, Sittingbourne, ME10 2JS

Registered in England No. 07344732

SIXTH FORM UPDATE

** Sixth Form Golf Academy **



**SIXTH FORM
GOLF ACADEMY**

STARTING SEPTEMBER 2025

- » Full membership at the Cave Hotel and Golf
- » Weekly lessons with a coach
- » Weekly supervised practice
- » Weekly Matches

**SIGN UP
NOW**

 twsw_admin@swale.at
F.A.O. - Mr. Lightfoot

 01227931300

 www.thewhitstableschool.org.uk

The Whitstable School **Cave Golf Academy**, offers an exceptional pathway for our KS5 students. Students on this pathway will also need to pick three Level 3 options to study alongside the Golf Academy.

What we offer:

- Expert Guidance: Weekly coaching sessions with a dedicated coach.
- State-of-the-Art Facilities: Access to world-class practice facilities providing ideal conditions for skill development.
- Networking Opportunities: Connect with fellow golfers, make new friends, and enjoy the camaraderie of the sport.
- Access to Competitions.

For more details, please send an email to twsw_admin@swale.at – F.A.O Mr. Lightfoot.

**** Sixth Form Applications Now Open! ****

Interviews for Sixth Form places at The Whitstable School will be taking place throughout **January and February**. All communication regarding applications and interviews will be made via Kent Choices.

If you haven't already, please visit our website for more information.

- View [Prospectus](#)
- View [Sixth Forms Pathways](#)
- View [Why Choose Our Sixth Form](#)
- Apply via [Kent Choices](#)

Want to join our Sixth Form Pathways?

➡ Contact Ms. Simons, Head of Sixth Form.

☎ 01227931300

✉ tws_sixthform@swale.at

We look forward to receiving your application!

**** Congratulations to the TWS Football Academy on their 5-4 win against Kinetic Academy! ****

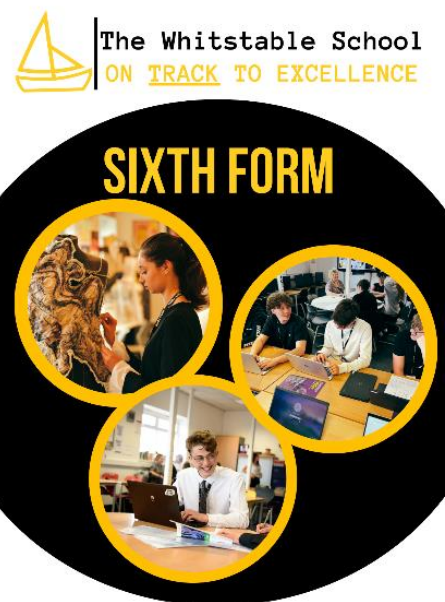
We are pleased to announce that our upcoming scholarship trial for boys and girls will be held on:

Date: Friday, February 21st

Time: 5:30 PM - 7:00 PM

Location: Whitstable Town FC Stadium, Grimshill Road, CT5 4LN

This is a fantastic opportunity for talented young players to showcase their skills and potentially earn a scholarship. We encourage all interested boys and girls to attend.



Artsmark Gold Award
Awarded by Arts Council England



ON TRACK TO EXCELLENCE

A member of Swale Academies Trust

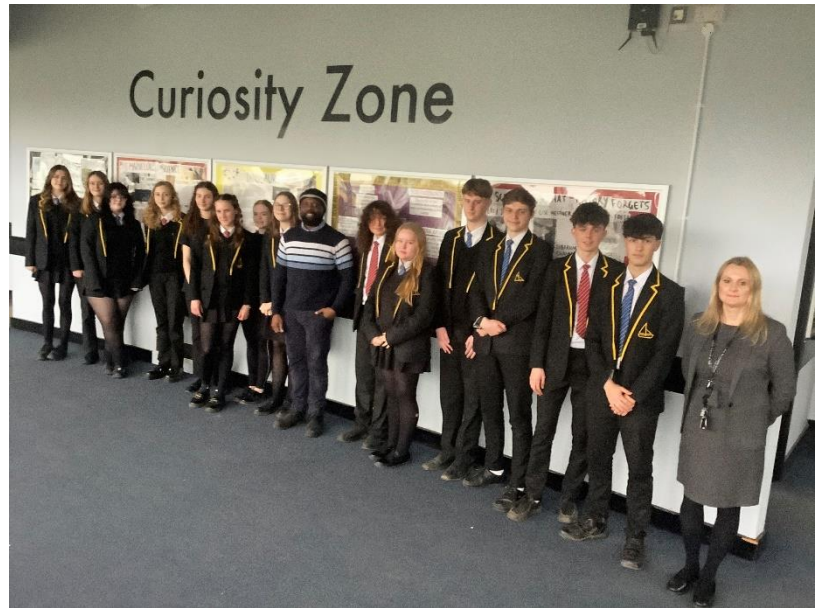
Registered Office: Ashdown House, Johnson Road, Sittingbourne, ME10 2JS

Registered in England No. 07344732

THIS WEEK SO FAR...

** Some huge congratulations to our Scholars! 🎓 **

Some of our KS4 students have demonstrated incredible dedication and academic excellence over the past 7 weeks in **The Brilliant Club's Scholars Programme**. Tackling the complex subject of Game Theory, they completed tutorials, assignments, and a final project, all marked to university standards. We're thrilled to announce that a remarkable **80%** of our students achieved a **First** on their assessments! This is a huge accomplishment and reflects their hard work and commitment. We also want to extend a huge thank you to **Miss Dash** for her dedicated work and for inspiring these students to achieve such fantastic results!

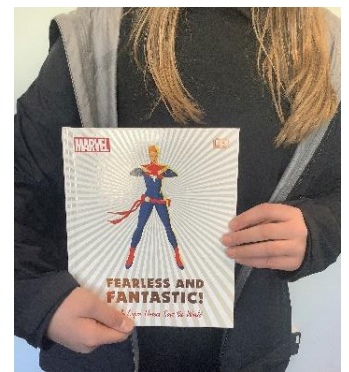


**TRACK Excellence Raffle Winners Announced! **

Each Wednesday, the school will run a **'TRACK Excellence'** raffle with two prizes for students. To enter, students just have to have seven or more positive signatures over the two weeks. Students with negative signatures are still able to participate.

This week's winners are:

Florence (Year 9) and Grace (Year 7)



Students with their prizes in the TRACK Excellence raffle.

Are You on TRACK?



Artsmark
Gold Award
Awarded by Arts
Council England



GOLD SCHOOL 2020

ON TRACK TO EXCELLENCE

A member of Swale Academies Trust

Registered Office: Ashdown House, Johnson Road, Sittingbourne, ME10 2JS

Registered in England No. 07344732

**** Whimech VEX Robotics Team Shines at Canterbury Tournament ****

We are thrilled to announce the exceptional performance of our school's VEX Robotics team at the recent qualifying tournament held at Simon Langton Grammar School in Canterbury.

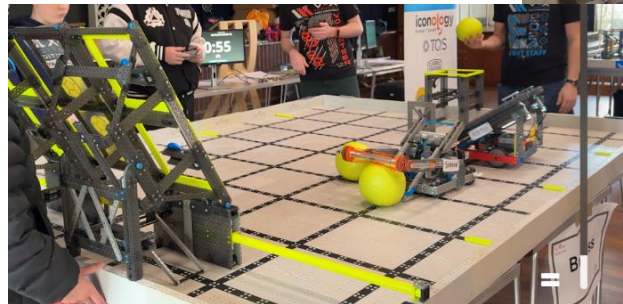
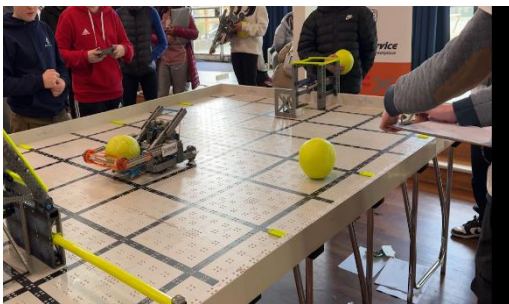
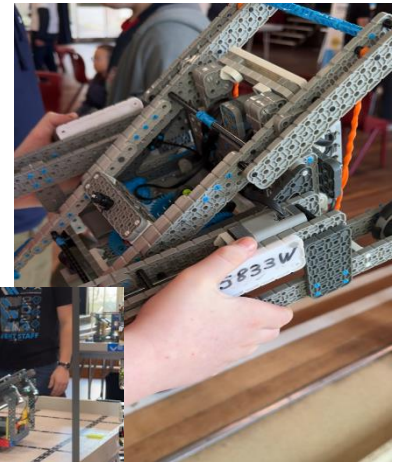
Competing against strong teams from independent and grammar schools, including Orley Farm School, Merchant Taylors' School, John Lyon, Beechwood Park School, Henrietta Barnett School, and Simon Langton Grammar, our team, the only comprehensive school in the tournament, demonstrated remarkable teamwork and perseverance.

Highlights include:

- **Successful Alliance:** We formed a successful alliance with teams from Hertfordshire, Watford, London and Beijing, fostering valuable collaborations.
- **Industry Recognition:** A Lecturer in Computing at Kent University was impressed by our team's performance and expressed interest in collaborating with us to further enhance our robotic skills.
- **Top Finish:** We secured a commendable fifth-place finish in the finals out of 24 teams, propelling us to 40th place in the UK rankings. This positions us well for a potential spot in the national tournament.

We are immensely proud of our students' dedication and hard work taking. Their success is a testament to their ingenuity, problem-solving skills, and unwavering commitment to excellence.

We extend our sincere gratitude to our community for their continued support. If you are interested in contributing to the ongoing success of our VEX Robotics team, please contact Mrs. Donovan-Bayley to explore opportunities.



Artsmark Gold Award
Awarded by Arts Council England



ON TRACK TO EXCELLENCE

A member of Swale Academies Trust

Registered Office: Ashdown House, Johnson Road, Sittingbourne, ME10 2JS

Registered in England No. 07344732

**** Celebrating Chinese New Year! 🐍 ****

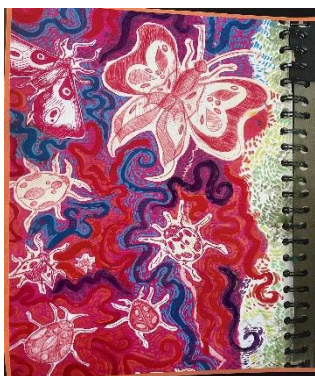
Our students enjoyed a special menu on Wednesday celebrating the Year of the Snake. 🐍

On Thursday 13th February, the restaurant will be serving fish and chips as they have a special Valentine's Day theme menu on Friday 14th. ❤️



**** Artist of the Month ****

Huge congratulations to all the talented students featured in this month's "Artist of the Month" display! So much incredible work, well done.



Artsmark Gold Award
Awarded by Arts Council England



ON TRACK TO EXCELLENCE

A member of Swale Academies Trust

Registered Office: Ashdown House, Johnson Road, Sittingbourne, ME10 2JS

Registered in England No. 07344732

** Year 7 Student Runner Opportunity! **



We're excited to announce a fantastic opportunity for our Year 7 students! Throughout the remainder of the school year, students can participate in the Student Runner program on an occasional basis during Periods 1, 4, and 5. As Student Runners, they'll work alongside our attendance team, assisting with tasks and errands. This is a fantastic way for students to develop responsibility, contribute to the school community, and learn about how our school operates. All Year 7 students are considered for this program. However, if you do not wish for your child to participate, please send an email to tws_admin@swale.at by **Friday, January 31st**.

** Exciting News: Basketball Super League Playoff Finals Tickets Available **

Mr. Lightfoot has secured 40 tickets for the thrilling Super League Playoff Finals at The O2 Arena on Sunday, May 18th. This all-day event will feature both the women's and men's finals.

Tickets are priced at £50 per person.

Don't miss out!

Sign up now to secure your place: [Basketball sign up](#)



** Donate to Year 8 Art! **



The Visual Arts Department would be grateful for donations of unwanted newspapers and balls of wool/yarn for the Year 8 weaving project. Any donations, big or small, are greatly appreciated! Students can bring the donations to Miss Butler in the Art Office in upper creative.



**Artsmark
Gold Award**
Awarded by Arts
Council England



**GOLD
SCHOOL
2020**

ON TRACK TO EXCELLENCE

A member of Swale Academies Trust

Registered Office: Ashdown House, Johnson Road, Sittingbourne, ME10 2JS

Registered in England No. 07344732

UPCOMING EVENTS

** PARENT FORUM **

Year 7, 8 & 9 Parent Forum: 5th Feb, 5:00 PM.

Registration is compulsory for attendance. Please fill in the registration form by clicking on the link below:

[Parent Forum Registration Form](#)

Information for upcoming Parent Forums for Year 10, 11 and 12 will follow.

** Important Work Experience Dates for Year 10 **



Week of: June 30th - July 4th, 2025 (5 days)

Work experience is a valuable opportunity for you to:

- Gain exposure to the professional world and explore different career paths.
- Develop essential skills desired by employers, such as communication, teamwork, and problem-solving.
- Boost your confidence and build your personal and social skills.

Finding Your Placement:

You are responsible for finding your own work experience placement. This allows you to explore your interests and connect with potential career fields. We will be providing support through Unifrog, a platform that helps you track and manage your placement search.

Have Questions?

If you have any further questions about work experience, please don't hesitate to contact:

- Email: tw_s-workexperience@swale.at



**Artsmark
Gold Award**
Awarded by Arts
Council England



**GOLD
SCHOOL
2020**

ON TRACK TO EXCELLENCE

A member of Swale Academies Trust

Registered Office: Ashdown House, Johnson Road, Sittingbourne, ME10 2JS

Registered in England No. 07344732

**** Calling all local businesses! ****

Join The Whitstable School **Careers Fair on March 13th, 2025.**

The aim of the fair is to provide students with valuable career guidance through engaging discussions with local employers.

Last year's event was a huge success, and we're aiming even higher this year!

Contact tws_admin@swale.at or 01227 931300 to participate.




Careers Fair
Date 13th March 2025
Time 9:00-2:30pm

We would like to invite you to our Careers Fair 2025!!

Aims of the event:

- To engage the students through interactive displays and discussions
- To provide the students with information about different career paths
- To inform the students about a range of new careers and industries

For further information on how to get a stand at our event please contact us on 01227 931300 or tws_careers@swale.at




Artsmark Gold Award
Awarded by Arts Council England



ON TRACK TO EXCELLENCE

A member of Swale Academies Trust

Registered Office: Ashdown House, Johnson Road, Sittingbourne, ME10 2JS

Registered in England No. 07344732

****Celebrate Our Amazing Staff! Nominate a Teacher of the Year! ****

A big thank you to the parents who have already nominated some of our staff for the Kent Teacher of the Year Awards. Your comments are so kind! If you wish to nominate a member of staff, there is still time to do so:

[Kent Teacher of the Year Nomination form](#)

Remember there are lots of different categories across all staff groups! Thank you for your support with this.

Nominations close February 28th, 2025!



****Calling Young Artists! ****

This free exhibition showcases the incredible talent of young artists aged 4-18 across the UK. Want to participate?



- **Students:** Speak to Miss Butler to learn how to submit your artwork through the school.
 - **Teachers & Parents/Guardians:** You can also submit artwork on behalf of students.
- A panel of esteemed artists and arts professionals will judge the submissions. Selected artworks will be displayed both online and at the prestigious Royal Academy of Arts.
- Don't miss this exciting opportunity!**
Submission Deadline: March 5th, 2025



Artsmark Gold Award
 Awarded by Arts Council England



GOLD SCHOOL 2020

ON TRACK TO EXCELLENCE

A member of Swale Academies Trust

Registered Office: Ashdown House, Johnson Road, Sittingbourne, ME10 2JS

Registered in England No. 07344732

NOTICE BOARD



10 Top Tips for Parents and Educators SUPPORTING CHILDREN TO DEVELOP EMOTIONAL LITERACY

Emotional literacy refers to the ability to recognise, understand and express our feelings effectively. It plays a crucial role in strengthening a child's wellbeing by enhancing their relationships and resilience. However, emotional literacy is not necessarily an innate talent, and its development may present challenges. This guide gives parents and educators practical tips on supporting children to cultivate this essential skill.

- 1 NAME THE EMOTION**
Encourage children to identify and name their emotions. This helps them understand what they're feeling and why. Use simple words and relate them to situations they can easily understand. This builds a foundation for emotional understanding and open communication.
- 2 MODEL EMOTIONAL EXPRESSION**
Demonstrate healthy emotional expression by sharing your feelings openly. When children see adults properly expressing how they're doing and what they're feeling, they learn to do the same. Discuss how you handle emotions in different circumstances, providing a positive framework for young ones to follow.
- 3 MINDFULNESS ACTIVITIES**
Teach children mindfulness practices to help them stay present and manage their emotions. Simple breathing exercises, body scans, and mindful eating can reduce stress and enhance emotional regulation. Regular practice can improve focus and emotional stability, which can significantly help children better manage growing up and throughout their adult life.
- 4 USE STORYTELLING**
Incorporate storytelling to help children understand emotions. Books, stories, and relevant scenarios illustrating how the characters experience and manage their feelings. Discuss the emotions depicted in stories and ask children how they might feel in similar situations.
- 5 PRACTISE EMPATHY**
Teach children to consider others' views and emotions. Encourage them to imagine how others might feel in various situations. Role-playing and discussing different perspectives can help them develop empathy. Understanding others' emotions helps children in developing compassion and improves their social interactions.
- 6 ENCOURAGE JOURNALING**
Suggest keeping a journal to make notes of thoughts and emotions, as writing can provide an outlet for self-reflection and emotional processing. Encourage children to write about their daily experiences and feelings, helping them gain insight into their emotional world. Use this as a safe space for them to express and experience how to do it effectively.
- 7 TEACH PROBLEM-SOLVING**
Do what you can to help children develop problem-solving skills to avoid overwhelming situations to avoid later conflicts and encourage them to think critically about what they (and others) can do to process their feelings in healthy ways. This empowers children to handle emotional problems and build resilience.
- 8 CREATE A SAFE SPACE**
Establish an environment where children feel safe to express their emotions and seek help. Encourage open communication and judgment-free listening. Use these tools regularly in your interactions. They provide a visual representation of emotions, making it easier for children to communicate their emotional state.
- 9 USE VISUAL AIDS**
Take advantage of visual aids like emotion charts or mood meters to help children identify and express their feelings. Use these tools regularly in your interactions. They provide a visual representation of emotions, making it easier for children to communicate their emotional state.
- 10 CELEBRATE EMOTIONAL GROWTH**
Acknowledge and celebrate progress in emotional literacy. Praise children for identifying and expressing their emotions and handling emotional challenges. Positive reinforcement is a useful tool that can encourage continued growth and resilience. The importance of emotional literacy – encouraging young people to maintain the good habits and healthy behaviours that you've taught them.

Meet Our Expert
Adam Elliott is Associate Vice-Principal for Personal Development at Parklands Secondary School and has an accreditation as a coach for Minds Ahead, an organisation that supports schools in improving their mental health provision.

Wake Up Wednesday
The National College

Follow us on social media: [@wake_up_weds](https://www.facebook.com/wake_up_weds), [/www.thenationalcollege](https://www.facebook.com/wake_up_weds), [@wake_up_wednesday](https://www.facebook.com/wake_up_weds), [@wake_up_weds](https://www.facebook.com/wake_up_weds)



Swale ACADEMIES TRUST

Ever thought about volunteering as a school governor?

Want to know more?
Scan the QR code to check out our website now!



We believe that effective governance is best delivered when school leaders are held to account and challenged on pupil outcomes as well as the quality of education provided.

You do not need to be from an education background - we value what people from outside the sector can offer!

Now considering becoming a school governor? Get in touch!
We'd love to hear from you.

hello@swale.at
01795 905989

For more updates and events, please visit our website and follow us on X and Facebook.

- <https://www.thewhitstableschool.org.uk/>
- <https://www.facebook.com/TheWhitstableSchool>
- <https://x.com/TheWhitSchool>

Best Wishes
The Whitstable School Team



Artsmark Gold Award
Awarded by Arts Council England



ON TRACK TO EXCELLENCE

A member of Swale Academies Trust

Registered Office: Ashdown House, Johnson Road, Sittingbourne, ME10 2JS

Registered in England No. 07344732