

21 MARCH 2025

# NEWSLETTER

Dear Families,

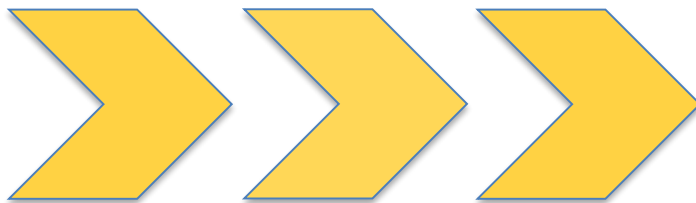
This week, students raised funds for Comic Relief through the Stage Academy's performances, while many also earned commendations for their outstanding work. Read on for all the exciting details!

## Key Dates:

- 27 March 2025 - Year 7 Parents Evening
- 04 April 2025 - Term 4 Ends
- 22 April 2025 - Term 5 Starts

## Update

### Key Date for KS4 Options



## NEXT WEEK IS WEEK B TIMETABLE



**Artsmark  
Gold Award**  
Awarded by Arts  
Council England



**GOLD  
SCHOOL  
2020**

**ON TRACK TO EXCELLENCE**

**A member of Swale Academies Trust**

Registered Office: Ashdown House, Johnson Road, Sittingbourne, ME10 2JS

Registered in England No. 07344732

## REMINDERS

### \*\* Respecting Accessible Parking Spaces \*\*

We kindly remind all parents and visitors to respect our designated accessible parking spaces. These spaces are reserved for individuals with disabilities who require close proximity to the school entrance.

Please remember:

- **Not all disabilities are visible.** Some individuals may have valid permits that are not always displayed.
- **Permits must be displayed.** If you have a valid permit, please ensure it is clearly visible in your vehicle's windscreen.
- **Cooperation is key.** We rely on everyone's cooperation to ensure these spaces are available for those who need them.

We understand that parking can be challenging, but we ask that you be considerate of others and refrain from parking in accessible spaces unless you have a valid permit.

Thank you for your understanding and cooperation in making our school accessible for everyone.

### \*\* Engines Off \*\*

To help reduce air pollution, noise levels, and respect our neighbour's, please remember to turn off your engine while waiting to drop off or pick up your child. Thank you for your cooperation.

## SIXTH FORM UPDATE

Applications for our Sixth Form Football Academy are still being accepted.

- View [Prospectus](#)
- View [Sixth Forms Pathways](#)

Want to join our Sixth Form Pathways?

✉ Contact Ms. Simons, Head of Sixth Form.

☎ 01227931300

✉ tws\_sixthform@swale.at



The Whitstable School  
ON TRACK TO EXCELLENCE



Artsmark  
Gold Award  
Awarded by Arts  
Council England



GOLD  
SCHOOL  
2020

ON TRACK TO EXCELLENCE

**A member of Swale Academies Trust**

Registered Office: Ashdown House, Johnson Road, Sittingbourne, ME10 2JS

Registered in England No. 07344732

**THIS WEEK SO FAR...**

**\*\*TRACK Excellence Raffle Winners Announced! \*\***

Each Wednesday, the school will run a 'TRACK Excellence' raffle with two prizes for students. To enter, students just have to have seven or more positive signatures over the two weeks. Students with negative signatures are still able to participate.

This week's winners are:

**Thea (Year 9) and Elkie (Year 7)**

We've teamed up with local businesses for amazing rewards.

This week's prize is vouchers for local book shop **Tales on Moon Lane**.

Students with their prizes in the TRACK Excellence raffle.



**\*\* Book of Commendation- Celebrating Student Success! \*\***

We are pleased to announce the following students have been recognised for their exceptional work and have been added to the Book of Commendation:

- **Rudy and Tommy (Year 9):** Explored landscape art through the style of Hokusai.
- **Flo (Year 8):** Art work on feminism.
- **Holly, Georgina, and Jonny (Year 9):** Collaborated on collages based around abstract patterns.
- **Lucy and Isaac (Year 8):** Collaborated on nature-themed artwork.
- **Sophia and Amy (Year 9):** Explored the mono print technique in their art projects.
- **Isla and Charlie (Year 7):** Explored the history of the Black Death, examining its causes, effects and attempts at prevention.

Congratulations to all our commended students!



Artsmark  
Gold Award  
Awarded by Arts  
Council England



**ON TRACK TO EXCELLENCE**

**A member of Swale Academies Trust**

Registered Office: Ashdown House, Johnson Road, Sittingbourne, ME10 2JS

Registered in England No. 07344732





# The Whitstable School

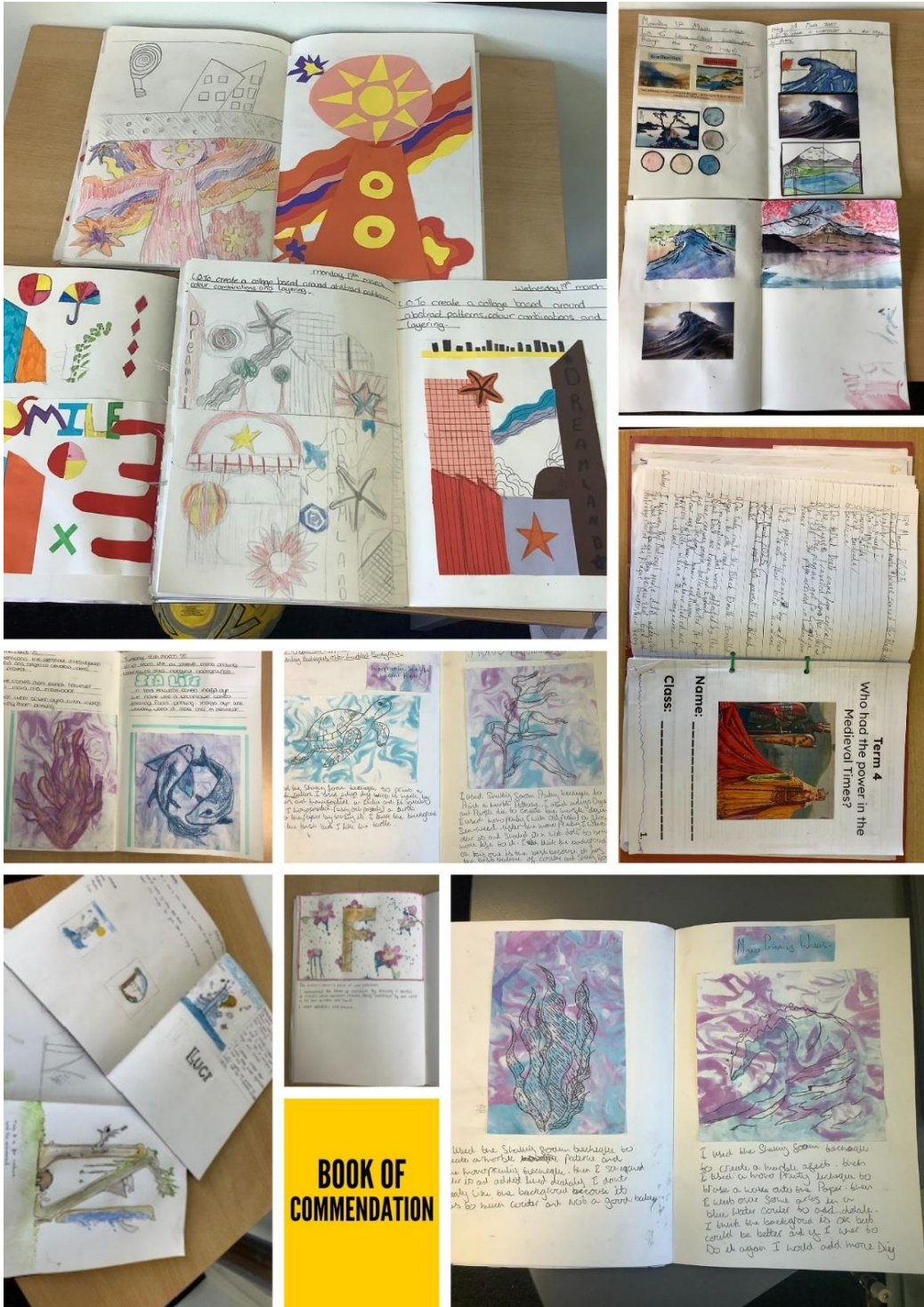
Bellevue Road | Whitstable | Kent | CT5 1PX

T: 01227 931300

E: tws\_admin@swale.at

www.thewhitstableschool.org.uk

Headteacher: Mr A Holmes BA (Hons), MA, NPQH



Artsmark  
Gold Award  
Awarded by Arts  
Council England



ON TRACK TO EXCELLENCE

A member of Swale Academies Trust

Registered Office: Ashdown House, Johnson Road, Sittingbourne, ME10 2JS

Registered in England No. 07344732



**\*\* Chatham Dockyards \*\***

Last week's trip to Chatham Dockyards was a resounding success! Students enjoyed a wonderful and educational day, exploring the historical dockyards and learning about maritime heritage. We are incredibly grateful to the staff who worked tirelessly to plan and execute this fantastic trip, ensuring a memorable experience for all.



**Artsmark Gold Award**  
Awarded by Arts Council England



**GOLD SCHOOL 2020**

**ON TRACK TO EXCELLENCE**

**A member of Swale Academies Trust**

Registered Office: Ashdown House, Johnson Road, Sittingbourne, ME10 2JS

Registered in England No. 07344732

## \*\* Stage Academy Raises Funds for Comic Relief \*\*

This week, The Stage Academy raised over £250 for Comic Relief with a fantastic range of events! We enjoyed dance and improv performances on Wednesday, followed by a lively staff vs. students karaoke party. A huge thank you to everyone involved!



## \*\* Safeguarding: Mental Health Support \*\*

Young Minds is a leading mental health charity dedicated to supporting children and young people. Their website offers a comprehensive Parents A-Z mental health guide, providing a wealth of support, resources and information for parents and carers.

If you have concerns about your child's mental health, we recommend speaking with your GP as a first step. In situations where you believe your child is in immediate danger, please contact the Crisis Team at QE/QM Hospital without delay.

### Useful Links and Resources:

- **Young Minds Main Website:** <https://www.youngminds.org.uk/>
- **Parents A-Z Guide:** <https://www.youngminds.org.uk/parent/parents-a-z-mental-health-guide/>
- **Exam Self-Care Support:** <https://www.youngminds.org.uk/young-person/coping-with-life/self-care>

# YOUNG MINDS

fighting for young people's mental health



Artsmark  
Gold Award  
Awarded by Arts  
Council England



GOLD  
SCHOOL  
2020

ON TRACK TO EXCELLENCE

**A member of Swale Academies Trust**

Registered Office: Ashdown House, Johnson Road, Sittingbourne, ME10 2JS

Registered in England No. 07344732

## UPCOMING EVENTS

Week of: June 30th - July 4th, 2025 (5 days)



**Work experience is a valuable opportunity for you to:**

- Gain exposure to the professional world and explore different career paths.
- Develop essential skills desired by employers, such as communication, teamwork, and problem-solving.
- Boost your confidence and build your personal and social skills.

### Finding Your Placement:

You are responsible for finding your own work experience placement. This allows you to explore your interests and connect with potential career fields. We will be providing support through Unifrog, a platform that helps you track and manage your placement search.

### Have Questions?

If you have any further questions about work experience, please don't hesitate to contact:

- Email: [tw\\_s-workexperience@swale.at](mailto:tw_s-workexperience@swale.at)

**We thank you in advance for any opportunities you are able to provide.**



Are you able to support a Year 10 or 12 student develop valuable employability skills?  
We are seeking work experience placements for our students during the week of **Monday 30th June to Friday 4th July 2025.**

We manage our Work Experience program through Unifrog, which handles all the necessary administration, including risk assessments, health and safety policies, and parental/carer consent.  
If you can offer a placement during this week, we would be incredibly grateful.

Please complete the short form to express your interest or scan the QR code:

Form: [Work Experience Placement Form](#)

Alternatively, you can contact us directly at: [tw\\_s-workexperience@swale.at](mailto:tw_s-workexperience@swale.at)



Artsmark  
Gold Award  
Awarded by Arts  
Council England



GOLD  
SCHOOL  
2020

ON TRACK TO EXCELLENCE

**A member of Swale Academies Trust**

Registered Office: Ashdown House, Johnson Road, Sittingbourne, ME10 2JS

Registered in England No. 07344732



## NOTICE BOARD

### \*\* Emotional Wellbeing/Support Workshops (Feb-Mar 2025) \*\*

Boost your family's emotional wellbeing! We've got a fantastic line-up of workshops designed to support parents and children. Check out the links to the posters for more information and registration details:

- [Less Stress Guide in Exams](#)
- [Understanding ADHD](#)
- [All online workshops](#)



EMOTIONAL WELLBEING TEAM KENT  
EMOTIONAL SUPPORT TEAM  
MEDWAY

### \*\* Cucina Restaurant Updates \*\*

- Thursday, April 3rd, Fish, sausage, pizza and chips will be served.
- Monday, March 31st: Eid menu available.
- Easter cakes and treats will be served starting Monday, March 24th (changed from March 31st).





We are excited to support **Red Nose Day** and encourage our community to join us in making a difference. If you would like to donate and contribute to this wonderful cause, please follow the link provided: [Donations comic relief](#)



## PERFORMING ARTS WEEK

**WEDNESDAY 19th MARCH PS&G**  
**Performing Arts Sharing** COMEDY IMPROVISATION PERFORMANCE/DANCE PERFORMANCES

**FRIDAY 21st MARCH PS&G**  
**Karaoke Party!** TAKE ON TEACHERS AND FELLOW STUDENTS IN A SINGING BATTLE. PRIZES FOR BEST AND WORST

YOU CAN JOIN IN EITHER OF THE EVENTS ABOVE IN EXCHANGE FOR A DONATION TO COMIC RELIEF. DETAILS TO FOLLOW ON PARENT PAY



**\*\* Timetable & Family Hub Information \*\***

"Timetable information and details about our local Kent Family Hub can be found here: [Kent Family Hub](#)



STAGE COACH  
 Stagecoach Performing Arts Whitstable and Faversham

## EASTER WORKSHOP

THE WONDERFUL LAND OF **OZ**

Venture to the land of Oz in a three-day fun filled performing arts workshop  
 singing - dancing - acting

**WHEN?** 7th/8th/9th April  
**WHERE?** Swalecliffe Community Primary School  
**WHO?** Children aged 5-18



Artsmark Gold Award  
 Awarded by Arts Council England




**ON TRACK TO EXCELLENCE**


**A member of Swale Academies Trust**

Registered Office: Ashdown House, Johnson Road, Sittingbourne, ME10 2JS

Registered in England No. 07344732

Coming soon: 

# SwaleDanceFever



**2025**

Talent. Tenacity. Timing.  
Let's go, dancers!

27.03.25  
Hosted at: The Turing School

Swale  
ACADEMIES  
TRUST

- 8 secondary schools
- 8 unique performances
- 125 talented dancers

Let's go, dancers!  
All eyes are on you.

*"I'm so proud to have been part of the performance that won Best Moment. We worked hard as a team to pull off the group lifts and that award just makes the experience even more special!" - Serena from The Turing School, SwaleDanceFever 2024*

Swale  
ACADEMIES  
TRUST



**Artsmark  
Gold Award**  
Awarded by Arts  
Council England



**GOLD  
SCHOOL  
2020**

**ON TRACK TO EXCELLENCE**

**A member of Swale Academies Trust**

Registered Office: Ashdown House, Johnson Road, Sittingbourne, ME10 2JS

Registered in England No. 07344732



At The National College, our **WokeUpWednesday** guides empower and equip parents, carers and educators with the confidence and practical skills to be able to have informed and age-appropriate conversations with children about online safety, mental health and wellbeing, and Climate Change. Formerly delivered by National Online Safety, these guides now address wider topics and themes. For further guides, hints and tips, please visit [nationalcollege.com](http://nationalcollege.com).

## What Parents & Educators Need to Know about STREAMERS

Livestreaming has become a big part of the entertainment people consume, and what began as a series of gamers sharing their screens has grown into a huge industry packed with personalities - and potential risks for your children. With over 2.5 million people watching Twitch, the most popular streaming service, at any one time, it's important to remain aware of the risks associated with streamers.

**WHAT ARE THE RISKS?**

- INAPPROPRIATE CONTENT** (AGES 18): Some gaming streamers will stick to family-friendly titles, but others will play more violent games that tend to be more popular. Non-gaming streamers could, in theory, discuss just about anything, and some streamers will often stream in revealing outfits.
- NEGATIVE INFLUENCES**: While things have improved, streamers are often paid by companies to promote products, and this isn't always stated explicitly. Whilst it's unlikely these goods will be harmful to your child, some streamers and influencers have engaged (knowingly or not) in scams in the past.
- FINANCIAL HARM**: Streamers will often have donation buttons on their screens for users to submit money, which can start as small amounts but quickly spiral as streamers engage with paying viewers from often, potentially leading to financial issues.
- UNREALISTIC EXPECTATIONS**: Influencers often showcase how glamorous their lives are, making some users feel as though they are lesser. However, it's important to stress that, in many ways, this is an act, or at the very least, not someone's 'real' life, who has been successful as a streamer and influencer, has a net worth of \$5 million, but this is atypical of anyone working in the medium.
- MISINFORMATION**: Streamers are, in many ways, just like us - and they can get things wrong or read out an opinion without having thought about it. Some can simply say awful things to get attention of viewers or to sway them to their side of a hot topic.
- ADDITION AND SCREEN TIME**: If your child is watching a lot of a particular streamer, it can be just as addictive to their social life as playing too many video games.

**Advice for Parents & Educators**

- EXPLAIN HOW STREAMING WORKS**: For a younger viewer, being a streamer or influencer seems aspirational, but it involves a lot of work and has small degrees of good fortune. Streamers are often managed and unable to speak freely due to sponsors, and influencers are just that - influencing young minds, for better or for worse.
- CHECK OUT STREAMING PLATFORMS**: While Twitch was the de facto streaming service for years, YouTube has gained popularity. Also, there are Kick and Rumble, which have grown in popularity with moves for big-name streamers - despite many being flagged by controversy.
- DO NOT LOG PAYMENT INFORMATION**: Streamers can reward donations with additional content, on-camera 'thank you's and more. If you are a social user or when your child is watching, consider avoiding linking payment information. This is especially notable with Twitch, which is owned by Amazon and therefore has some crossover.
- SET SCREEN TIME LIMITS**: You can set screentime limits for mobile apps on iOS and Google, but with other platforms like Twitch it may be more difficult to keep tabs. Consider checking in regularly to ensure your children aren't watching content they shouldn't be.

**Meet Our Expert**  
Lloyd Coombes is the Games Editor of the Daily Star, and has been working in the gaming and tech industry for five years. A regular visitor to the App Store by and new tools, he's a keen parent and therefore understands the importance of online safety. He's also a tech and fitness writer and has been published at sites including iFixit, Techradar and Penny Press.

Source: See full reference list on guide page at <http://nationalcollege.com/guides/streamers>

© @wake\_up\_weds | www.thenationalcollege | @wake.up.wednesday | @wake.up.weds

Users of this guide do so at their own discretion. No liability is entered into. Current as of the date of release: 18.03.2025

fundraising event for  
Community Clothes Bank

# Spring Vintage & Preloved Clothing Pop up Sale

Womens, Mens and Childrenswear

9am - 12pm  
Sunday 23rd March 2025

Card and cash accepted

at Whitstable Umbrella  
Community Centre,  
10 Oxford Street, CT5 1DD

For more info please find us on facebook &  
instagram - @communityclothesbank  
[www.communityclothesbank.org.uk](http://www.communityclothesbank.org.uk)



For more updates and events, please visit our website and follow us on X and Facebook.

<https://www.thewhitstableschool.org.uk/>  
<https://www.facebook.com/TheWhitstableSchool>  
<https://x.com/TheWhitSchool>

Best Wishes  
The Whitstable School Team



Artsmark  
Gold Award  
Awarded by Arts  
Council England



GOLD  
SCHOOL  
2020

ON TRACK TO EXCELLENCE

A member of Swale Academies Trust

Registered Office: Ashdown House, Johnson Road, Sittingbourne, ME10 2JS

Registered in England No. 07344732