

25 APRIL 2025

NEWSLETTER

Dear Families,

We hope you all had a wonderful break! We're thrilled to be starting Term 5 with some fantastic work already added to our Book of Commendation this week, alongside more exciting events coming up. Read on for all the details!

Key Dates:

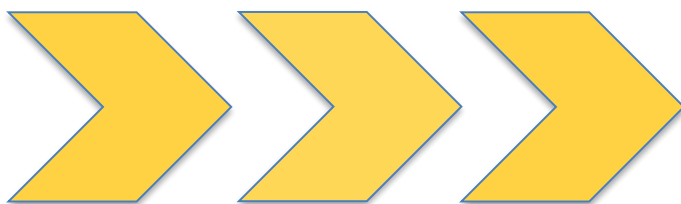
- 30 April 2025- In- School vaccinations
- 01 May 2025- In-School vaccinations
- 23 May 2025- Term 5 Ends

Update

TWS Extra-Curricular Clubs

The new timetable for Term 5 Extra-Curricular clubs has now been updated and can be found on our website.

[Extra-Curricular Activities](#)



NEXT WEEK IS
WEEK A
TIMETABLE



**Artsmark
Gold Award**
Awarded by Arts
Council England



**GOLD
SCHOOL
2020**

ON TRACK TO EXCELLENCE

A member of Swale Academies Trust

Registered Office: Ashdown House, Johnson Road, Sittingbourne, ME10 2JS

Registered in England No. 07344732

Dear Parents and Carers,

Welcome back to Term 5. We hope you had a restful and enjoyable Easter break. As we move into the final two terms of the academic year, our focus remains firmly on providing high-quality, inclusive learning experiences for all our students. This term, we will be placing particular emphasis on the use of paired and group work within lessons to develop communication and collaboration skills, alongside inclusive questioning and engaging activities that activate students' prior knowledge.

We're excited to continue building on our achievement points and rewards system, recognising and celebrating the fantastic effort and progress our students are making across the curriculum. Planning is also underway for end-of-year trips and enrichment activities as a celebration of students' academic achievements and contributions to school life.

A key priority this term is supporting our Year 10, Year 11 and Sixth Form students as they enter a critical stage of their educational journey. With exams fast approaching, we would like to remind families of the importance of consistent revision, preparation, and maintaining routines that support focus and wellbeing during this time.

Thank you, as always, for your ongoing support. It is greatly appreciated and continues to make a real difference to the experiences and success of our young people.

Mr A. Holmes
Headteacher

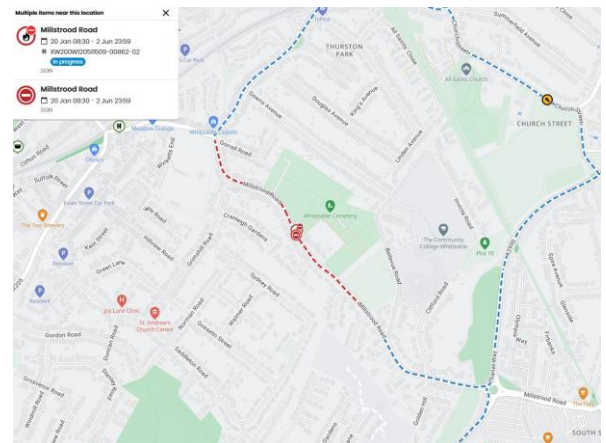
**** Important Notice ****

Please be aware that the gas network upgrade works affecting Bellevue Road and Millstrood Road have now been extended until Monday, **2nd of June 2025**.

This extension will continue to impact access to the school during drop-off and pick-up times. To help minimize any disruption to your journeys, we strongly advise you to plan your child's drop-off and pick-up times in advance during this period.

For more information, please visit our [website](#)

Thank you for your understanding and cooperation as these essential works continue.



REMINDERS

** Respecting Accessible Parking Spaces **

We kindly remind all parents and visitors to respect our designated accessible parking spaces. These spaces are reserved for individuals with disabilities who require close proximity to the school entrance.

Please remember:

- **Not all disabilities are visible.** Some individuals may have valid permits that are not always displayed.
- **Permits must be displayed.** If you have a valid permit, please ensure it is clearly visible in your vehicle's windscreen.
- **Cooperation is key.** We rely on everyone's cooperation to ensure these spaces are available for those who need them.

We understand that parking can be challenging, but we ask that you be considerate of others and refrain from parking in accessible spaces unless you have a valid permit.

Thank you for your understanding and cooperation in making our school accessible for everyone.

** Engines Off **

To help reduce air pollution, noise levels, and respect our neighbour's, please remember to turn off your engine while waiting to drop off or pick up your child. Thank you for your cooperation.

SIXTH FORM UPDATE

** Football Academy Update **

Our team put in a strong performance on Wednesday against a high-ranking Tonbridge Angels Academy, currently 3rd in their league, with the final score at 5-3. This was a valuable showing of our player's commitment and skill.

Looking ahead, we are excited to announce our entry into the academies club at the end of the season, joining esteemed teams like Ebbsfleet United, Chatham and Tonbridge.

Furthermore, pre-season training for our new scholarship players will commence in July, building a bright future for the club. Incredibly, **Whitstable Town FC's** first team has reached the **FA Vase final at Wembley on Sunday, May 11th**, a monumental achievement! We're especially proud that some of our talented scholarship players will be part of the squad for this amazing experience.



FOOTBALL FUTURE'S
SUPPORT WHERE YOU NEED IT MOST



Artsmark
Gold Award
Awarded by Arts
Council England



**GOLD
SCHOOL
2020**

ON TRACK TO EXCELLENCE

A member of Swale Academies Trust

Registered Office: Ashdown House, Johnson Road, Sittingbourne, ME10 2JS

Registered in England No. 07344732

In other news, **The Whitstable School Sixth Form** is still accepting applications for **September!**

Don't miss the chance to explore our diverse curriculum and innovative sports pathways. Visit **Kent Choices** to view our offerings and apply – we only accept applications through this platform.

Due to an unprecedented number of applications this year, we strongly advise any student hoping to join us to accept our offer and rank us as their first choice.

For any questions or further information, please contact Ms. Simons, Head of Sixth Form.

- View [Prospectus](#)
- View [Sixth Forms Pathways](#)

Want to join our Sixth Form Pathways?

➔ Contact Ms. Simons, Head of Sixth Form.

☎ 01227931300

✉ tws_sixthform@swale.at



THIS WEEK SO FAR...

** TRACK Excellence Raffle Winners Announced! **

Each Wednesday, the school will run a 'TRACK Excellence' raffle with two prizes for students. To enter, students just have to have seven or more positive signatures over the two weeks. Students with negative signatures are still able to participate.

This week's winners are:

Finley (Year 8) and Honey (Year 8)

We've teamed up with local businesses for amazing rewards.

This week's prize is vouchers for local café Revival.



Students with their prizes in the TRACK Excellence raffle.



Artsmark
Gold Award
Awarded by Arts
Council England



ON TRACK TO EXCELLENCE

A member of Swale Academies Trust

Registered Office: Ashdown House, Johnson Road, Sittingbourne, ME10 2JS

Registered in England No. 07344732

**** Book of Commendation- Celebrating Student Success! ****

This week, we're proud to recognise the following students for their outstanding work:

Art & Design:

- **Maisie, Millie, Freya, Emily (Year 10):** for their impressive Coursework project.
- **Albert (Year 9)** – for his wonderful acrylic art work.

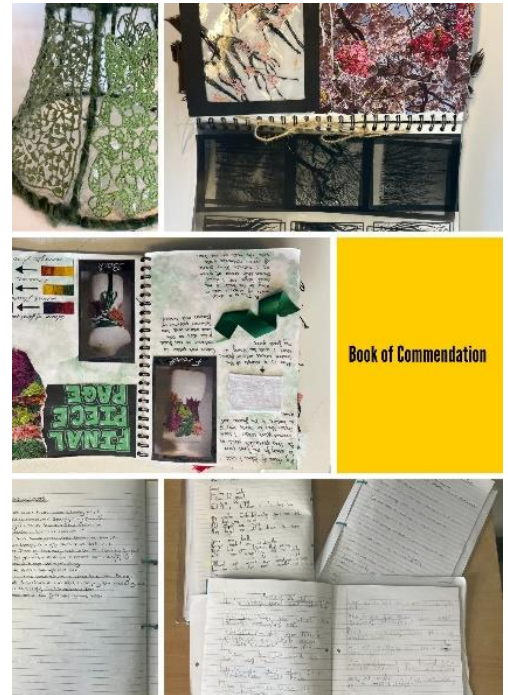
English:

- **Miles, Imogen, Henry, Zack, Florence, Matt and Grace (Year 7):** for their insightful writing on love and their exploration of Romeo and Juliet.

Spanish:

- **Henry (Year 8):** for his excellent written work in Spanish.

Congratulations to all our commended students!



Artsmark Gold Award
Awarded by Arts Council England



GOLD SCHOOL 2020

ON TRACK TO EXCELLENCE

A member of Swale Academies Trust

Registered Office: Ashdown House, Johnson Road, Sittingbourne, ME10 2JS

Registered in England No. 07344732

** Turner Contemporary Hosts Y12 Film Studies Networking **

Before the Easter break, our Year 12 Film Studies students attended an enriching 'Into Film' short films and networking event at the Turner Contemporary Gallery. The event featured screenings of three exceptional short films from the BFI, followed by an inspiring talk from renowned Composer and Sound Design artist, Bankey Ojo. Students then had the valuable opportunity to network with peers from other schools and industry professionals.



** UCAS Discovery Event for Year 12 **

As our Year 12 students begin to explore their post-Sixth Form options, we are excited to offer them a valuable opportunity to attend a **UCAS Discovery event in Maidstone on Tuesday, June 3rd**. This event goes beyond university applications, providing students with information on apprenticeships and connections with potential employers. Students will have the chance to network with apprenticeship providers, specialists from various employment sectors and university representatives. Our aim is for this day to be both informative and inspiring, encouraging students to consider their future aspirations.

If you would like your child to participate in this trip, please provide consent via Parentpay. For further information, please contact the KS5 Progress Leader, Ms O'Flaherty at tw_s_admin@swale.at



**** Cucina's Concept Menu Update ****

Cucina's 'Concept Weeks' are here! Tuesday to Thursday this week was all about 'Spud King' and next week we're bringing you the 'Caribbean Kitchen'! Students can customize their meals with bases and toppings.



**** Mental Health, Wellbeing and Online Safety Resources ****

In our continued commitment to promoting mental wellbeing and online safety, we're sharing valuable resources from KOOOTH. This is particularly timely following the recent 'Adolescence' documentary, which highlighted crucial online safety concerns. KOOOTH offers support and guidance on social anxiety, low mood, and staying safe online, empowering both parents and students. To further support our community, KOOOTH has produced a 15-minute video on staying safe online, a vital aspect of our students' wellbeing. We strongly encourage you to watch this video and discuss its content with your children. Additionally, KOOOTH provides helpful leaflets with information on these topics and how to sign up for their services.

- [15-Minute Social Media and Staying Safe Online Video by KOOOTH](#)
- [Social anxiety](#)
- [Online Safety Guide Kooth](#)
- [Kooth- Navigating Depression and low mood](#)



Artsmark Gold Award
Awarded by Arts Council England



ON TRACK TO EXCELLENCE

A member of Swale Academies Trust

Registered Office: Ashdown House, Johnson Road, Sittingbourne, ME10 2JS

Registered in England No. 07344732

UPCOMING EVENTS

Week of: June 30th - July 4th, 2025 (5 days)



Work experience is a valuable opportunity for you to:

- Gain exposure to the professional world and explore different career paths.
- Develop essential skills desired by employers, such as communication, teamwork, and problem-solving.
- Boost your confidence and build your personal and social skills.

Finding Your Placement:

You are responsible for finding your own work experience placement. This allows you to explore your interests and connect with potential career fields. We will be providing support through Unifrog, a platform that helps you track and manage your placement search.

Have Questions?

If you have any further questions about work experience, please don't hesitate to contact:

- Email: tws-workexperience@swale.at

We thank you in advance for any opportunities you are able to provide.



Are you able to support a Year 10 or 12 student develop valuable employability skills?

We are seeking work experience placements for our students during the week of **Monday 30th June to Friday 4th July 2025.**

We manage our Work Experience program through Unifrog, which handles all the necessary administration, including risk assessments, health and safety policies, and parental/carer consent. If you can offer a placement during this week, we would be incredibly grateful.

Please complete the short form to express your interest or scan the QR code:

Form: [Work Experience Placement Form](#)

Alternatively, you can contact us directly at: tws-workexperience@swale.at



**Artsmark
Gold Award**
Awarded by Arts
Council England



ON TRACK TO EXCELLENCE

A member of Swale Academies Trust

Registered Office: Ashdown House, Johnson Road, Sittingbourne, ME10 2JS

Registered in England No. 07344732

NOTICE BOARD

YOUNG CARERS AT THE WHITSTABLE SCHOOL

Did you know that The Whitstable School now has a Young Carers Support Group running every Wednesday lunchtime in GZ2?

This group will be run by Mrs James and is open to all Young Carers (registered or non-registered) caring for a family member with; a long term illness, disability, poor mental health or substance misuse.

Whether it is to just sit and listen, talk and share or just be in the company of other young people with caring responsibilities, we are here!

What is a Young Carer?

Young Carers provide unpaid care for a family member or friend with an illness, disability, mental health issue, or addiction. They support the cared-for and other family members with practical tasks, physical care, and emotional support, whilst at the same time trying to live their own life.

Do you think that your child is a Young Carer? Please contact Mrs James for more info or give Kent Young Carers a call on 0300 111 1110, email youngcarers@imago.community or take a look at the Kent Young Carers website: www.imago.community



Canterbury City Council, in partnership with Canterbury RFC, is hosting a fantastic FREE event called 'Give It A Go!' This is a brilliant opportunity for everyone to try out a variety of sports and activities, from Football and Rugby to Dance and Judo. There will also be health and wellbeing stalls, plus visits from Kent Police and Kent Fire & Rescue Service. Stay tuned for more details on a free shuttle service from Canterbury City Centre!



Artsmark Gold Award
Awarded by Arts Council England



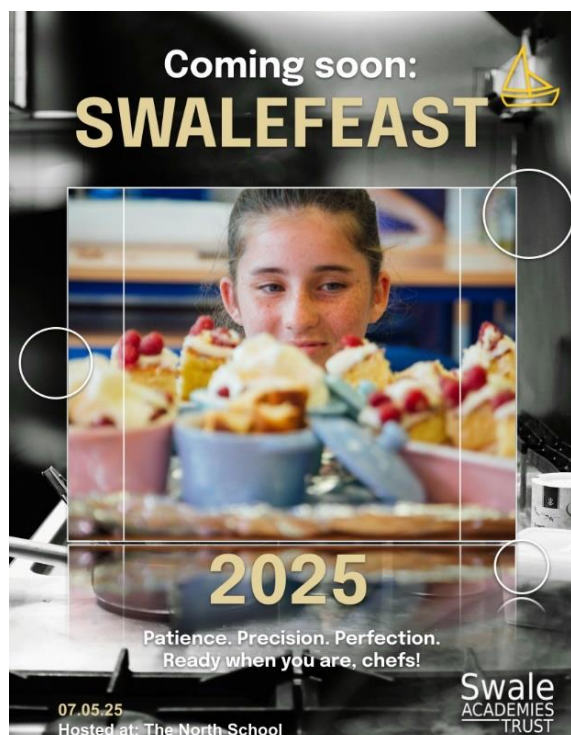
GOLD SCHOOL 2020

ON TRACK TO EXCELLENCE

A member of Swale Academies Trust

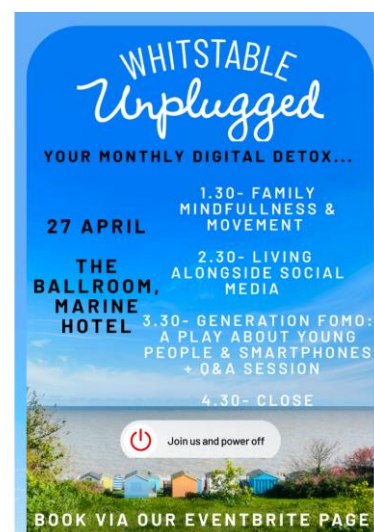
Registered Office: Ashdown House, Johnson Road, Sittingbourne, ME10 2JS

Registered in England No. 07344732



Navigating adolescence in the digital age Sunday 27th April at 1.30pm

Join **Whitstable Unplugged** this **Sunday 27th April** at the Marine Hotel, Whitstable, for a workshop on navigating adolescence in the digital age. Run by Stefan Peto, Assistant Head at Simon Langton Grammar School for Boys, you'll hear practical advice and tips on how to live alongside smartphones and social media. There'll also be a relaxing mindfulness and meditation session, plus a bite size version of Generation FOMO—perfect if you haven't yet seen this highly praised production. Tickets are free (or donation-based)—but spaces are limited, so book early or you can turn up on the day. To book click [here](#)



Artsmark
Gold Award
Awarded by Arts
Council England



GOLD
SCHOOL
2020

ON TRACK TO EXCELLENCE

A member of Swale Academies Trust

Registered Office: Ashdown House, Johnson Road, Sittingbourne, ME10 2JS

Registered in England No. 07344732



All The National College, our #WakeUpWednesday guides empower and equip parents, carers and educators with the confidence and practical skills to be able to have informed and age-appropriate conversations with children about online safety, mental health and wellbeing, and climate change. Primarily delivered by National Online Safety, these guides now address wider topics and themes. For further guides, hints and tips, please visit nationalcollege.com. Trigger Warning: This guide contains mention of suicide, which may be distressing for some readers.

What Parents & Educators Need to Know about MAKING FRIENDS ONLINE

In today's digital world, it's increasingly common for children to form friendships with people they've never met in person. While online connections can offer children a sense of belonging, they also carry significant risks. Around 18% of children aged 10 to 15 in England and Wales have chatted online with someone they've never met face to face. This guide offers expert advice for parents and educators on helping children navigate online friendships safely.

WHAT ARE THE RISKS?

- ONLINE GROOMING THREATS**
Predators can use games, chat apps or social media platforms to build relationships with children and gain their trust. This may allow them to groom the grooming or exploitation. Between April 2017 and March 2023, UK police recorded nearly 24,000 online grooming offences - an 82% increase in just five years.
- EXPOSURE TO INAPPROPRIATE CONTENT**
Children may encounter distressing or explicit material while interacting with online contacts - especially via TikTok. Intergovernmental research that is evidenced in a survey by the Children's Commissioner for England, which found that 45% of children aged 8 to 17 had seen content online that made them feel uncomfortable, worried or upset.
- COMPROMISED PERSONAL SAFETY**
Meeting an online "friend" in real life risks placing a child in serious danger. From abduction to coercion, the consequences can be devastating. Reports of children being harmed after such meetings are becoming increasingly common in the UK, highlighting the need for safeguarding intervention.
- PSYCHOLOGICAL DISTRESS**
Online harm - such as cyberbullying, grooming or exposure to disturbing content - can lead to long-term emotional issues, including anxiety, depression and PTSD. Sexist/gay groups who threaten to release sexual information about a person unless they pay their money, have reportedly targeted children as young as 11, leaving them traumatised and ashamed.
- LONG-TERM REPERCUSSIONS**
Children exposed to harmful online relationships early on may develop unhealthy beliefs about relationships, consent, or self-worth. In a recent case, a 28-year-old passed as a girl on Snapchat to befriend children aged 10 to 15, manipulating them into sexual activity and causing profound emotional distress. One 12-year-old tragically died by suicide, highlighting the long-term psychological harm of these friendships with strangers can cause.
- PRIVACY AND DATA RISKS**
Children and young people often overshare personal details - such as where they live or go to school - without understanding the consequences. In fact, 4.4% of 10 to 15-year-olds in the UK have met up in real life with someone they only appear to online.

26 FRIENDS ONLINE NOW

Advice for Parents & Educators

- TEACH SAFE ONLINE HABITS**
Help children understand how to use privacy settings, protect their personal information, spot fake profiles, and report anything suspicious or concerning, like pressure tactics. Encourage them to think critically about what they share - and whom they're talking to.
- ENCOURAGE REAL-WORLD CONNECTIONS**
Support children in building friendships through school, clubs, hobbies and activities in the real world. Steering offline relationships help reduce children's reliance on online platforms for social interaction, and can help them develop resilience and social confidence.
- KEEP CONVERSATIONS OPEN**
Let children know they can talk to you about their online life. Avoid reacting with anger or judgement, as this may prevent them from speaking up in the future. A child who feels listened to is more likely to discuss problems before they escalate.
- USE PARENTAL CONTROLS**
Parental control settings on devices, games and apps can help manage screen time, filter out inappropriate content, and monitor activity. While no system is perfect, they provide a valuable layer of protection as children explore digital spaces.

Meet Our Expert
Gabriella Russo is a safeguarding consultant with over 30 years' experience in supporting children, families, and adults across education, local authority, and mental health settings - both in the UK (including at Parliamentary level) and internationally.

#WakeUpWednesday The National College

@wake_up_weds /www.thenationalcollege @wake.up.wednesday @wake.up.weds

Users of this guide do so at their own discretion. No liability is entered into. Current as of the date of release: 23.04.2025

For more updates and events, please visit our website and follow us on X and Facebook.

<https://www.thewhitstableschool.org.uk/>
<https://www.facebook.com/TheWhitstableSchool>
<https://x.com/TheWhitSchool>

Best Wishes
The Whitstable School Team



Artsmark Gold Award
Awarded by Arts Council England



ON TRACK TO EXCELLENCE

A member of Swale Academies Trust

Registered Office: Ashdown House, Johnson Road, Sittingbourne, ME10 2JS

Registered in England No. 07344732