

02 May 2025

# NEWSLETTER

Dear Families,

What a glorious, sunny week it's been here at school! We've seen some fantastic work come out of the Art exams, and we're thrilled to announce the launch of our new virtual tour. Read on for all the details!

## Key Dates:

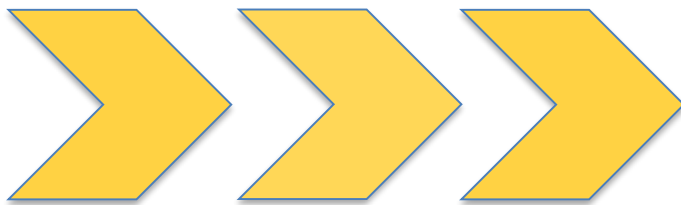
- 23 May 2025- Term 5 Ends
- 02 June 2025- Term 6 Starts

## Update

### TWS Virtual Tour

We are delighted to announce the launch of our new virtual tour! We extend our sincere gratitude to the local experts at **Skytech Aerial Solutions LTD** for their exceptional work in bringing this project to life.

[TWS Virtual Tour](#)



**NEXT WEEK IS**  
**WEEK B**  
**TIMETABLE**



**Artsmark  
Gold Award**  
Awarded by Arts  
Council England



**ON TRACK TO EXCELLENCE**

**A member of Swale Academies Trust**

Registered Office: Ashdown House, Johnson Road, Sittingbourne, ME10 2JS

Registered in England No. 07344732

## REMINDERS

### \*\* Respecting Accessible Parking Spaces \*\*

We kindly remind all parents and visitors to respect our designated accessible parking spaces. These spaces are reserved for individuals with disabilities who require close proximity to the school entrance.

Please remember:

- **Not all disabilities are visible.** Some individuals may have valid permits that are not always displayed.
- **Permits must be displayed.** If you have a valid permit, please ensure it is clearly visible in your vehicle's windscreen.
- **Cooperation is key.** We rely on everyone's cooperation to ensure these spaces are available for those who need them.

We understand that parking can be challenging, but we ask that you be considerate of others and refrain from parking in accessible spaces unless you have a valid permit.

Thank you for your understanding and cooperation in making our school accessible for everyone.

### \*\* Engines Off \*\*

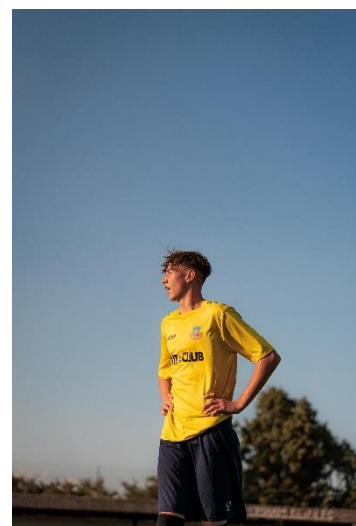
To help reduce air pollution, noise levels, and respect our neighbour's, please remember to turn off your engine while waiting to drop off or pick up your child. Thank you for your cooperation.

## SIXTH FORM UPDATE

### \*\* Football Academy Update \*\*

What a way to finish the season! 🎉

Our **TWS Football Academy** secured a fantastic 4-0 victory against Dartford Academy on Wednesday in the National League. Goals from our brilliant Year 12 students Luca, Ionut and Alex sealed the win! This superb season saw our all-Year 12 squad finish an impressive 6th in the league, competing against teams with many Year 13 and 14 players – a fantastic sign for an even brighter future next year!



Artsmark  
Gold Award  
Awarded by Arts  
Council England



GOLD  
SCHOOL  
2020

ON TRACK TO EXCELLENCE

**A member of Swale Academies Trust**

Registered Office: Ashdown House, Johnson Road, Sittingbourne, ME10 2JS

Registered in England No. 07344732

In other news, **The Whitstable School Sixth Form** is still accepting applications for **September!**

Don't miss the chance to explore our diverse curriculum and innovative sports pathways. Visit **Kent Choices** to view our offerings and apply – we only accept applications through this platform.

Due to an unprecedented number of applications this year, we strongly advise any student hoping to join us to accept our offer and rank us as their first choice.

For any questions or further information, please contact Ms. Simons, Head of Sixth Form.

- View [Prospectus](#)
- View [Sixth Forms Pathways](#)

### Want to join our Sixth Form Pathways?

➔ Contact Ms. Simons, Head of Sixth Form.

☎ 01227931300

✉ [tws\\_sixthform@swale.at](mailto:tws_sixthform@swale.at)



## THIS WEEK SO FAR...

### \*\* TRACK Excellence Raffle Winners Announced! \*\*

Each Wednesday, the school will run a 'TRACK Excellence' raffle with two prizes for students. To enter, students just have to have seven or more positive signatures over the two weeks. Students with negative signatures are still able to participate.

This week's winners are:

**Bronwen and Amelia (Year 8)**

We've teamed up with local businesses for amazing rewards. This week's prize is vouchers for local bookshop **Tales on Moon Lane**.



Students with their prizes in the TRACK Excellence raffle.



Artsmark  
Gold Award  
Awarded by Arts  
Council England



## ON TRACK TO EXCELLENCE

**A member of Swale Academies Trust**

Registered Office: Ashdown House, Johnson Road, Sittingbourne, ME10 2JS

Registered in England No. 07344732

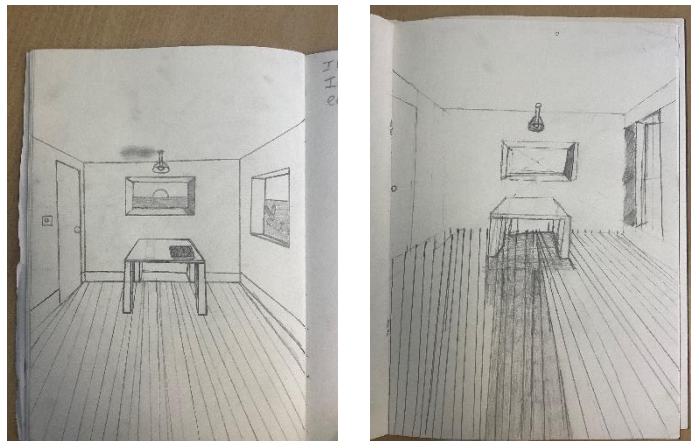
## \*\* Book of Commendation- Celebrating Student Success! \*\*

This week, we're proud to recognise the following students for their outstanding work:

### Art & Design:

- **Scarlett and Millie (Year 7):** for their impressive artwork on perspective.

Congratulations to all our commended students!



## \*\* Incredible Achievements \*\*

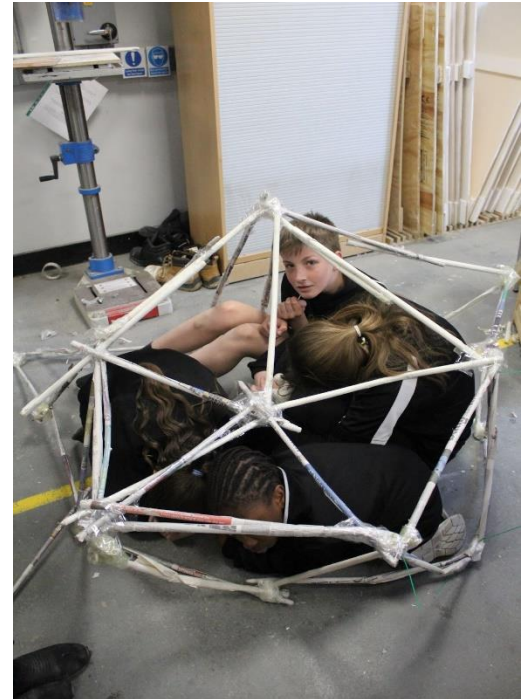
Huge congratulations to Year 11's **Chloe** for her incredible performance at the National Table Tennis Finals! After winning 4 out of 5 matches in her group (only losing to England No. 1), she went on to secure a BRONZE medal in the final four! A phenomenal achievement!



Great progress for **Ella (Year 9)** from her para development training last weekend - she's getting faster!

**\*\* Summary of the STEM Academy's recent activities: \*\***

Our **STEM Academy** students tackled an exciting Engineering challenge this term: designing and building geodesic domes large enough to shelter at least three people. Inspired by the sphere's natural efficiency in climate control, they ingeniously transformed newspaper into structural rods using the stixx machine, securing them with tape. The result? Spacious and robust domes comfortably accommodating four or more individuals – a testament to their problem-solving skills and collaborative spirit.



Get ready, **Vex Robotics fans!** The name of the 2025-2026 VEX IQ Competition Game has been announced: 'Mix & Match'! Tune in to VEX TV on Wednesday, May 14th, during the VEX Robotics World Championship in Dallas, Texas, for the LIVE game reveal! Our teams are already buzzing with anticipation and having fun guessing what 'Mix & Match' will entail!

Click [here](#) to watch the Live event.



**Artsmark Gold Award**  
Awarded by Arts Council England



**GOLD SCHOOL 2020**

**ON TRACK TO EXCELLENCE**

**A member of Swale Academies Trust**

Registered Office: Ashdown House, Johnson Road, Sittingbourne, ME10 2JS

Registered in England No. 07344732

## STEM Research Project Field Investigations:

Our **STEM Academy** students have been actively conducting field investigations to gather data for their research projects, in collaboration with The Institute of Research in Schools (IRIS). Their investigations are focused on testing two key hypotheses:

1. How does biodiversity change with increasing distance from concrete surfaces?
2. Are different insect species attracted to specific types of bait or colours?

The students will now be concentrating on analysing their collected data and finalizing their research artefacts in preparation for presenting their findings at The IRIS Conference in June.



## STEM Drop-Down Event for Year 7:

We also held an engaging **STEM drop-down event for Year 7**, with 35 students participating in a challenge to design a Kart for the Alpine F1 Team. The event was a fantastic display of our students' enthusiasm, collaboration, problem-solving skills and innovative thinking within the context of STEM and Motorsport. They effectively shared ideas and considered what makes their school community unique, translating these values into iconic designs inspired by the timeless aesthetics of motorsports.



## **\*\* Raising Awareness: St. Giles Trust Assemblies \*\***

A big thank you to the **St. Giles Trust** for delivering three impactful assemblies today to our Year 8, 9, and 10 students. They led important discussions around the realities of Gang Culture, Antisocial Behaviour and Knife Crime. The feedback from our students has been overwhelmingly positive, finding the sessions both really interesting and informative. Thank you, **St. Giles Trust**, for your valuable contribution!



## **\*\* KCC Driver's Awareness Course \*\***

This week, Year 12 students commenced the first of five important driving awareness sessions. Recognizing that young drivers are statistically more vulnerable on the road, the course focuses on crucial aspects like hazard perception and the impact of visual limitations on judgment. This valuable program has been recognized for its achievement and innovation with the 2024 Prince Michael International Road Safety Award.

## **\*\* Year 13 CV Writing Workshop \*\***


On Monday, our Year 13 students participated in an engaging and interactive CV writing workshop led by a recruitment specialist. The session provided practical guidance on crafting compelling CVs that will help them stand out when applying for future employment and apprenticeship opportunities.

## **\*\* Year 11 MFL Speaking Exams \*\***

Over the past two weeks, our Year 11 French and Spanish students have been completing their GCSE speaking exams. We are immensely proud of their resilience and positive attitudes throughout this process, which bodes well for their upcoming written examinations.

## \*\* Supporting Your Child's Reading \*\*



We encourage parents to be reading role models to foster a lifelong love of reading in their children. Continuing to share reading time, even for just 15 minutes outdoors during the warmer months, can be a calming and habit-forming activity. Remember that Kent Library Services offers a wide selection of ebooks in addition to physical books via <https://kent.overdrive.com/>. If your child has a specific book request not in our school library, they can speak with Ms. Gee or Mrs. Davies about placing an order. Happy reading this long weekend!



### Upgrade to Libby

You'll find the same great titles from your library in a modern, easy-to-use app. Plus, you can enjoy offline reading, Apple Carplay and Android Auto support, push notifications, and more.

Your loans, holds, and wish list will be waiting for you in Libby. Learn more at [meet.libbyapp.com](https://meet.libbyapp.com).



## \*\* UCAS Discovery Event for Year 12 \*\*

As our Year 12 students begin to explore their post-Sixth Form options, we are excited to offer them a valuable opportunity to attend a **UCAS Discovery event in Maidstone on Tuesday, June 3rd**. This event goes beyond university applications, providing students with information on apprenticeships and connections with potential employers. Students will have the chance to network with apprenticeship providers, specialists from various employment sectors and university representatives. Our aim is for this day to be both informative and inspiring, encouraging students to consider their future aspirations.

If you would like your child to participate in this trip, please provide consent via Parentpay. For further information, please contact the KS5 Progress Leader, Ms O'Flaherty at [tws\\_admin@swale.at](mailto:tws_admin@swale.at)



Artsmark  
Gold Award  
Awarded by Arts  
Council England



GOLD  
SCHOOL  
2020

ON TRACK TO EXCELLENCE

**A member of Swale Academies Trust**

Registered Office: Ashdown House, Johnson Road, Sittingbourne, ME10 2JS

Registered in England No. 07344732

## \*\* Mental Health, Wellbeing and Online Safety Resources \*\*

In our continued commitment to promoting mental wellbeing and online safety, we're sharing valuable resources from KOOTH. This is particularly timely following the recent 'Adolescence' documentary, which highlighted crucial online safety concerns. KOOTH offers support and guidance on social anxiety, low mood, and staying safe online, empowering both parents and students. To further support our community, KOOTH has produced a 15-minute video on staying safe online, a vital aspect of our students' wellbeing. We strongly encourage you to watch this video and discuss its content with your children. Additionally, KOOTH provides helpful leaflets with information on these topics and how to sign up for their services.

- [15-Minute Social Media and Staying Safe Online Video by KOOTH](#)
- [Social anxiety](#)
- [Online Safety Guide Kooth](#)
- [Kooth- Navigating Depression and low mood](#)



## UPCOMING EVENTS

### \*\* Important Notice for Year 10 and Year 12 work experience\*\*

**Week of: June 30th - July 4th, 2025 (5 days)**

**Work experience is a valuable opportunity for students to:**

- Gain exposure to the professional world and explore different career paths.
- Develop essential skills desired by employers, such as communication, teamwork and problem-solving.
- Boost confidence and build personal and social skills.

### Finding Your Placement:

Students are responsible for finding their own work experience placement. This allows them to explore interests and connect with potential career fields. We will be providing support through **Unifrog**, a platform that helps track and manage placement search.

### Have Questions?

If you have any further questions about work experience, please don't hesitate to contact:

- Email: [tws-workexperience@swale.at](mailto:tws-workexperience@swale.at)



Artsmark  
Gold Award  
Awarded by Arts  
Council England



GOLD  
SCHOOL  
2020

ON TRACK TO EXCELLENCE

**A member of Swale Academies Trust**

Registered Office: Ashdown House, Johnson Road, Sittingbourne, ME10 2JS

Registered in England No. 07344732



Are you able to support a Year 10 or 12 student develop valuable employability skills? We are seeking work experience placements for our students during the week of **Monday 30th June to Friday 4th July 2025.**

We manage our Work Experience program through Unifrog, which handles all the necessary administration, including risk assessments, health and safety policies, and parental/carer consent. If you can offer a placement during this week, we would be incredibly grateful. Please complete the short form to express your interest or scan the QR code:



Form: [Work Experience Placement Form](#)

Alternatively, you can contact us directly at: [tws-workexperience@swale.at](mailto:tws-workexperience@swale.at)

**We thank you in advance for any opportunities you are able to provide!**

## \*\* Young Carers at The Whitstable School \*\*

Did you know that The Whitstable School now has a Young Carers Support Group running every Wednesday lunchtime in GZ2?

This group will be run by Mrs James and is open to all Young Carers (registered or non-registered) caring for a family member with; a long term illness, disability, poor mental health or substance misuse.

Whether it is to just sit and listen, talk and share or just be in the company of other young people with caring responsibilities, we are here!

What is a Young Carer?

Young Carers provide unpaid care for a family member or friend with an illness, disability, mental health issue, or addiction. They support the cared-for and other family members with practical tasks, physical care, and emotional support, whilst at the same time trying to live their own life.

Do you think that your child is a Young Carer? Please contact Mrs James for more info or give Kent Young Carers a call on 0300 111 1110, email [youngcarers@imago.community](mailto:youngcarers@imago.community) or take a look at the Kent Young Carers website: [www.imago.community](http://www.imago.community)



Artsmark  
Gold Award  
Awarded by Arts  
Council England



GOLD  
SCHOOL  
2020

**ON TRACK TO EXCELLENCE**

**A member of Swale Academies Trust**

Registered Office: Ashdown House, Johnson Road, Sittingbourne, ME10 2JS

Registered in England No. 07344732

## NOTICE BOARD

THE WHITSTABLE SCHOOL BREAKFAST CLUB



# Start Your Day Right




Come to the Restaurant from 8:20 - 8:35 everyday  
Bacon or sausage rolls, croissants, waffles, pain au chocolate and pain au raisin Prices from £1.55  
Free porridge available to all students everyday



Coming soon:



# SWALEFEAST



**2025**

Patience. Precision. Perfection.  
Ready when you are, chefs!

07.05.25  
Hosted at: The North School

- 7 schools
- 7 cooking teams
- 21 students
- Cuisine in honour of VE Day

Ready when you are, chefs!  
The timer is ticking.

*"The standard was very impressive with confidence high, even though the ingredients to be used were only known that morning!" - Head Judge, SwaleFeast 2024*





Artsmark  
Gold Award  
Awarded by Arts  
Council England



## ON TRACK TO EXCELLENCE

**A member of Swale Academies Trust**

Registered Office: Ashdown House, Johnson Road, Sittingbourne, ME10 2JS

Registered in England No. 07344732

**FREE FAMILY EVENT**

canterbury city council

## SAVE THE DATE!

**Saturday 12 July 2025**  
**10am to 4pm**  
 at Canterbury Rugby Club, CT4 7DZ

Your chance to **'GIVE IT A GO!'** with various sports from around the district.  
 More information coming soon!

Canterbury City Council, in partnership with Canterbury RFC, is hosting a fantastic FREE event called 'Give It A Go!' This is a brilliant opportunity for everyone to try out a variety of sports and activities, from Football and Rugby to Dance and Judo. There will also be health and wellbeing stalls, plus visits from Kent Police and Kent Fire & Rescue Service. Stay tuned for more details on a free shuttle service from Canterbury City Centre!

# RAF HERNE BAY TOWN SHOW

**30<sup>TH</sup> MAY - 1<sup>ST</sup> JUNE**  
**10:00 - 17:30**



Get ready, Herne Bay! The RAF is landing near you for an unmissable event of adventure, excitement, and hands-on activities for all ages. Whether you're an aviation enthusiast, a thrill-seeker, or simply looking for a fun family day out, there's something for everyone.

Step inside an RAF aircraft and capture the moment as you imagine life as a pilot. Test your agility and determination with our high-energy challenges or learn essential life-saving skills in one of our workshops.

Curious about where a future with the RAF could take you? Chat with our friendly team about the wide range of exciting careers and opportunities across engineering, logistics, medical, and more. We'll also have interactive activities and youth engagement experiences designed to spark inspiration and ambition.

With live music from a RAF band as they fill the town show with energy and atmosphere, the atmosphere will be vibrant from start to finish. So, rally your family, bring your friends, and join us for an unforgettable event of discovery, energy, and connection. **We'll see you at Herne Bay!**

SCAN TO BOOK YOUR FREE TICKET NOW!



OR CLICK HERE TO BOOK

**ROYAL AIR FORCE**  
REGULAR & RESERVE

**NO ORDINARY JOB**



**Artsmark Gold Award**  
 Awarded by Arts Council England



**ON TRACK TO EXCELLENCE**

**A member of Swale Academies Trust**

Registered Office: Ashdown House, Johnson Road, Sittingbourne, ME10 2JS

Registered in England No. 07344732



At The National College, our WakeUpWednesday guides empower and equip parents, carers and educators with the confidence and practical skills to be able to have informed and age-appropriate conversations with children about online safety, mental health and wellbeing, and climate change. Formerly delivered by National Online Safety, these guides now address wider topics and themes. For further guides, hints and tips, please visit [nationalcollege.com](https://www.nationalcollege.com).

## 10 Top Tips for Parents and Educators SAFETY ON THE ROAD

Traffic-related incidents are a significant risk for young pedestrians and cyclists, so understanding road safety is crucial for children's wellbeing. While all road users share responsibility for keeping one another safe, this guide offers strategies for empowering young people to navigate the roads confidently and responsibly.

- 1 TAKE PRACTICE JOURNEYS**  
Making 'practice' journeys with children is a great way to help them stay safe, thereby instilling responsible behaviours and having road safety conversations as they prepare to travel independently. Add hazard perception activities like spotting electric vehicles - which may have a green number plate - and point out how quiet they are. Children learn by watching others; remind them that their peers might not always be the best role models.
- 2 BE BRIGHT, BE SEEN**  
Visibility is lower during darker winter days, and drivers need to take extra care to look out for pedestrians. Wearing bright and reflective clothing can help make children more visible to drivers near roads in poor daylight conditions. Encourage children to wear light, bright or fluorescent clothing. When it's dark, wear reflective clothing or materials such as a reflective armband or jacket.
- 3 EYES UP**  
Encourage children to look up and keep their eyes on the road. Teach them to constantly watch for traffic and practice double-checking the road before crossing - looking right, left and then right again.
- 4 LIMIT DISTRACTIONS**  
Where possible, devices like phones should be kept away from children while out and about near roads. If they're carrying devices, these should be put away until they've reached their destination. Children must also avoid playing with toys or being distracted by friends. If a friend wants to show them something funny on their phone, there'll be time for that once they've safely arrived.
- 5 SLOW DOWN**  
Discuss the importance of walking instead of crossing immediately. It can be tricky to judge the speed of traffic and spot obstacles that could cause a trip or a fall. For safety, children must stop and think before they get to the kerb and should always walk - not run - when crossing the road. They should avoid crossing until they're certain they have plenty of time. Even if traffic seems to be long way off, it could still be approaching very quickly.
- 6 STOP BEFORE THE KERB**  
Teach children to stop before reaching the kerb - not right at the edge of it. Hitting before they get to the kerb allows them to see if anyone's coming, whereas getting too close to traffic is dangerous. If there's no pavement, children should stand back from the road's edge but ensure they can still see approaching traffic.
- 7 CROSS SAFELY**  
Children should always find a safe spot to cross the road, prioritising zebra crossings or pelican crossings, footbridges and subway. Find a place where they can see traffic coming from both directions. Avoid crossing near junctions, bends in the road, or obstacles that block their view. Instead moving to somewhere they can see and be seen. Remind them to use their eyes and ears together when checking the road, as sometimes they can't hear traffic before they can see it. Looking and listening while crossing helps them quickly spot traffic, including cyclists and motorcyclists sitting between other vehicles.
- 8 PARKED VEHICLES**  
Crossing between parked vehicles is very dangerous. Teach children to use extra caution if crossing in this way and, ideally, avoid it altogether. They should use the outside edge of a vehicle as if it were the kerb, walking and checking for traffic before moving. They should ensure vehicles aren't about to move, by looking for drivers in the vehicles and listening for engines running - but remember that electric vehicles may move off silently. They should always make sure there is a gap between any parked vehicles on the other side, so they can reach the pavement.
- 9 REVERSING VEHICLES**  
Children must never cross behind a reversing vehicle - it's extremely dangerous. Remind them to look for white reversing lights and listen out for warning sounds. Can they hear the engine sound or a radio playing inside the vehicle?
- 10 WAIT FOR THE BUS TO LEAVE**  
When getting off a bus, children must wait for it to leave before crossing as they can have a clear view of the road in both directions. This also allows them to see and be seen by other road users. Crossing near large vehicles is particularly dangerous and should be avoided.

**Meet Our Expert**  
THINK! is a year-round national campaign that aims to encourage safe road behaviours - whether we're driving, cycling, horse riding or walking - with the aim of reducing the number of people killed and injured on the UK's roads each year. Find out more at: <https://www.think.gov.uk/education-resources/>

**#WakeUpWednesday** The National College

X @wake\_up\_weds | www.thenationalcollege | @wake.up.wednesday | @wake.up.weds

Users of this guide do so at their own discretion. No liability is entered into. Current as of the date of release: 30.04.2025

For more updates and events, please visit our website and follow us on X and Facebook.

<https://www.thewhitstableschool.org.uk/>  
<https://www.facebook.com/TheWhitstableSchool>  
<https://x.com/TheWhitSchool>

Best Wishes  
The Whitstable School Team



Artsmark Gold Award  
Awarded by Arts Council England



ON TRACK TO EXCELLENCE

A member of Swale Academies Trust

Registered Office: Ashdown House, Johnson Road, Sittingbourne, ME10 2JS

Registered in England No. 07344732