

09 May 2025

NEWSLETTER

Dear Families,

It's been a fantastic week! From VE Day celebrations and commemorations to the truly inspiring achievements of our students, there is so much to share. Read on for all the details!

Key Dates:

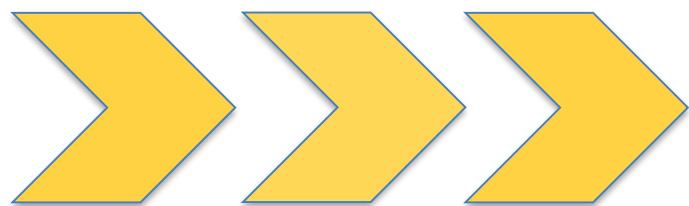
- 23 May 2025- Term 5 Ends
- 02 June 2025- Term 6 Starts

Update

TWS Virtual Tour

We are delighted to announce the launch of our new virtual tour! We extend our sincere gratitude to the local experts at **Skytech Aerial Solutions LTD** for their exceptional work in bringing this project to life.

[TWS Virtual Tour](#)



NEXT WEEK IS
WEEK A
TIMETABLE



**Artsmark
Gold Award**
Awarded by Arts
Council England



**GOLD
SCHOOL
2020**

ON TRACK TO EXCELLENCE

A member of Swale Academies Trust

Registered Office: Ashdown House, Johnson Road, Sittingbourne, ME10 2JS

Registered in England No. 07344732

REMINDERS

** Respecting Accessible Parking Spaces **

We kindly remind all parents and visitors to respect our designated accessible parking spaces. These spaces are reserved for individuals with disabilities who require close proximity to the school entrance.

Please remember:

- **Not all disabilities are visible.** Some individuals may have valid permits that are not always displayed.
- **Permits must be displayed.** If you have a valid permit, please ensure it is clearly visible in your vehicle's windscreen.
- **Cooperation is key.** We rely on everyone's cooperation to ensure these spaces are available for those who need them.

We understand that parking can be challenging, but we ask that you be considerate of others and refrain from parking in accessible spaces unless you have a valid permit.

Thank you for your understanding and cooperation in making our school accessible for everyone.

** Engines Off **

To help reduce air pollution, noise levels, and respect our neighbour's, please remember to turn off your engine while waiting to drop off or pick up your child. Thank you for your cooperation.

SIXTH FORM UPDATE

** Football Academy Update**

What a week for football at our school! 🎉

HUGE congrats to our Year 10 stars **Roman, Albie and Freddie** who, playing with **Football Futures**, WON their National U15 JPL semi-final 1-0 against Stevenage! They're now off to the NATIONAL CUP FINAL this Saturday vs Hayes & Yeading! Good luck!

And that's not all! Our **Football Academy** put on an incredible display, absolutely blowing away Chatham Town with a massive 14-0 victory in the Academies Cup! Goals galore from our Year 12 stars **Alex, Luca, Ionut, Tiago and Mattias**. Massive well done on their phenomenal win!

And a special good luck to Whitstable Town Football Club this Sunday as they play at Wembley!



Artsmark
Gold Award
Awarded by Arts
Council England



GOLD
SCHOOL
2020

ON TRACK TO EXCELLENCE

A member of Swale Academies Trust

Registered Office: Ashdown House, Johnson Road, Sittingbourne, ME10 2JS

Registered in England No. 07344732

In other news, **The Whitstable School Sixth Form** is still accepting applications for **September!** Don't miss the chance to explore our diverse curriculum and innovative sports pathways. Visit **Kent Choices** to view our offerings and apply – we only accept applications through this platform.

Due to an unprecedented number of applications this year, we strongly advise any student hoping to join us to accept our offer and rank us as their first choice.

For any questions or further information, please contact Ms. Simons, Head of Sixth Form.

- View [Prospectus](#)
- View [Sixth Forms Pathways](#)

Want to join our Sixth Form Pathways?

➡ Contact Ms. Simons, Head of Sixth Form.

☎ 01227931300

✉ tws_sixthform@swale.at



THIS WEEK SO FAR...

** TRACK Excellence Raffle Winners Announced! **

Each Wednesday, the school will run a 'TRACK Excellence' raffle with two prizes for students. To enter, students just have to have seven or more positive signatures over the two weeks. Students with negative signatures are still able to participate.

This week's winners are:
Alfie and Noah (Year 8)

We've teamed up with local businesses for amazing rewards. This week's prize is vouchers for local café **Revival**.



Students with their prizes in the TRACK Excellence raffle.



Artsmark
Gold Award
Awarded by Arts
Council England



GOLD
SCHOOL
2020

ON TRACK TO EXCELLENCE

A member of Swale Academies Trust

Registered Office: Ashdown House, Johnson Road, Sittingbourne, ME10 2JS

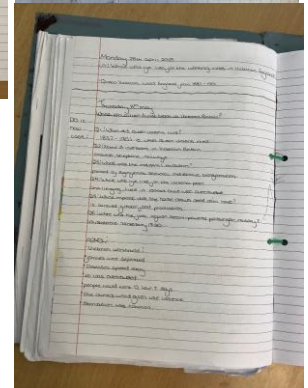
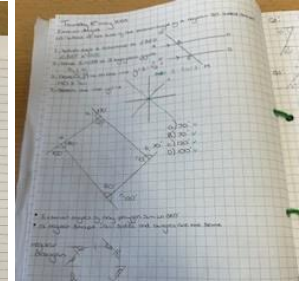
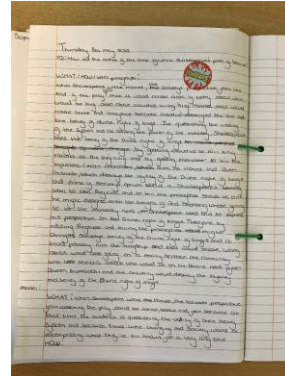
Registered in England No. 07344732

**** Book of Commendation- Celebrating Student Success! ****

We are pleased to announce the following students have been recognised for their exceptional work and have been added to the Book of Commendation.

English:

- **Charlotte and Hayden (Year 9):** showed excellent focus in their lesson, resulting in great student engagement with persuasive writing.
- **Sophia (Year 8):** insightful English work on Hamlet.



Maths and History:

- **Sophia (Year 8):** has been commended three times this week for beautifully presented maths work and her learning about Oliver Twist and Victorian Britain in History.

Congratulations to all our commended students!

**** Year 9 at SwaleFeast Cooking Competition ****

Well done to Year 9 students **Charis, George and Henry** who represented us at the **SwaleFeast** cooking competition on Wednesday! Facing a British food/VE Day challenge, they showed incredible teamwork and resilience to create a delicious Cornish pasty meal and a classic Gypsy Tart under pressure. We're so proud of their efforts!



Artsmark Gold Award
Awarded by Arts Council England



ON TRACK TO EXCELLENCE

A member of Swale Academies Trust

Registered Office: Ashdown House, Johnson Road, Sittingbourne, ME10 2JS

Registered in England No. 07344732

** Students Commemorate VE Day in Uniform **

Fantastic effort from all our students who came in their cadet and guides uniforms today to celebrate and commemorate VE Day!



** Library Remembers VE Day **

It was wonderful to see so many pupils visiting the library this week for VE Day celebrations! Mrs. Davies has put together a fantastic collection of fiction and non-fiction books to help them understand the events of 80 years ago.

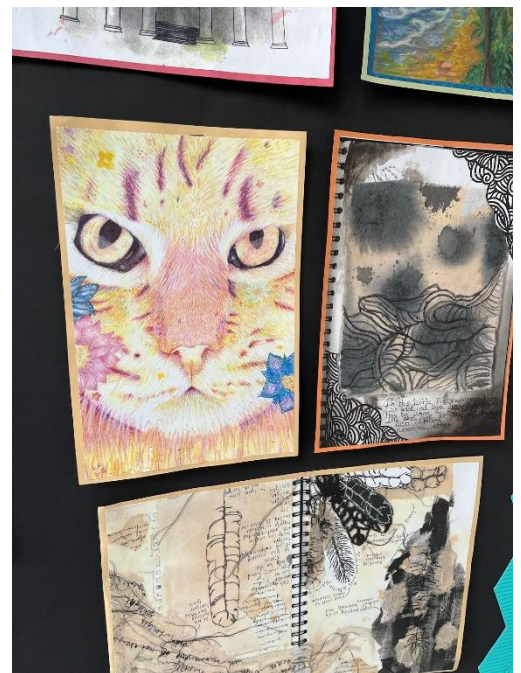
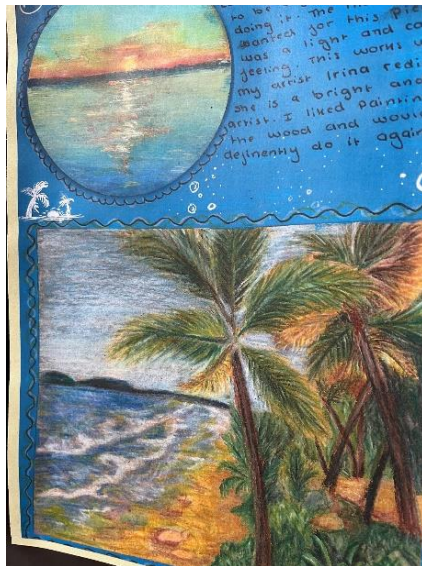
We're always looking for great recommendations! If you know of any other insightful or engaging books related to VE Day or World War II that children and young people might enjoy, please do send them our way.

For those looking for a starting point, here are our current top five recommendations, courtesy of [Books for Topics](#)



**** Artist of the Month ****

Congratulations to all the incredibly talented students featured in this month's "Artist of the Month" display. Well done!



Artsmark Gold Award
Awarded by Arts Council England



GOLD SCHOOL 2020

ON TRACK TO EXCELLENCE

A member of Swale Academies Trust

Registered Office: Ashdown House, Johnson Road, Sittingbourne, ME10 2JS

Registered in England No. 07344732

**** Incredible Achievements ****

HUGE congrats to our amazing Art, Textile and Photography students who shone at the Fishslab Gallery Jon Bird Competition! Sixth Form's **Shire (Year 12)** took home the Judges Choice 1st Prize for her incredible sculpture, GCSE student **Sienna (Year 11)** won Judges Choice Runner-Up for her stunning photography and former student **Erin** (now at UCA Canterbury) scooped the People's Choice Award for her textiles piece! We're so proud of their talent and hard work.



Artsmark Gold Award
Awarded by Arts Council England



GOLD SCHOOL 2020

ON TRACK TO EXCELLENCE

A member of Swale Academies Trust

Registered Office: Ashdown House, Johnson Road, Sittingbourne, ME10 2JS

Registered in England No. 07344732

More incredible news! Our former **Sixth Form** student, **Logan Tindell** (Screenwriter) continues to achieve great things. He was recently featured in the Whitstable Community Ad magazine and even more impressively, won the **Best Student Drama award** at the prestigious **Royal Television Society's (RTS) Southern Awards!**

Logan's talent has also gained international recognition, with his film "**The Extraordinary Marvel of Francesco Linguine**" earning 1st runner-up for best film at the **2024 Alternative Film Festival in Toronto**.

You can watch his short film and find out more about UCA at www.uca.ac.uk/news/2025/awards-aplenty-at-rts-southern-awards.

Congratulations, Logan!
We're so proud of your success!

Whitstable CommunityAd Magazine www.communityad.co.uk

Logan's outstanding student film triumphs at the RTS Awards

At the recent annual Royal Television Society's (RTS) Southern Awards, former Whitstable Sixth Form student Logan Tindell won the Best Student Drama award.

The Extraordinary Marvel of Francesco Linguine was created by third-year BA (Hons) Film Production course students Logan Tindell (Screenwriter), Brandon Sadler (Director), Elliot Duvoisin (Director of Photography), Seth Harrison (Producer) and Lily Askew (Production Designer), who all graduated from UCA Farnham last year.

Logan said: "It's wonderful. Seeing our little crazy film getting that level of recognition was beyond any of our expectations, which you could see if you saw our reactions when the presenter read out the winner."

The film celebrates imaginative storytelling, recounting a story of two friends birdwatching at an old fort and discovering a dead body on the beach. Vibrant, cinematic and elaborate theories are then concocted as to how they died.

"It was very much inspired by the works of Guy Ritchie and Edgar Wright, having both dabbled with the blend of comedy and crime, with inspirations like Wes Anderson... and Buck from Ice Age 3," added Logan.

"I basically wrote a script for middle-aged men to remain straight-faced when portraying characters all named after different pasta!"



Logan (pictured second from left), holding the award.

Logan's talent has also been recognised internationally. The Extraordinary Marvel of Francesco Linguine earned 1st runner-up for best film in the 2024 Winter Showcase at the Alternative Film Festival in Toronto.

To watch the short film and for more information on UCA, go online and visit www.uca.ac.uk/news/2025/awards-aplenty-at-rts-southern-awards.

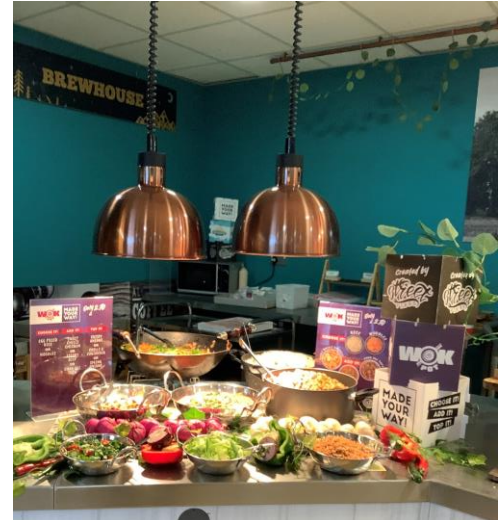
A big congratulations to Logan and the team from all of us here at **CommunityAd!**



4  Follow Us Please mention **CommunityAd** Magazine when responding to advertisements

**** Restaurant Concept Weeks ****

This week's 'Wok Pot' concept is already a big hit with our students! Stay tuned for more delicious updates!




During the summer term Ice pops will be on sale for just 50p each in the courtyard every **Wednesday, Thursday, and Friday**. Cash only.





**** Supporting Your Child's Reading ****

We encourage parents to be reading role models to foster a lifelong love of reading in their children. Continuing to share reading time, even for just 15 minutes outdoors during the warmer months, can be a calming and habit-forming activity. Remember that Kent Library Services offers a wide selection of ebooks in addition to physical books via <https://kent.overdrive.com/>. If your child has a specific book request not in our school library, they can speak with Ms. Gee or Mrs. Davies about placing an order. Happy reading this long weekend!



Upgrade to Libby

You'll find the same great titles from your library in a modern, easy-to-use app. Plus, you can enjoy offline reading, Apple Carplay and Android Auto support, push notifications, and more.

Your loans, holds, and wish list will be waiting for you in Libby. Learn more at meet.libbyapp.com.



Artsmark Gold Award
Awarded by Arts Council England



ON TRACK TO EXCELLENCE

A member of Swale Academies Trust

Registered Office: Ashdown House, Johnson Road, Sittingbourne, ME10 2JS

Registered in England No. 07344732

UPCOMING EVENTS

** Year 8 DofE Introduction Evening! **

Calling all Year 8 parents, carers, and students! Interested in learning about the nationally recognized Duke of Edinburgh Bronze Award? Join us for an introduction evening on **Thursday, 22nd May 2025, from 5-6pm on The Stage.**



Find out about the DofE expectations, amazing achievements from previous year groups, exciting expeditions and trips, and get all your questions answered.

Students can start their DofE journey in Year 9, so there's plenty of time to enrol even if you can't make this evening. We hope to see you there!

** UCAS Discovery Event for Year 12 **

As our Year 12 students begin to explore their post-Sixth Form options, we are excited to offer them a valuable opportunity to attend a **UCAS Discovery event in Maidstone on Tuesday, June 3rd**. This event goes beyond university applications, providing students with information on apprenticeships and connections with potential employers. Students will have the chance to network with apprenticeship providers, specialists from various employment sectors and university representatives. Our aim is for this day to be both informative and inspiring, encouraging students to consider their future aspirations.

If you would like your child to participate in this trip, please provide consent via Parentpay. For further information, please contact the KS5 Progress Leader, Ms O'Flaherty at tw_s_admin@swale.at



Artsmark
Gold Award
Awarded by Arts
Council England



GOLD
SCHOOL
2020

ON TRACK TO EXCELLENCE

A member of Swale Academies Trust

Registered Office: Ashdown House, Johnson Road, Sittingbourne, ME10 2JS

Registered in England No. 07344732

**** Important Notice for Year 10 and Year 12 work experience****

Week of: June 30th - July 4th, 2025 (5 days)

Work experience is a valuable opportunity for students to:

- Gain exposure to the professional world and explore different career paths.
- Develop essential skills desired by employers, such as communication, teamwork and problem-solving.
- Boost confidence and build personal and social skills.



Finding Your Placement:

Students are responsible for finding their own work experience placement. This allows them to explore interests and connect with potential career fields. We will be providing support through **Unifrog**, a platform that helps track and manage placement search.

Have Questions?

If you have any further questions about work experience, please don't hesitate to contact:

- Email: tw_s-workexperience@swale.at



Attention all business owners and employers



Are you able to support a Year 10 or 12 student develop valuable employability skills? We are seeking work experience placements for our students during the week of **Monday 30th June to Friday 4th July 2025.**

We manage our Work Experience program through Unifrog, which handles all the necessary administration, including risk assessments, health and safety policies, and parental/carer consent. If you can offer a placement during this week, we would be incredibly grateful. Please complete the short form to express your interest or scan the QR code:



Form: [Work Experience Placement Form](#)

Alternatively, you can contact us directly at: tw_s-workexperience@swale.at

We thank you in advance for any opportunities you are able to provide



**Artsmark
Gold Award**
Awarded by Arts
Council England



**GOLD
SCHOOL
2020**

ON TRACK TO EXCELLENCE

A member of Swale Academies Trust

Registered Office: Ashdown House, Johnson Road, Sittingbourne, ME10 2JS

Registered in England No. 07344732

NOTICE BOARD

** Mental Health, Wellbeing and Online Safety Resources **

In our continued commitment to promoting mental wellbeing and online safety, we're sharing valuable resources from KOOOTH. This is particularly timely following the recent 'Adolescence' documentary, which highlighted crucial online safety concerns. KOOOTH offers support and guidance on social anxiety, low mood, and staying safe online, empowering both parents and students. To further support our community, KOOOTH has produced a 15-minute video on staying safe online, a vital aspect of our students' wellbeing. We strongly encourage you to watch this video and discuss its content with your children. Additionally, KOOOTH provides helpful leaflets with information on these topics and how to sign up for their services.

- [15-Minute Social Media and Staying Safe Online Video by KOOOTH](#)
- [Social anxiety](#)
- [Online Safety Guide Kooth](#)
- [Kooth- Navigating Depression and low mood](#)



THE WHITSTABLE SCHOOL BREAKFAST CLUB

Start Your Day Right

Come to the Restaurant from 8:20 - 8:35 everyday
Bacon or sausage rolls, croissants, waffles, pain au chocolate and pain au raisin Prices from £1.55
Free porridge available to all students everyday



Artsmark
Gold Award
Awarded by Arts
Council England



GOLD
SCHOOL
2020

ON TRACK TO EXCELLENCE

A member of Swale Academies Trust

Registered Office: Ashdown House, Johnson Road, Sittingbourne, ME10 2JS

Registered in England No. 07344732



SEND Support and Parenting Support Drop-In

For all parents/carers, young people, and children (0-25 years) with special educational needs and disabilities (diagnosed and undiagnosed) and for any parents/carers needing general parenting advice.



SEND Support

We can help you with understanding your child's needs, and offer tips and strategies to help at home, signposting to local SEND support services and getting the best from your child's education.

General Parenting

We can help you with understanding your child's needs, managing behaviour, and offering different strategies to support with parenting at home.

Kingsmead Family Hub

DATE: 1st Friday of the month:

- 4th April
- 2nd May
- 6th June
- 4th July
- 1st August
- 5th September
- 3rd October
- 7th November
- 5th December
- 2nd January
- 6th February
- 6th March

TIME: 9:30am - 11:30am

VENUE: Kingsmead Road,
Canterbury, CT2 7PH

Whitstable Family Hub

DATE: 2nd Tuesday of the month:

- 8th April
- 13th May
- 10th June
- 8th July
- 12th August
- 9th September
- 14th October
- 11th November
- 9th December
- 13th January
- 10th February
- 10th March

TIME: 9:30am - 11:30am

VENUE: Tower Parade,
Whitstable, CT5 2BJ

Herne Bay Family Hub

DATE: 3rd Wednesday of the month:

- 16th April
- 21st May
- 18th June
- 16th July
- 20th August
- 17th September
- 15th October
- 19th November
- 17th December
- 21st January
- 18th February
- 18th March

TIME: 9:30am - 11:30am


VENUE: Memorial Park, Kings
Road, Herne Bay,
CT6 5RG

Visit your local Family Hub today

www.kent.gov.uk/familyhub



Coming soon:
SWALEFEAST



2025

Patience. Precision. Perfection.
Ready when you are, chefs!

07.05.25
Hosted at: The North School

Swale
ACADEMIES
TRUST

- 7 schools
- 7 cooking teams
- 21 students
- Cuisine in honour of VE Day

Ready when you are, chefs!
The timer is ticking.

"The standard was very impressive with confidence high, even though the ingredients to be used were only known that morning!" - Head Judge, SwaleFeast 2024

Swale
ACADEMIES
TRUST

Prom Bake Sale

Fundraiser

Hosted by:
Year 11
Miss Butler
Miss Clements

FRIDAY
BREAK AND LUNCH AT
THE REWARDS SHOP

50p - £2

- Cupcakes
- Brownies
- cookies
- and more!

For more information visit Miss Butler in upper creative



Artsmark
Gold Award
Awarded by Arts
Council England



GOLD SCHOOL 2020

ON TRACK TO EXCELLENCE

A member of Swale Academies Trust

Registered Office: Ashdown House, Johnson Road, Sittingbourne, ME10 2JS

Registered in England No. 07344732

FREE FAMILY EVENT

canterbury city council

SAVE THE DATE!

Saturday 12 July 2025
10am to 4pm
 at Canterbury Rugby Club, CT4 7DZ

Your chance to **'GIVE IT A GO!'** with various sports from around the district.
 More information coming soon!

Canterbury City Council, in partnership with Canterbury RFC, is hosting a fantastic FREE event called 'Give It A Go!' This is a brilliant opportunity for everyone to try out a variety of sports and activities, from Football and Rugby to Dance and Judo. There will also be health and wellbeing stalls, plus visits from Kent Police and Kent Fire & Rescue Service. Stay tuned for more details on a free shuttle service from Canterbury City Centre!

RAF HERNE BAY TOWN SHOW

30TH MAY - 1ST JUNE
10:00 - 17:30



Get ready, Herne Bay! The RAF is landing near you for an unmissable event of adventure, excitement, and hands-on activities for all ages. Whether you're an aviation enthusiast, a thrill-seeker, or simply looking for a fun family day out, there's something for everyone.

Step inside an RAF aircraft and capture the moment as you imagine life as a pilot. Test your agility and determination with our high-energy challenges or learn essential life-saving skills in one of our workshops.

Curious about where a future with the RAF could take you? Chat with our friendly team about the wide range of exciting careers and opportunities across engineering, logistics, medical, and more. We'll also have interactive activities and youth engagement experiences designed to spark inspiration and ambition.

With live music from a RAF band as they fill the town show with energy and atmosphere, the atmosphere will be vibrant from start to finish. So, rally your family, bring your friends, and join us for an unforgettable event of discovery, energy, and connection. We'll see you at Herne Bay!

SCAN TO BOOK YOUR FREE TICKET NOW!



OR CLICK HERE TO BOOK

ROYAL AIR FORCE REGULAR & RESERVE

NO ORDINARY JOB



Artsmark Gold Award
 Awarded by Arts Council England



ON TRACK TO EXCELLENCE

A member of Swale Academies Trust

Registered Office: Ashdown House, Johnson Road, Sittingbourne, ME10 2JS

Registered in England No. 07344732



SEND Support and Parenting Support Drop-In

For all parents/carers, young people, and children (0-25 years) with special educational needs and disabilities (diagnosed and undiagnosed) and for any parents/carers needing general parenting advice.



SEND Support

We can help you with understanding your child's needs, and offer tips and strategies to help at home, signposting to local SEND support services and getting the best from your child's education.

General Parenting

We can help you with understanding your child's needs, managing behaviour, and offering different strategies to support with parenting at home.

Kingsmead Family Hub

DATE: 1st Friday of the month:

- 4th April
- 2nd May
- 6th June
- 4th July
- 1st August
- 5th September
- 3rd October
- 7th November
- 5th December
- 2nd January
- 6th February
- 6th March

TIME: 9:30am - 11:30am

VENUE: Kingsmead Road,
Canterbury, CT2 7PH

Whitstable Family Hub

DATE: 2nd Tuesday of the month:

- 8th April
- 13th May
- 10th June
- 8th July
- 12th August
- 9th September
- 14th October
- 11th November
- 9th December
- 13th January
- 10th February
- 10th March

TIME: 9:30am - 11:30am

VENUE: Tower Parade,
Whitstable, CT5 2BJ

Herne Bay Family Hub

DATE: 3rd Wednesday of the month:

- 16th April
- 21st May
- 18th June
- 16th July
- 20th August
- 17th September
- 15th October
- 19th November
- 17th December
- 21st January
- 18th February
- 18th March

TIME: 9:30am - 11:30am

VENUE: Memorial Park, Kings
Road, Herne Bay,
CT6 5RG

Visit your local Family Hub today

www.kent.gov.uk/familyhub





At The National College, our **WakeUpWednesday** guides empower and equip parents, carers and educators with the confidence and practical skills to be able to have informed and age-appropriate conversations with children about online safety, mental health and wellbeing, and climate change. Formerly delivered by National Online Safety, these guides now address wider topics and themes. For further guides, hints and tips, please visit nationalcollege.com.

10 Top Tips for Parents and Educators

FOSTERING A SENSE OF BELONGING

Feeling a genuine sense of belonging is essential for the emotional and social development of children and young people. Belonging significantly boosts self-esteem, resilience, and mental wellbeing, reducing feelings of isolation and anxiety. This guide provides practical strategies to help parents and educators cultivate inclusive environments, enhancing both academic outcomes and overall happiness among young people.

- 1 CELEBRATE INDIVIDUAL DIFFERENCES**
Acknowledge and celebrate the uniqueness of every child. Promoting diversity and inclusion creates an environment where differences are valued rather than stigmatised. This acceptance empowers children to confidently express their identities and feel genuinely included, fostering a robust sense of belonging within both school and home settings.
- 2 CONSISTENT COMMUNICATION**
Regularly communicate and actively listen to children, showing genuine interest in their thoughts and experiences. Creating open communication channels helps young people feel heard and valued. This approach not only builds trust but also reinforces children's perception of themselves as a vital part of their family, school and community.
- 3 MEANINGFUL PARTICIPATION**
Give children opportunities to actively participate and contribute, whether in classrooms, at home, or in community activities. Meaningful participation helps children feel their input matters, reinforcing a sense of purpose and value. Including them in decisions and responsibilities enhances their self-worth, promoting a deeper sense of belonging and inclusion.
- 4 FOSTER STRONG RELATIONSHIPS**
Support and encourage positive relationships between peers, educators, and families. Strong, healthy relationships significantly impact a child's sense of belonging, providing emotional support and reducing feelings of loneliness. Facilitate social interactions through group activities, teamwork, and collaborative learning to strengthen these vital connections.
- 5 CREATE INCLUSIVE SPACES**
Design environments that reflect diversity and are welcoming for everyone. Inclusive spaces where all children see themselves represented can dramatically improve their feelings of safety and acceptance. Consider classroom displays, books, and resources that celebrate various cultures, abilities, and backgrounds to visibly reinforce inclusivity and belonging.
- 6 MODEL POSITIVE BEHAVIOUR**
Adults play a crucial role by demonstrating inclusive, empathetic, and respectful behaviours. Modelling positive interactions and attitudes sets a clear standard for children to follow. Children are likely to replicate inclusive behaviour, creating a supportive community atmosphere where everyone feels accepted and valued for who they are.
- 7 BUILD EMOTIONAL LITERACY**
Teach and encourage emotional expression and understanding among children. Developing emotional literacy enables young people to articulate their feelings and empathise with others. An emotionally intelligent environment cultivates mutual respect and compassion, fostering a deeper sense of belonging and interpersonal connection within groups.
- 8 SUPPORT PEER MENTORSHIP**
Encourage peer mentorship or buddy systems within educational settings. Peer support enhances feelings of connectedness and security, reducing feelings of isolation. When children support one another, they naturally build community bonds, nurturing a supportive culture where belonging is fostered.
- 9 RECOGNISE EFFORTS REGULARLY**
Consistently acknowledge children's contributions and achievements, however small. Recognition reinforces a child's understanding that their presence and efforts are important. Celebrating individual and collective successes helps cultivate a positive environment where children feel acknowledged, motivated, and deeply connected to peers and adults around them.
- 10 ADDRESS BULLYING PROMPTLY**
Quickly address any incidents of bullying. Promptly intervening demonstrates a clear commitment to an inclusive and safe environment. Creating a culture where incidents are safely and effectively addressed reinforces trust, security, and a sense of belonging for everyone involved.

Meet Our Expert
Anna Bateman is Director of Holroyd Education Ltd and Director for Wellbeing and Family Services at Leigh Trust. With extensive experience in systemic mental health in schools, she supports educational leaders across the UK to develop inclusive, resilient, and supportive learning environments. Anna is also the lead expert for mental health at The National College.

#WakeUpWednesday **The National College**

Source: See full reference list on guide page at nationalcollege.com/guides/fostering-a-sense-of-belonging

X @wake_up_weds f /www.thenationalcollege Instagram @wake.up.wednesday TikTok @wake.up.weds

Users of this guide do so at their own discretion. No liability is entered into. Current as of the date of release: 07.05.2025

For more updates and events, please visit our website and follow us on X and Facebook.

- <https://www.thewhitstableschool.org.uk/>
- <https://www.facebook.com/TheWhitstableSchool>
- <https://x.com/TheWhitSchool>

Best Wishes
The Whitstable School Team



Artsmark Gold Award
Awarded by Arts Council England



ON TRACK TO EXCELLENCE

A member of Swale Academies Trust

Registered Office: Ashdown House, Johnson Road, Sittingbourne, ME10 2JS

Registered in England No. 07344732