

06 June 2025

# NEWSLETTER

Dear Families,

We hope you all had a restful and enjoyable half-term break!  
We've already kicked off the new term with some fantastic events and incredible student achievements this week.  
Read on for more details and highlights!

## Key Dates:

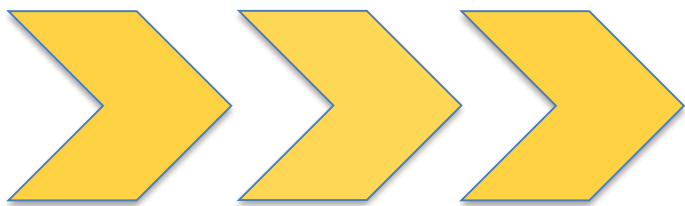
- 25 June 2025 - Year 11 Prom
- 10 and 11 July - School Immunisations for Year 8 students
- 18 July 2025- Sports day
- 22 July 2025 - Term 6 Ends and Non-Uniform day. Students finish at 12:45

## Update

### TWS Matilda the Musical

Don't miss out on a fantastic show!  
Tickets are now on sale for our school's production of Matilda! Come along and support our talented students!

[Ticket source](#)



**NEXT WEEK IS**  
**WEEK B**  
**TIMETABLE**



**Artsmark  
Gold Award**  
Awarded by Arts  
Council England



**GOLD  
SCHOOL  
2020**

**ON TRACK TO EXCELLENCE**

**A member of Swale Academies Trust**

Registered Office: Ashdown House, Johnson Road, Sittingbourne, ME10 2JS

Registered in England No. 07344732

**\*\* Welcome Back & Looking Ahead to a Productive Summer Term \*\***

Dear Parents, Carers and Students,

It's a pleasure to welcome all our students back following the half-term break, as we enter our longer summer term.

Firstly, I'd like to extend a heartfelt thank you to all the parents and carers of our Year 11 students for their continued support. Our Year 11s are doing a fantastic job as they progress through their GCSE exams, and we are equally proud of our Year 13 students who are preparing diligently for the next stage of their journey — whether that be university, apprenticeships or in employment.

This term, a key focus will be planning for the next academic year, particularly around timetabling and curriculum development. We'll be sharing relevant updates with the appropriate year groups in due course. We are also reviewing our rooming arrangements and I'm pleased to share that we're in a position to further reduce the use of corridor-based classrooms. This is a positive step forward in the evolution of our learning environment and will help support improved outcomes for all students.

Our wide range of clubs and extracurricular activities continues to thrive, and we're excited about the many reward trips that are already planned. I'd also like to wish the best of luck to the students taking part in the DfE Duke of Edinburgh expeditions over the coming two weekends — a wonderful opportunity for personal growth and team development.

This year, we are placing particular emphasis on further developing formative assessment within lessons and continuing to strengthen students' oracy skills. We want to ensure that all students are given meaningful opportunities to work in pairs and groups, and to build confidence in speaking and expressing themselves.

I'm also delighted to announce that we have now appointed our prefect teams in Years 11, 12, and 13. Student leadership at our school goes far beyond traditional responsibilities. Our prefects will be working on charitable initiatives, strengthening community partnerships, and leading school improvement projects — playing a key role in driving us forward on our journey towards excellence.

As always, your communication with the school is invaluable. We welcome your thoughts, ideas, and suggestions as we prepare for the new academic year. Please feel free to share them via [TWS\\_admin@swale.at](mailto:TWS_admin@swale.at)

Wishing you all a productive and positive summer term.

Warm regards,

Mr A Holmes  
Headteacher



**Artsmark  
Gold Award**  
Awarded by Arts  
Council England



**GOLD  
SCHOOL  
2020**

**ON TRACK TO EXCELLENCE**

***A member of Swale Academies Trust***

*Registered Office: Ashdown House, Johnson Road, Sittingbourne, ME10 2JS*

*Registered in England No. 07344732*

## REMINDERS

### \*\* Respecting Accessible Parking Spaces \*\*

We kindly remind all parents and visitors to respect our designated accessible parking spaces. These spaces are reserved for individuals with disabilities who require close proximity to the school entrance.

Please remember:

- **Not all disabilities are visible:** Please remember that many individuals with disabilities may not show outward signs.
- **Permits must be displayed:** If you have a valid permit, please ensure it is clearly visible in your vehicle's windscreen. Some individuals may have valid permits that are not always displayed.
- **Cooperation is key:** We rely on everyone's cooperation to ensure these spaces are available for those who need them.

We understand that parking can be challenging, but we ask that you be considerate of others and refrain from parking in accessible spaces unless you have a valid permit.

Thank you for your understanding and cooperation in making our school accessible for everyone.

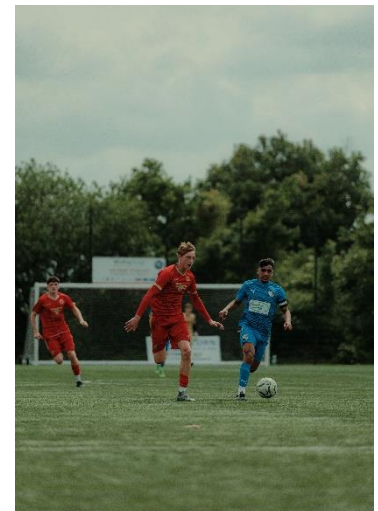
### \*\* Engines Off \*\*

To help reduce air pollution, noise levels, and respect our neighbour's, please remember to turn off your engine while waiting to drop off or pick up your child. Thank you for your cooperation.

## SIXTH FORM UPDATE

### \*\* Football Academy Update\*\*

HUGE Congratulations to **Luca in Year 12!** We're incredibly proud to celebrate Luca, who has been awarded a prestigious scholarship to pursue his degree in the United States! Starting in Summer 2026, he'll explore general studies before diving into Mechanical or Electrical Engineering, all while competing in football for his university. What an amazing academic and athletic opportunity! But the excitement doesn't stop there! Luca has also been selected for a potentially career-changing three-week football event in Dubai! He'll be training and competing with teams from the UAE's premier leagues, eager to showcase his talent and hopefully secure a professional football contract. We wish Luca all the very best on these incredible ventures!



Artsmark  
Gold Award  
Awarded by Arts  
Council England



ON TRACK TO EXCELLENCE

**A member of Swale Academies Trust**

Registered Office: Ashdown House, Johnson Road, Sittingbourne, ME10 2JS

Registered in England No. 07344732

**\*\* Year 12 Explores Post-18 Pathways & Summer Opportunities! \*\***

Our Year 12 students recently had an inspiring and informative day at a UCAS fair, exploring options from over 100 universities! This visit was invaluable in helping them understand the diverse pathways available post-18.

Huge congratulations also goes to **Chloe and Megan in Year 12**, who successfully secured places on competitive residential summer school programmes at the University of Brighton and Anglia Ruskin University! What fantastic opportunities!

Over the next few weeks, we'll be welcoming guest speakers to discuss the university application process, student finance, and how to craft standout personal statements. We're incredibly excited to see Year 12 embark on their UCAS, apprenticeship, and future employment journeys!



**THIS WEEK SO FAR...**

**\*\* TRACK Excellence Raffle Winners Announced! \*\***

Each Wednesday, the school will run a 'TRACK Excellence' raffle with two prizes for students. To enter, students just have to have seven or more positive signatures over the two weeks. Students with negative signatures are still able to participate.

This week's winners are:

**Holly (Year 7) and Finley (Year 8)**

We've teamed up with local businesses for amazing rewards.

This week's prize is vouchers for local book store:

**Tales on Moon Lane.**



Students with their prizes in the TRACK Excellence raffle.



Artsmark  
Gold Award  
Awarded by Arts  
Council England



**ON TRACK TO EXCELLENCE**

**A member of Swale Academies Trust**

Registered Office: Ashdown House, Johnson Road, Sittingbourne, ME10 2JS

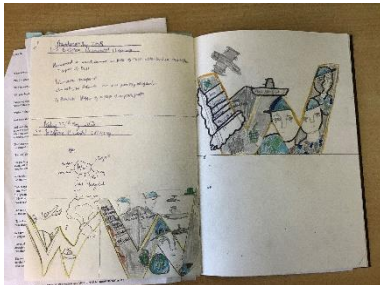
Registered in England No. 07344732

**\*\* Book of Commendation- Celebrating Student Success! \*\***

We are pleased to announce the following students have been recognised for their exceptional work and have been added to the Book of Commendation.

**Art:**

- **Nancy and Finley (Year 8)** for beautiful Illuminated letters in Art.
- **Mat (Year 7)** for recreating Mount Fuji.
- **Jack, Ruby, Lia and Beatrix (all Year 9)** for amazing cherry drawings.



**\*\* Students Explore HVAC Innovations at Swegon Factory! \*\***

Our Year 10 Construction and Year 12 Product Design students recently had an invaluable experience visiting the local Swegon factory, a leader in the HVAC (Heating, Ventilation, and Air Conditioning) industry!

Students gained a first-hand look at Swegon's cutting-edge facilities and testing lab. They witnessed the production of essential fire and smoke control dampers, understanding how these life-saving components prevent the spread of fire in buildings and link directly to classroom learning in engineering and safety.

The visit was also a fantastic opportunity for students to engage directly with industry experts, asking questions and gaining insights into careers in product design, engineering, and construction.

This real-world interaction provided a clear link between their studies and potential future pathways.

A huge thank you to all the staff at Swegon for providing such an inspiring and valuable day, broadening our students' understanding of the HVAC industry and its diverse career opportunities!



**ON TRACK TO EXCELLENCE**

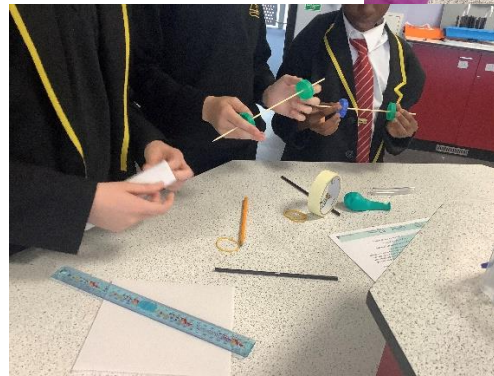
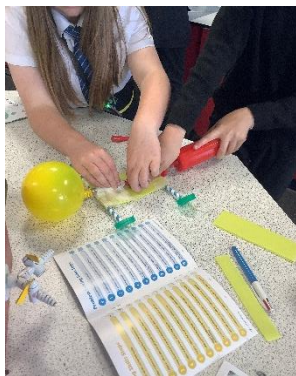
**A member of Swale Academies Trust**

Registered Office: Ashdown House, Johnson Road, Sittingbourne, ME10 2JS

Registered in England No. 07344732

**\*\* STEM Academy Launches STEM Horizons with Canterbury Christ Church University! \*\***

This week, our STEM Academy students had their exciting induction to the STEM Horizons program with Canterbury Christ Church University! Students jumped into a series of tasks designed to ignite curiosity and broaden aspirations. Applying their STEM skills, they worked as "Directors" and "Builders" to complete problem-solving challenges, including constructing a balloon buggy with minimal instructions. It was a fantastic display of teamwork and ingenuity! Looking ahead, Canterbury Christ Church University will be collaborating with our STEM Academy for the next 12 months. Students will gain invaluable experiences through workplace visits, participate in skills sessions with STEM Ambassadors, and continuously build on their Science Capital. We're incredibly excited about this partnership!



**\*\* Chloe (Year 11) Selected for England U16's Table Tennis Team! \*\***

Following her incredible top 4 finish at the National Schools Tournament, we're thrilled to announce **Chloe** has been selected to represent England Girls U16's Schools at the International Table Tennis tournament! She'll be travelling to Jersey with the team from June 27th-29th, competing against nations like Ireland, Scotland & Wales. What a phenomenal achievement for **Chloe** and The Whitstable School! We are incredibly proud!



**Artsmark Gold Award**  
Awarded by Arts Council England



**GOLD SCHOOL 2020**

**ON TRACK TO EXCELLENCE**

**A member of Swale Academies Trust**

Registered Office: Ashdown House, Johnson Road, Sittingbourne, ME10 2JS

Registered in England No. 07344732

**\*\* Creative Opportunity with BritKids at Canterbury College! \*\***

We're excited to share a fantastic creative opportunity for students with BritKids at Canterbury College! Please find the flyer attached for full details on the classes available.

If your child would like to attend these classes but you are unable to fund it, please send email for the attention of **Mrs. Connell** to [tws\\_admin@swale.at](mailto:tws_admin@swale.at) to be considered for a bursary. The Whitstable School has one free place available! When emailing, please include:

- Your child's full name
- Their year group
- The reason for attending the class
- Which specific class they are interested in joining

Otherwise, if you are able to fund the place, please apply directly as instructed on the flyer to secure your child's spot.



**\*\* Robotics Club information \*\***

Get ready to build, innovate, and compete in our **Robotics Club** at The Whitstable School!

This exciting club is open to **all students in [Years 7-10]** who are curious about engineering, coding, problem-solving or just love to tinker. No prior experience is necessary – just a keen mind and a willingness to learn!



**Come and join the robotics team!**  
Year 7, 8,9 & 10 only.  
Participate in Vex IQ competition against other schools!




Tuesdays lunchtime - Thursday After School  
Robotics Club in LZ28

Contact: Mrs Donovan-Bayley



**Artsmark Gold Award**  
Awarded by Arts Council England



**GOLD SCHOOL 2020**

**ON TRACK TO EXCELLENCE**

**A member of Swale Academies Trust**

Registered Office: Ashdown House, Johnson Road, Sittingbourne, ME10 2JS

Registered in England No. 07344732

**\*\* Happy National Fish and Chips Day! \*\***

Our amazing Cucina Restaurant has made a real effort to decorate and celebrate the occasion today!  
Plus, get ready for a special **BBQ menu next Wednesday, June 11th!**



## SAVOUR the flavours of SUMMER

### Menu

- Thai "Songkran" noodles
- ~~~~~
- Cinco de "Chipotle" Mayo Hot Wrap
- ~~~~~
- Festival Beats Sub Roll
- ~~~~~
- Fire Pit Platter – Meat or Vegetarian Option Available
- ~~~~~
- S'mores Bar
- ~~~~~
- Glaston"Berry" Muffin
- ~~~~~
- Boomtown Banana & Chocolate Sponge



## Festival Lunch



**Artsmark  
Gold Award**  
Awarded by Arts  
Council England



**GOLD  
SCHOOL  
2020**

**ON TRACK TO EXCELLENCE**

**A member of Swale Academies Trust**

Registered Office: Ashdown House, Johnson Road, Sittingbourne, ME10 2JS

Registered in England No. 07344732

## UPCOMING EVENTS



### \*\* Nominate Our Library for National Book Tokens! \*\*

We've been alerted to an exciting opportunity from National Book Tokens that could bring a fantastic boost to our school library and we'd love your help!

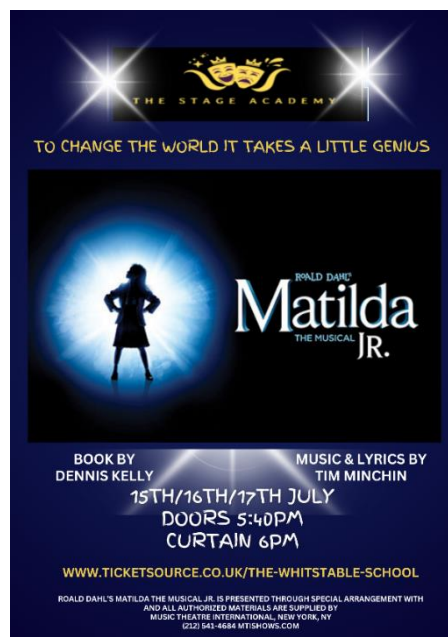
We're encouraging everyone in our school community – parents, carers, students and staff – to take a moment and **nominate The Whitstable School library!**

You can complete the nomination yourself via the National Book Tokens [website](#).

Let's work together to give our library the best chance to win some new resources for our students!

**Don't forget to get your tickets now for our school's spectacular production of Matilda!**  
It's going to be amazing.

Tickets via: [Ticket Source](#)



Artsmark  
Gold Award  
Awarded by Arts  
Council England



GOLD  
SCHOOL  
2020

## ON TRACK TO EXCELLENCE

**A member of Swale Academies Trust**

Registered Office: Ashdown House, Johnson Road, Sittingbourne, ME10 2JS

Registered in England No. 07344732

## NOTICE BOARD



**COMICON**  
AT THE MUSEUM  
JUNE 14-15 2025  
10AM - 4PM

Charity No. 1181345  
Charity No. 117982

Normal Museum Entry Fee Applies

Cosplay Competitions All Ages

ANY QUESTIONS EMAIL [INFO@RAFMANSTON.CO.UK](mailto:info@rafmanston.co.uk)

@RAF Manston History Museum  
WHAT THREE WORDS - REMARRIED.MORNINGS.PAVE

SUBJECT TO CHANGE DUE TO UNFORESEEN CIRCUMSTANCES INCLUDING, BUT NOT LIMITED TO, WEATHER CONDITIONS, MECHANICAL BREAKDOWNS AND SHORTAGE OF VOLUNTEERS AND/OR EXHIBITORS



## Prom Bake Sale

Fundraiser

Hosted by:  
Year 11  
Miss Butler  
Miss Clements

FRIDAY  
BREAK AND LUNCH AT  
THE REWARDS SHOP

50p - £2

- Cupcakes
- Brownies
- cookies
- and more!

For more information visit Miss Butler in upper creative



### THE WHITSTABLE SCHOOL BREAKFAST CLUB

## Start Your Day Right

Come to the Restaurant from 8:20 - 8:35 everyday  
Bacon or sausage rolls, croissants, waffles, pain au chocolate and pain au raisin Prices from £1.55  
Free porridge available to all students everyday



Artsmark  
Gold Award  
Awarded by Arts  
Council England



ON TRACK TO EXCELLENCE

A member of Swale Academies Trust

Registered Office: Ashdown House, Johnson Road, Sittingbourne, ME10 2JS

Registered in England No. 07344732



## SEND Support and Parenting Support Drop-In

For all parents/carers, young people, and children (0-25 years) with special educational needs and disabilities (diagnosed and undiagnosed) and for any parents/carers needing general parenting advice.



### SEND Support

We can help you with understanding your child's needs, and offer tips and strategies to help at home, signposting to local SEND support services and getting the best from your child's education.

### General Parenting

We can help you with understanding your child's needs, managing behaviour, and offering different strategies to support with parenting at home.

#### Kingsmead Family Hub

**DATE:** 1st Friday of the month:

- 4th April
- 2nd May
- 6th June
- 4th July
- 1st August
- 5th September
- 3rd October
- 7th November
- 5th December
- 2nd January
- 6th February
- 6th March

**TIME:** 9:30am - 11:30am

**VENUE:** Kingsmead Road, Canterbury, CT2 7PH

#### Whitstable Family Hub

**DATE:** 2nd Tuesday of the month:

- 8th April
- 13th May
- 10th June
- 8th July
- 12th August
- 9th September
- 14th October
- 11th November
- 9th December
- 13th January
- 10th February
- 10th March

**TIME:** 9:30am - 11:30am

**VENUE:** Tower Parade, Whitstable, CT5 2BJ

#### Herne Bay Family Hub

**DATE:** 3rd Wednesday of the month:

- 16th April
- 21st May
- 18th June
- 16th July
- 20th August
- 17th September
- 15th October
- 19th November
- 17th December
- 21st January
- 18th February
- 18th March

**TIME:** 9:30am - 11:30am

**VENUE:** Memorial Park, Kings Road, Herne Bay, CT6 5RG

Visit your local Family Hub today

[www.kent.gov.uk/familyhub](http://www.kent.gov.uk/familyhub)



**Artsmark Gold Award**  
Awarded by Arts Council England



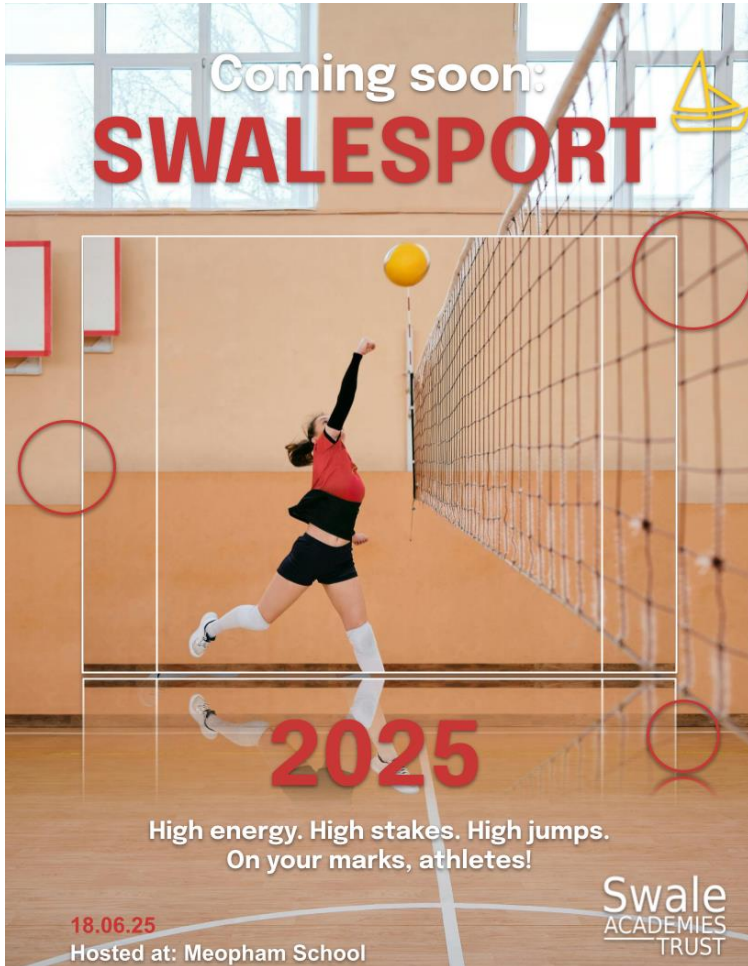
**GOLD SCHOOL 2020**

ON TRACK TO EXCELLENCE

**A member of Swale Academies Trust**

Registered Office: Ashdown House, Johnson Road, Sittingbourne, ME10 2JS

Registered in England No. 07344732



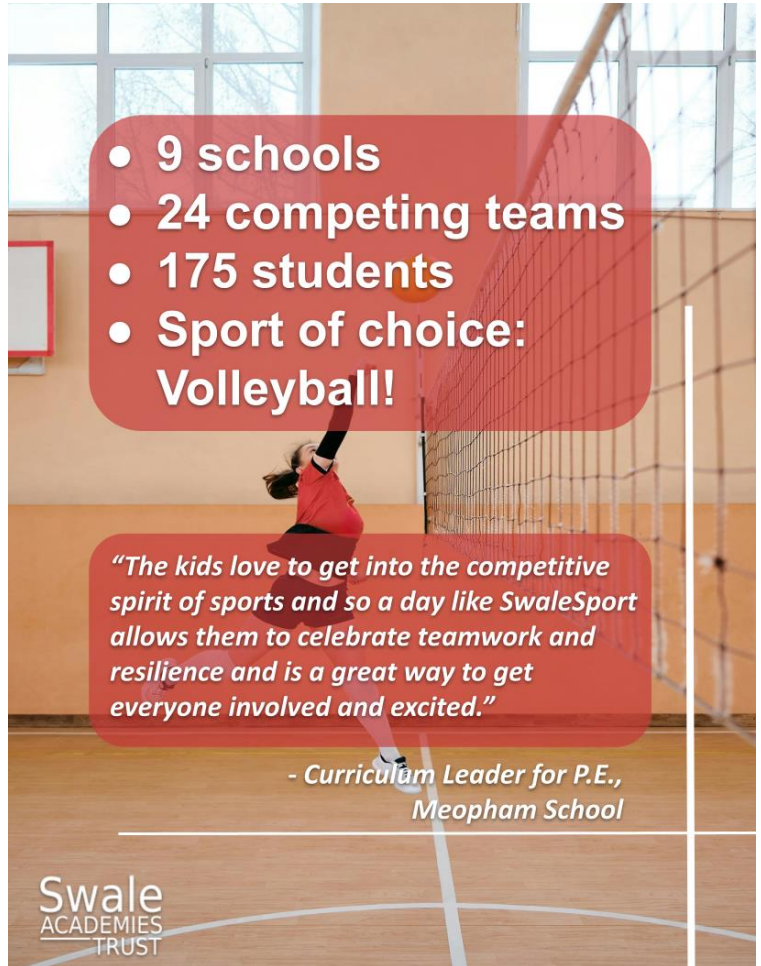
Coming soon:  
**SWALESPO**

**2025**

High energy. High stakes. High jumps.  
On your marks, athletes!

18.06.25  
Hosted at: Meopham School

Swale  
ACADEMIES  
TRUST



- 9 schools
- 24 competing teams
- 175 students
- Sport of choice:  
**Volleyball!**

*"The kids love to get into the competitive spirit of sports and so a day like SwaleSport allows them to celebrate teamwork and resilience and is a great way to get everyone involved and excited."*

- Curriculum Leader for P.E.,  
Meopham School

Swale  
ACADEMIES  
TRUST



**Artsmark  
Gold Award**  
Awarded by Arts  
Council England



**GOLD  
SCHOOL  
2020**

**ON TRACK TO EXCELLENCE**

**A member of Swale Academies Trust**

Registered Office: Ashdown House, Johnson Road, Sittingbourne, ME10 2JS

Registered in England No. 07344732



At The National College, our WakeUpWednesday guides empower and equip parents, carers and educators with the confidence and practical skills to be able to have informed and age-appropriate conversations with children about online safety, mental health and wellbeing and climate change. Formerly delivered by National Online Safety, these guides now address wider topics and themes. For further guides, hints and tips, please visit [nationalcollege.com](https://nationalcollege.com).

## What Parents & Educators Need to Know about EMOJIS

Emojis are more than playful expressions — they form a fast-evolving digital language that many adults struggle to decode. For young people, this 'secret code' is central to how they communicate identity, humour and emotions. With over 5 billion emojis sent daily on Facebook Messenger alone, understanding these symbols is key to engaging meaningfully with digital youth.

### WHAT ARE THE RISKS?

#### GENERATIONAL MISCOMMUNICATION

An emoji like 👍 (thumbs up emoji) might seem friendly to adults, but teens often interpret it as sarcastic or passive-aggressive. These differing interpretations can create confusion or unintended tension in cross-generational conversations.

#### SHIELDING BULLYING OR PEER PRESSURE

When embedded in emojis, mean-spirited jokes or exclusionary language can fly under the radar. Terms like 'mild' or 'delus' may seem harmless, but they can be used to undermine peers in subtle ways.

#### RAPIDLY SHIFTING MEANINGS

Emoji meanings can change overnight: a person standing emoji (🧑) once signified awkwardness but might now be repurposed for something entirely different. This ever-changing lexicon can leave adults in the dark and young people vulnerable to misunderstanding or misuse.

#### MASKING DISTRESS OR HARM

Some emojis are used to discreetly signal troubling behaviours. For instance, 🍃 (falling leaves emoji) or 🍷 (wine emoji) might suggest drug use, while 🍷 (wine emoji) could hint at emotional struggles. Such usage can obscure serious issues, making them harder for trusted adults to detect.

#### NORMALISING RISKY BEHAVIOURS

Emojis can make harmful actions seem light-hearted or fashionable. Things like 🍷 (wine emoji) or 🍷 (wine emoji) may appear humorous but can normalise partying, intoxication or dangerous challenges, which might otherwise raise red flags.

### Advice for Parents & Educators

#### LEARN THE LINGO

Stay updated with emoji trends and definitions using resources like [emojipedia.org](https://emojipedia.org) or Urban Dictionary. Knowing current meanings builds confidence when engaging with young people and helps spot potential concerns early.

#### CREATE SAFE SPACES FOR DISCUSSION

Encourage casual chats about emojis, online slang, memes, or social media trends. Showing interest without judgement reassures young people that they can talk about their digital world openly and safely.

#### ASK, DON'T ASSUME

Approach unfamiliar emojis with curiosity rather than suspicion. A light-hearted "what does 🍷 (wine emoji) mean these days?" can open conversation and show that you respect their knowledge.

#### PRIORITISE TRUST OVER SURVEILLANCE

While parental controls and monitoring tools can be useful, emotional safety matters most. Be someone children and young people feel they can come to — not just someone who's watching them.

### EMOJI CHEAT SHEET

The following slang terms and emojis are some common examples — please be aware this isn't an exhaustive list.

COMMON EMOJIS:	POTENTIALLY CONCERNING EMOJIS
👍 (Clown face) Foolishness or clowning around	🍷 (Ear of corn) Slang for pornography (avoids censorship algorithms)
👎 (Cock face) Cool, stylish or ruthless	🌨️ (Snowflake, snowman, snow cloud) Can symbolise cocaine
😬 (Hot face) Intense attraction or excitement	🧑 (Key, lying face) Related to cocaine use
😏 (Mojito) Shave-faced, unbothered	🍷 (Falling leaves, herb, maple leaf) Can symbolise cocaine
👑 (Crown) 'Slaying', as in doing great	🚩 (Triangular flag) Red flag; a warning sign about someone's behaviour
😬 (Pleading face) Over-affected acts or 'simping'	🍷 (Wilting flower) Often used to convey emotional struggle or despair
👁️ (Eyes) Watching drama unfold	🐍 (Snake) Can represent betrayal or being 'two-faced'
👑 (Crown) Greatest of all time (GOAT)	🍷 (Water pistol) Sometimes used to reference violence or self-harm
😬 (Wink) Confidence, sassiness, or indifference	🍷 (Warning) Used to emphasise drama, threats or emotional turmoil
	🍷 (Steaming bowl) Refers to nudes ('noods' is an abbreviation of noodles)

**Meet Our Expert**  
Keith Brani is a globally renowned emoji expert and the Editor in Chief of [emojipedia.org](https://emojipedia.org), the world's number one emoji resource. He has an MSc in Business Psychology from University College London and an MBA from Quantic School of Business and Technology.

**#WakeUpWednesday** The National College

📧 @wake\_up\_weds    🌐 /www.thenationalcollege    📷 @wake.up.wednesday    🎵 @wake.up.weds

Users of this guide do so at their own discretion. No liability is entered into. Current as of the date of release: 04.06.2025

For more updates and events, please visit our website and follow us on X and Facebook.

- <https://www.thewhitstableschool.org.uk/>
- <https://www.facebook.com/TheWhitstableSchool>
- <https://x.com/TheWhitSchool>

Best Wishes  
The Whitstable School Team



Artsmark Gold Award  
Awarded by Arts Council England



ON TRACK TO EXCELLENCE

A member of Swale Academies Trust

Registered Office: Ashdown House, Johnson Road, Sittingbourne, ME10 2JS

Registered in England No. 07344732