

13 June 2025

NEWSLETTER

Dear Families,

This week, students embraced creativity in a poetry writing workshop, showcased culinary skills in Food Preparation & Nutrition and demonstrated incredible resilience on the Duke of Edinburgh Bronze expedition. Read on for more details and highlights!

Key Dates:

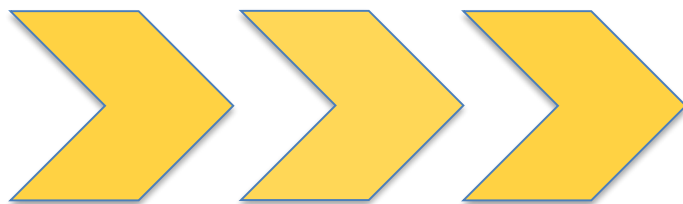
- 25 June 2025 - Year 11 Prom
- 10 and 11 July - School Immunisations for Year 8 students
- 18 July 2025- Sports day
- 22 July 2025 - Term 6 Ends and Non-Uniform day. Students finish at 12:45

Update

TWS Matilda the Musical

Don't miss out on a fantastic show!
Tickets are now on sale for our school's production of Matilda! Come along and support our talented students!

[Ticket source](#)



NEXT WEEK IS
WEEK A
TIMETABLE



**Artsmark
Gold Award**
Awarded by Arts
Council England



**GOLD
SCHOOL
2020**

ON TRACK TO EXCELLENCE

A member of Swale Academies Trust

Registered Office: Ashdown House, Johnson Road, Sittingbourne, ME10 2JS

Registered in England No. 07344732

REMINDERS

** Respecting Accessible Parking Spaces **

We kindly remind all parents and visitors to respect our designated accessible parking spaces. These spaces are reserved for individuals with disabilities who require close proximity to the school entrance.

Please remember:

- **Not all disabilities are visible:** Please remember that many individuals with disabilities may not show outward signs.
- **Permits must be displayed:** If you have a valid permit, please ensure it is clearly visible in your vehicle's windscreen. Some individuals may have valid permits that are not always displayed.
- **Cooperation is key:** We rely on everyone's cooperation to ensure these spaces are available for those who need them.

We understand that parking can be challenging, but we ask that you be considerate of others and refrain from parking in accessible spaces unless you have a valid permit.

Thank you for your understanding and cooperation in making our school accessible for everyone.

** Engines Off **

To help reduce air pollution, noise levels, and respect our neighbour's, please remember to turn off your engine while waiting to drop off or pick up your child. Thank you for your cooperation.

SIXTH FORM UPDATE

** Football Academy Update**

We are incredibly excited about the upcoming Spain tour this June, continuing our tradition of providing amazing experiences for our football academy students! Our "Football Futures" program is all about developing talent and providing incredible opportunities. Get ready for more unforgettable moments!

Check out the Spain tour brochure [[KOMM MIT INTERNATIONAL](#)] to see what's coming up!



FOOTBALL FUTURES
SUPPORT WHERE YOU NEED IT MOST



Artsmark
Gold Award
Awarded by Arts
Council England



GOLD SCHOOL 2020

ON TRACK TO EXCELLENCE

A member of Swale Academies Trust

Registered Office: Ashdown House, Johnson Road, Sittingbourne, ME10 2JS

Registered in England No. 07344732

** Year 11 Sixth Form Taster Morning **

Calling all Year 11 pupils interested in joining **TWS Sixth Form in September 2025!**

We warmly invite you to our **Taster Morning on Tuesday, July 1st, from 9:30 AM to 12:00 PM.**

This event is highly recommended, especially if you've already made us your first choice or are still exploring your options. It's a fantastic chance to experience life in our Sixth Form!

Here's what you can expect:

- A welcoming introduction to Sixth Form life and our wide range of subjects.
- The opportunity to meet our dedicated teachers.
- Engaging team-building sessions and icebreakers to help you connect with future classmates.
- Refreshments will be provided.

Please indicate your attendance via Kent Choices, or for more information, feel free to contact us at tws_sixthform@swale.at

We look forward to welcoming you!



THIS WEEK SO FAR...

** The Pen is Mightier Than the Sword! - KS3 Students Explore Poetry **

On Wednesday, June 11th, a fantastic group of Key Stage Three students immersed themselves in a two-hour Poetry Writing Workshop, expertly run by The Canterbury Festival!

Students thoroughly enjoyed exploring this year's compelling theme: "The Pen is Mightier Than the Sword." They delved into images of revenge in classic and modern art, honed their skills in drafting and editing poetry for maximum impact and creatively played with form, punctuation, and language.



Inspired by the workshop, students of The Whitstable School are now invited to enter the Canterbury Festival Poetry Competition!

The competition closes on **July 21st**. More information on how to enter will be shared in upcoming English lessons.

**** Recognise Excellence: Nominate Your Teacher! ****

Behind every student's success is often an inspiring teacher. Does a particular teacher come to mind who has made a significant impact, offered incredible support or ignited a passion for learning in you or your child?

We believe in celebrating the exceptional dedication of our teaching staff! By taking a moment to nominate a teacher, you help us acknowledge their hard work and profound influence on our school community.

Your nomination highlights their commitment and ensures their efforts don't go unnoticed.

Find out how to nominate your deserving teacher here:

<https://thankateacher.co.uk/national-thank-a-teacher-day/>

Let's work together to celebrate the heart of our school



**** TRACK Excellence Raffle Winners Announced! ****

Each Wednesday, the school will run a 'TRACK Excellence' raffle with two prizes for students. To enter, students just have to have seven or more positive signatures over the two weeks. Students with negative signatures are still able to participate.

This week's winners are:

Noah and Casper (Year 8)

We've teamed up with local businesses for amazing rewards.

This week's prize is vouchers for local book store:

Tales on Moon Lane.



Artsmark
Gold Award
Awarded by Arts
Council England



GOLD SCHOOL 2020

ON TRACK TO EXCELLENCE

A member of Swale Academies Trust

Registered Office: Ashdown House, Johnson Road, Sittingbourne, ME10 2JS

Registered in England No. 07344732

**** Book of Commendation- Celebrating Student Success! ****

We are pleased to announce the following students have been recognised for their exceptional work and have been added to the Book of Commendation.

Science:

- **Honey, Isla and Ellena (Year 8)** for their creative paper skeleton.
- **Amelia (Year 7)** for creative science project book.

Photography:

- **Daisy (Year 10)** for her amazing photography portfolio.

Food technology:

- **Ruben (Year 8)** for great work in Food Tech.

English:

- **Lucy (Year 10)** for well-written homework essay.
- **Matt and Grace (Year 7)** for recreating Romeo and Juliet script.

Maths:

- **Camille, Lottie, Zak, Holly, Zak B, Jack, William, Scarlett, Amelia, Emily, Albert (Year 7)** for their excellent decimal work.

Spanish:

- **Kian, Blake, Hayden, Thea, Caitlin, Satefan (Year 9)** for beautiful Spanish posters on Spanish-speaking countries.
- **Charis (Year 9)** for well-written revision work in Spanish.

Statistics:

- **Hayden (Year 10)** for very well-presented revision poster.



Artsmark
Gold Award
Awarded by Arts
Council England



GOLD
SCHOOL
2020

ON TRACK TO EXCELLENCE

A member of Swale Academies Trust

Registered Office: Ashdown House, Johnson Road, Sittingbourne, ME10 2JS

Registered in England No. 07344732



Artsmark Gold Award
Awarded by Arts Council England



ON TRACK TO EXCELLENCE

A member of Swale Academies Trust

Registered Office: Ashdown House, Johnson Road, Sittingbourne, ME10 2JS

Registered in England No. 07344732

**** Duke of Edinburgh Bronze Expedition Success! ****

Despite the rather challenging weather, they made it! Our Year 9 students truly excelled during their Duke of Edinburgh Bronze expedition this past weekend. Building a campfire in the rain was just one of the many challenges they overcame with incredible spirit. We are so proud of all the teams, who were supportive, upbeat, and exceptionally well-behaved throughout the entire weekend. They successfully completed their 30 km walk, navigated their way skilfully, built their own accommodation, cooked their dinners, and even did the washing up!

Huge congratulations to all the students for their resilience and teamwork – an outstanding achievement! And a massive **thank you to all the staff** who made this challenging but rewarding expedition possible!



Artsmark Gold Award
Awarded by Arts Council England



GOLD SCHOOL 2020

ON TRACK TO EXCELLENCE

A member of Swale Academies Trust

Registered Office: Ashdown House, Johnson Road, Sittingbourne, ME10 2JS

Registered in England No. 07344732

**** Year 10 Food Preparation & Nutrition: Italian Culinary Creations! ****

Our Year 10 Food Preparation & Nutrition students have made a stunning start to their Mock NEA2 project!

Tasked with creating a portfolio of written work and a range of dishes based on the theme of Italian cuisine, our students have demonstrated exceptional organization. They've meticulously researched their own recipes, efficiently organized their ingredients, and presented their work with impressive accuracy and finesse.

This week, the focus was on bread, and we're delighted to share some fantastic examples of their work. Well done, Year 10!



Artsmark Gold Award
Awarded by Arts Council England



GOLD SCHOOL 2020

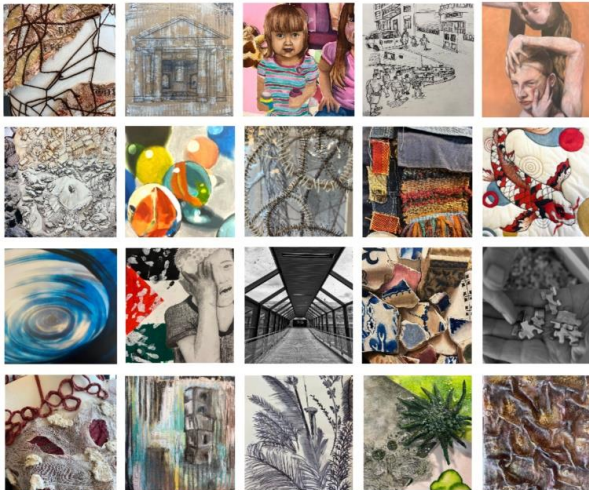
ON TRACK TO EXCELLENCE

A member of Swale Academies Trust

Registered Office: Ashdown House, Johnson Road, Sittingbourne, ME10 2JS

Registered in England No. 07344732

The Whitstable School
Visual Art Exhibition



Open: 25th June - 30th June 10am - 4pm
At Creative Space Gallery
1 Red Lion Lane, Whitstable CT5 1FG

**** TWS Visual Arts Exhibition ****

The Art department would like to invite you to our current Art Exhibition at Creative Space Gallery in Whitstable High Street. Open from 10am - 4pm the exhibition will run from 25th - 30th June.

**** Year 12 Completes Driver Awareness Course! ****

Our Year 12 students have successfully completed their five-session Driver Awareness Course with KCC this week! Students actively engaged in interactive Q&A sessions with our external speakers, learning how to be responsible drivers and passengers. The course truly opened their eyes to the realities of road safety. One pupil shared, "Hearing from an ex-police officer about the laws on driving made this really impactful. It also made me excited to drive whilst realising that you have to earn your right to a licence.

We're incredibly proud of their commitment to becoming safer road users!



ON TRACK TO EXCELLENCE

A member of Swale Academies Trust

Registered Office: Ashdown House, Johnson Road, Sittingbourne, ME10 2JS

Registered in England No. 07344732

** Young people attending Riverside Youth Club! **

Starting from Thursday, June 12th onwards, all young people must have a completed parental consent and registration form to access the Riverside Youth Club [<https://www.riversideuk.org/youth>]

Any young person who is not registered will unfortunately be turned away until a form is completed.

Forms can be requested by emailing Abbie at: abbie@riversideuk.org

The Youth Club takes place weekly on a Thursday between 7:00 PM and 8:30 PM.

Did you know? Abbie also visits our school weekly as a youth mentor, supporting a range of pupils, and runs a weekly games club at lunchtime!



UPCOMING EVENTS

Generation FOMO - A Must-See Play!

We're excited to invite you to a crucial and timely event at our school: "**Generation FOMO**," a powerful verbatim play exploring the impact of social media and smartphones on young people's lives and mental well-being.

Mark your calendars!

📅 Monday, June 30th

🕒 7:00 PM

📍 The Whitstable School

Created by Portrait Theatre, this play uses the authentic voices of young people, parents, and professionals to provide an unfiltered look at the digital world our children navigate.



Sign up for your tickets by June 25th [ticket source](#). Don't miss this vital conversation!



Artsmark
Gold Award
Awarded by Arts
Council England



GOLD
SCHOOL
2020

ON TRACK TO EXCELLENCE

A member of Swale Academies Trust

Registered Office: Ashdown House, Johnson Road, Sittingbourne, ME10 2JS

Registered in England No. 07344732

**** Nominate Our Library for National Book Tokens! ****



We've been alerted to an exciting opportunity from National Book Tokens that could bring a fantastic boost to our school library and we'd love your help!

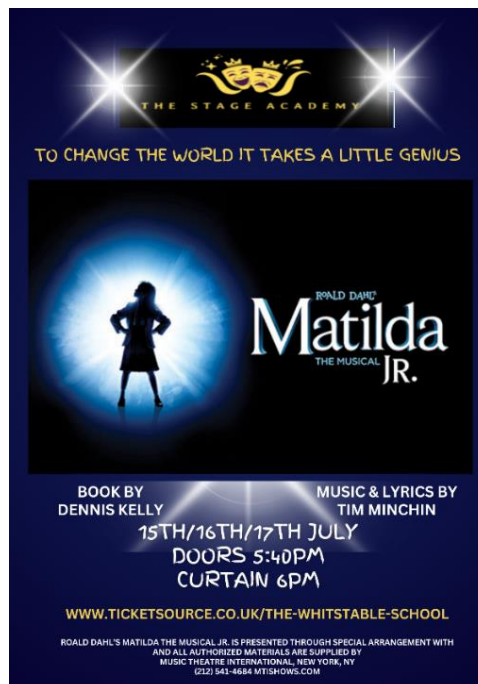
We're encouraging everyone in our school community – parents, carers, students and staff – to take a moment and **nominate The Whitstable School library!**

You can complete the nomination yourself via the National Book Tokens [website](#).

Let's work together to give our library the best chance to win some new resources for our students!

Don't forget to get your tickets now for our school's spectacular production of Matilda!
It's going to be amazing.

Tickets via: [Ticket Source](#)



Artsmark Gold Award
 Awarded by Arts Council England



ON TRACK TO EXCELLENCE

A member of Swale Academies Trust

Registered Office: Ashdown House, Johnson Road, Sittingbourne, ME10 2JS

Registered in England No. 07344732

NOTICE BOARD



THE HILL 112
MEMORIAL FOUNDATION
Charity No. 1181345

RAF MANSTON HISTORY MUSEUM
Charity No. 1179982

COMICON
AT THE MUSEUM
JUNE 14-15 2025
10AM - 4PM

Cosplay Competitions
All Ages

NORMAL MUSEUM ENTRY FEE APPLIES

ANY QUESTIONS EMAIL INFO@RAFMANSTON.CO.UK

@RAF Manston History Museum
WHAT THREE WORDS - REMARRIED.MORNINGS.PAVE

SUBJECT TO CHANGE DUE TO UNFORESEEN CIRCUMSTANCES INCLUDING, BUT NOT LIMITED TO, WEATHER CONDITIONS, MECHANICAL BREAKDOWNS AND SHORTAGE OF VOLUNTEERS AND/OR EXHIBITORS



**Artsmark
Gold Award**
Awarded by Arts
Council England



**GOLD
SCHOOL
2020**

ON TRACK TO EXCELLENCE

A member of Swale Academies Trust

Registered Office: Ashdown House, Johnson Road, Sittingbourne, ME10 2JS

Registered in England No. 07344732



SEND Support and Parenting Support Drop-In

For all parents/carers, young people, and children (0-25 years) with special educational needs and disabilities (diagnosed and undiagnosed) and for any parents/carers needing general parenting advice.



SEND Support

We can help you with understanding your child's needs, and offer tips and strategies to help at home, signposting to local SEND support services and getting the best from your child's education.

General Parenting

We can help you with understanding your child's needs, managing behaviour, and offering different strategies to support with parenting at home.

Kingsmead Family Hub

DATE: 1st Friday of the month:

- 4th April
- 2nd May
- 6th June
- 4th July
- 1st August
- 5th September
- 3rd October
- 7th November
- 5th December
- 2nd January
- 6th February
- 6th March

TIME: 9:30am - 11:30am

VENUE: Kingsmead Road, Canterbury, CT2 7PH

Whitstable Family Hub

DATE: 2nd Tuesday of the month:

- 8th April
- 13th May
- 10th June
- 8th July
- 12th August
- 9th September
- 14th October
- 11th November
- 9th December
- 13th January
- 10th February
- 10th March

TIME: 9:30am - 11:30am

VENUE: Tower Parade, Whitstable, CT5 2BJ

Herne Bay Family Hub

DATE: 3rd Wednesday of the month:

- 16th April
- 21st May
- 18th June
- 16th July
- 20th August
- 17th September
- 15th October
- 19th November
- 17th December
- 21st January
- 18th February
- 18th March

TIME: 9:30am - 11:30am

VENUE: Memorial Park, Kings Road, Herne Bay, CT6 5RG

Visit your local Family Hub today

www.kent.gov.uk/familyhub



Artsmark Gold Award
Awarded by Arts Council England



GOLD SCHOOL 2020

ON TRACK TO EXCELLENCE

A member of Swale Academies Trust

Registered Office: Ashdown House, Johnson Road, Sittingbourne, ME10 2JS

Registered in England No. 07344732



What does caring look like for you?

Kent Young Carers

“ MY MUMS DISABLED SO I DO EXTRA CHORES AROUND THE HOUSE, HELP TO COOK MEALS, AND HELP HER TO GET DRESSED AND OUT OF BED ”

My brother's autistic and sometimes needs help to calm down at night time when he gets angry

I help my Dad take his medication as he has MS. He's in hospital a lot so I worry about him and what he would do if I go to university

MY SISTER HAS MENTAL HEALTH PROBLEMS AND CRIES A LOT OF THE TIME. MY PARENTS HELP BUT I LIKE TO TALK AND HANG OUT WITH HER TO HELP CHEER HER UP

YOUNG CARERS AT THE WHITSTABLE SCHOOL

Did you know that The Whitstable School now has a Young Carers Support Group running every Wednesday lunchtime in GZ2? This group is run by Mrs James and is open to all Young Carers (registered or non-registered) caring for a family member with; a long term illness, disability, poor mental health or substance misuse. Whether it is to just sit and listen, talk and share or just be in the company of other young people with caring responsibilities, we are here!

What is a Young Carer?

Young Carers provide unpaid care for a family member or friend with an illness, disability, mental health issue, or addiction. They support the cared-for and other family members with practical tasks, physical care, and emotional support, whilst at the same time trying to live their own life.

Do you think that your child is a Young Carer? Please contact Mrs James for more info or give Kent Young Carers a call on 0300 111 1110, email youngcarers@imago.community or take a look at the Kent Young Carers website www.imago.community



THE WHITSTABLE SCHOOL BREAKFAST CLUB

Start Your Day Right

Come to the Restaurant from 8:20 - 8:35 everyday
Bacon or sausage rolls, croissants, waffles, pain au chocolate and pain au raisin Prices from £1.55
Free porridge available to all students everyday



Artsmark Gold Award
Awarded by Arts Council England



GOLD SCHOOL 2020

ON TRACK TO EXCELLENCE

A member of Swale Academies Trust

Registered Office: Ashdown House, Johnson Road, Sittingbourne, ME10 2JS

Registered in England No. 07344732

At The National College, our WakeUpWednesday guides empower and equip parents, carers and educators with the confidence and practical skills to be able to have informed and age-appropriate conversations with children about online safety, mental health and wellbeing, and climate change. Formerly delivered by National Online Safety, these guides now address wider topics and themes. For further guides, hints and tips, please visit nationalcollege.com.

What Parents & Educators Need to Know about GENERATIVE AI SAFETY

Generative AI tools – such as ChatGPT – are now commonly used by children. In fact, 3 in 4 pupils in the 2024 Annual Literacy Survey reported using generative AI, up from just 2 in 5 the previous year. While these tools can boost learning and creativity, they also raise concerns around misinformation, privacy and overuse. This guide explores the key risks and how to support safe use.

WHAT ARE THE RISKS?

- MISINFORMATION AND ACCURACY**
Generative AI can sometimes produce false or misleading content. Children – and even adults – may assume the information is accurate and trustworthy. It's vital to teach children to critically assess all information, even when it comes from AI.
- EXPOSURE TO INAPPROPRIATE CONTENT**
Because generative AI is trained on vast datasets from across the internet, there is a chance it may occasionally generate harmful or inappropriate content. Without supervision, children could encounter disturbing or sensitive material. Active monitoring and clear usage boundaries can help reduce this risk.
- PRIVACY AND DATA SECURITY**
Some AI tools ask for personal details or store users' interactions. If privacy settings are not correctly configured, children's personal data could be exposed or misused. Teaching good digital hygiene and setting strong privacy controls is essential for protecting children online.
- REDUCED CRITICAL THINKING**
Relying too heavily on AI-generated responses may reduce children's willingness to think independently. If they consistently use AI to solve problems or complete tasks, it could impact their ability to reason, analyse and form their own ideas. Encouraging thoughtful reflection is key.
- DIGITAL DEPENDENCY**
Regular use of generative AI can contribute to increased screen time and less real-world interaction. If left unmanaged, it may affect physical activity levels, sleep, and social development. Striking a healthy balance between online and offline activities is important for wellbeing.
- UNCLEAR ETHICAL BOUNDARIES**
Children may not fully understand the ethical implications of using AI to complete homework or creative tasks. This can lead to unintentional plagiarism or dishonest academic practices. Conversations around responsible use and academic honesty are crucial.

Advice for Parents & Educators

- ESTABLISH CLEAR GUIDELINES**
Set clear, age-appropriate rules for when and how generative AI can be used. Reinforce these regularly to help children develop a healthy, respectful and informed relationship with the technology.
- PROMOTE ACTIVE SUPERVISION**
Keep an eye on how the children in your care use AI tools. Check in regularly to ensure they're using them appropriately and be ready to step in if something doesn't feel right.
- ENCOURAGE CRITICAL EVALUATION**
Help children to question the accuracy of AI-generated information and seek out additional trusted sources. This builds essential digital literacy skills and supports better decision-making.
- ENHANCE PRIVACY AWARENESS**
Talk to children about the importance of keeping personal information private. Make sure privacy settings are in place and explain how data shared with AI tools could be used.

Meet Our Expert
Brendan O'Keefe, Deputy Headteacher and Director of Digital Strategy at Eaton House Schools, has extensive expertise in digital safety, safeguarding, and generative AI in education. As an author and speaker on digital literacy and online safety for institutions such as The National College, Brendan guides parents and educators in creating safe digital learning environments.

#WakeUpWednesday The National College

@wake_up_weds | /www.thenationalcollege | @wake.up.wednesday | @wake.up.weds

Users of this guide do so at their own discretion. No liability is entered into. Current as of the date of release: 11.09.2025

For more updates and events, please visit our website and follow us on X and Facebook.

<https://www.thewhitstableschool.org.uk/>
<https://www.facebook.com/TheWhitstableSchool>
<https://x.com/TheWhitSchool>

Best Wishes
The Whitstable School Team



Artsmark
Gold Award
Awarded by Arts
Council England



ON TRACK TO EXCELLENCE

A member of Swale Academies Trust

Registered Office: Ashdown House, Johnson Road, Sittingbourne, ME10 2JS

Registered in England No. 07344732