

27 June 2025

# NEWSLETTER

Dear Families,

This week featured inspiring events like International Women in Engineering Day and successful practical assessments for Year 9 Cooking & Nutrition students, while the STEM Academy celebrated their year-long research at the IRIS Conference. Read on for more details and highlights!

## Key Dates:

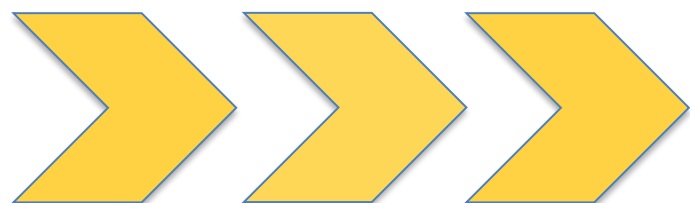
- 10 and 11 July - School Immunisations for Year 8 students
- 18 July 2025- Sports day
- 22 July 2025 - Term 6 Ends and Non-Uniform day. Students finish at 12:45

## Update

### TWS Matilda the Musical

Don't miss out on a fantastic show!  
Tickets are now on sale for our school's production of Matilda! Come along and support our talented students!

[Ticket source](#)



**NEXT WEEK IS**  
**WEEK A**  
**TIMETABLE**



**Artsmark  
Gold Award**  
Awarded by Arts  
Council England



**GOLD  
SCHOOL  
2020**

**ON TRACK TO EXCELLENCE**

**A member of Swale Academies Trust**

Registered Office: Ashdown House, Johnson Road, Sittingbourne, ME10 2JS

Registered in England No. 07344732

## UPCOMING EVENTS

### ☀️ Our Art Exhibition is NOW OPEN & Looks Fantastic! ☀️

The Art Department is thrilled to invite you to our vibrant current Art Exhibition!

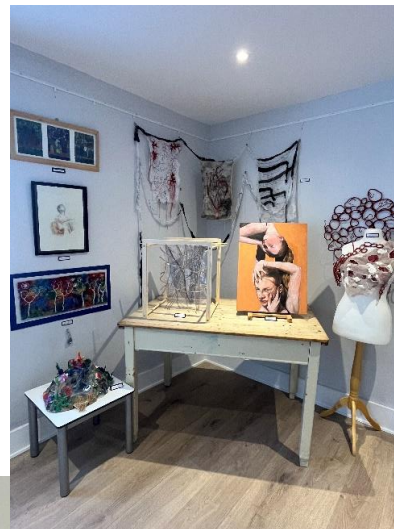
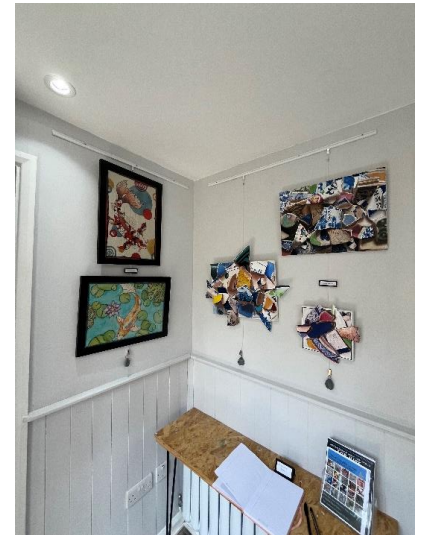
**Location:**

Creative Space Gallery  
1 Red Lion Lane  
Whitstable, CT5 1FG

**Dates & Times:**

June 25th until June 30th.  
Opening times: 10:00 AM - 4:00 PM

Don't miss the opportunity to see the incredible talent of our students! Come and be inspired! We can't wait to see you there!



**Artsmark Gold Award**  
Awarded by Arts Council England



**GOLD SCHOOL 2020**

## ON TRACK TO EXCELLENCE

**A member of Swale Academies Trust**

Registered Office: Ashdown House, Johnson Road, Sittingbourne, ME10 2JS

Registered in England No. 07344732

## Generation FOMO - A Must-See Play! \*\*

We're excited to invite you to a crucial and timely event at our school: "**Generation FOMO**," a powerful verbatim play exploring the impact of social media and smartphones on young people's lives and mental well-being.

### Mark your calendars!

📅 **Monday, June 30th**

🕒 **7:00 PM**

📍 **The Whitstable School**



Created by Portrait Theatre, this play uses the authentic voices of young people, parents, and professionals to provide an unfiltered look at the digital world our children navigate.

Sign up for your tickets via [ticket source](#). Don't miss this vital conversation!

## SIXTH FORM UPDATE

### \*\* Year 11 Sixth Form Taster Morning \*\*

Calling all Year 11 pupils interested in joining **TWS Sixth Form in September 2025!**

We warmly invite you to our **Taster Morning on Tuesday, July 1st, from 9:30 AM to 12:00 PM.**

This event is highly recommended, especially if you've already made us your first choice or are still exploring your options. It's a fantastic chance to experience life in our Sixth Form!

Here's what you can expect:

- A welcoming introduction to Sixth Form life and our wide range of subjects.
- The opportunity to meet our dedicated teachers.
- Engaging team-building sessions and icebreakers to help you connect with future classmates.
- Refreshments will be provided.



Please indicate your attendance via Kent Choices, or for more information, feel free to contact us at [tws\\_sixthform@swale.at](mailto:tws_sixthform@swale.at)

We look forward to welcoming you!

**\*\* KS3 Writing Competition: Identity! \*\***



Our newly elected Year 12 Academic Prefects have been busy launching an exciting writing competition for all Key Stage 3 students!

**Theme:** Identity

**Format:** Short Story

**Word Count:** 450-800 words

**Prizes:** A range of fantastic prizes are up for grabs!

**How to Enter:** Hand your entries in to your English teacher next week!

For more information, please ask your English teacher or inquire in the Sixth Form. Good luck, young writers.

**IMPORTANT INFORMATION**

**\*\* Uniform Donations & Lost Property Collection \*\***

As our 2025 leavers prepare for their next steps, we're sure many of you have old uniform items you no longer need. Let us help you clear some space in your wardrobes!

We would be incredibly grateful if you could **return any unwanted, clean items of school uniform (including ties)** to help our current students. Please kindly leave any donations at school reception. Your contribution makes a real difference!

**\*\* Lost Property Collection \*\***

All unclaimed lost property items will be displayed in reception from **Monday, July 7th, to Thursday, July 10th, 2025.**

Parents and carers are welcome to collect any items belonging to their children between **9:30 AM and 3:30 PM** on these dates.

**Important:** Items left unclaimed after **Thursday, July 10th, 2025,** will be donated to our uniform cupboard. Any non-uniform items will be donated to a local charity. Please ensure you collect your child's belongings by the deadline.



**Artsmark Gold Award**  
Awarded by Arts Council England



**GOLD SCHOOL 2020**

**ON TRACK TO EXCELLENCE**

**A member of Swale Academies Trust**

Registered Office: Ashdown House, Johnson Road, Sittingbourne, ME10 2JS

Registered in England No. 07344732

**\*\* Examination Results Collection \*\***

Dear Parents/Carers,

This letter outlines the arrangements for the collection of **International Baccalaureate (IB), A Level, and BTEC** qualification results.

**International Baccalaureate (IB) Results**

- **Date:** Monday, July 7th, 2025
- **Time:** 9:00 AM - 10:00 AM
- **Location:** Study Room
- **Contact:** Results will be available from Ms. Simons.

**A Level and BTEC Results**

- **Date:** Thursday, August 14th, 2025
- **Time:** 8:00 AM - 9:30 AM
- **Location:** The Stage area

**Support on A Level Results Day**

We understand that results days can be an anxious time. To ensure all students receive the support they need, our **UCAS Adviser** and **Careers Adviser** will be available on A Level results day. They will be on hand to provide guidance, support, and advice on:

- University applications
- Clearing
- Future career pathways

We look forward to celebrating your child's achievements and supporting them in their next steps. Should you have any questions, please do not hesitate to contact **Mrs. Simons** at [tw\\_s\\_sixthform@swale.at](mailto:tw_s_sixthform@swale.at).

Kind regards,

Amy Simons, Head of Sixth Form and IB Coordinator, The Whitstable School

## THIS WEEK SO FAR...

### \*\* TRACK Excellence Raffle Winners Announced! \*\*

Each Wednesday, the school will run a 'TRACK Excellence' raffle with two prizes for students. To enter, students just have to have seven or more positive signatures over the two weeks. Students with negative signatures are still able to participate.

This week's winners are:

**Teddy (Year 9) and Leo (Year 7)**

We've teamed up with local businesses for amazing rewards.

This week's prize is vouchers for local book store: **Tales on Moon Lane.**



Students with their prizes in the TRACK Excellence raffle.



### \*\* Book of Commendation- Celebrating Student Success! \*\*

We are pleased to announce the following students have been recognised for their exceptional work and have been added to the Book of Commendation.

#### Science:

- **Yahya, Jacob, Harry, Henry, Max (Year 8)** for their excellent work on changes in the atmosphere.
- **Sophia (Year 8)** for her well-written work on biodiversity.

#### Art:

- **Indie, Seb, Nancy, and April (Year 8)** for their beautiful posters created with stencils.
- **Ava, Tahsin, Harry, and Harrison (Year 8)** for their creative weaving in textiles.
- **Oscar and Isabella (Year 8)** for their beautiful artworks.

#### Food Technology:

- **Albert and Marley (Year 8)** for baking delicious bread in Food Tech.



Artsmark  
Gold Award  
Awarded by Arts  
Council England



## ON TRACK TO EXCELLENCE

**A member of Swale Academies Trust**

Registered Office: Ashdown House, Johnson Road, Sittingbourne, ME10 2JS

Registered in England No. 07344732

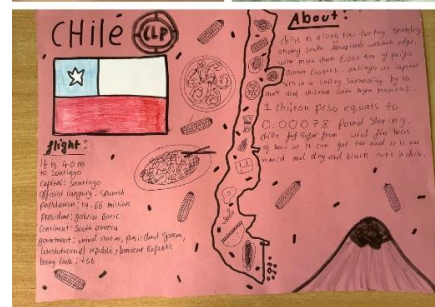
**English:**

- **Betty (Year 8)** for a very well-written paragraph about life as a teenager.

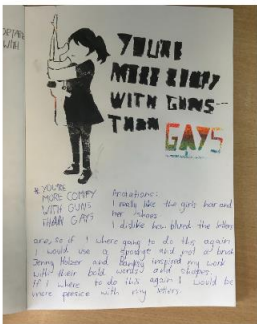
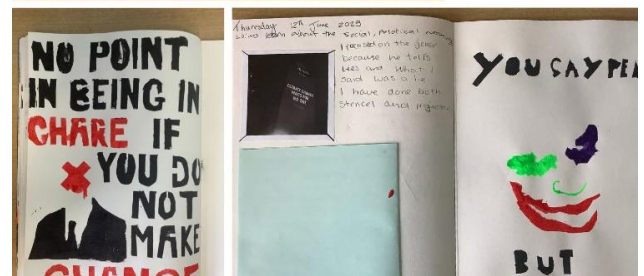
**Spanish:**

- **Scarlett C., Jess and Scarlett R. (Year 7)** and **Caitlyn and Connie (Year 9)** for their very creative posters about Spanish-speaking countries.

Keep up the fantastic work everyone!



“  
Book of  
Commendation  
”



Artsmark  
Gold Award  
Awarded by Arts  
Council England



GOLD SCHOOL 2020

ON TRACK TO EXCELLENCE

A member of Swale Academies Trust

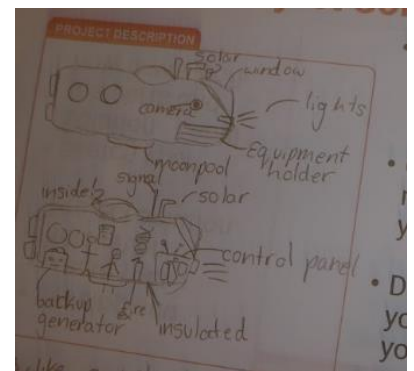
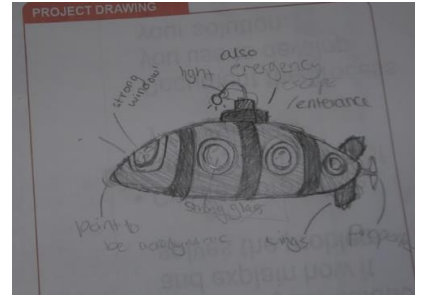
Registered Office: Ashdown House, Johnson Road, Sittingbourne, ME10 2JS

Registered in England No. 07344732

**\*\* Inspiring Future Engineers! \*\***

On Monday, June 23rd, 100 girls from Years 7-9 celebrated International Women in Engineering Day (IWED) by becoming Engineers for the day! With a water-based theme, they tackled challenging problems for marine biologists and oceanographers, inventing new solutions and completing a building challenge. Medals and trophies were awarded to the best teams. What an inspiring day!

A big thank you to Ms. Dash for organising such a fantastic event!



**\*\* STEM Academy Shines at IRIS Conference 2025! \*\***

Our STEM Academy proudly showcased their year-long scientific research at the Institute of Research in Schools (IRIS) Conference. Our students, the youngest researchers there, bravely presented first to an audience of 800, truly shining! They fielded questions, explored incredible academic posters from KS3 to A-Level, and were inspired by the outstanding quality of research. The day concluded with an inspiring keynote from Dr. Olivia Jones, who shared her journey working with telescopes like James Webb and Hubble.

A fantastic start to our students' research journey as IRIS members!



**ON TRACK TO EXCELLENCE**

**A member of Swale Academies Trust**

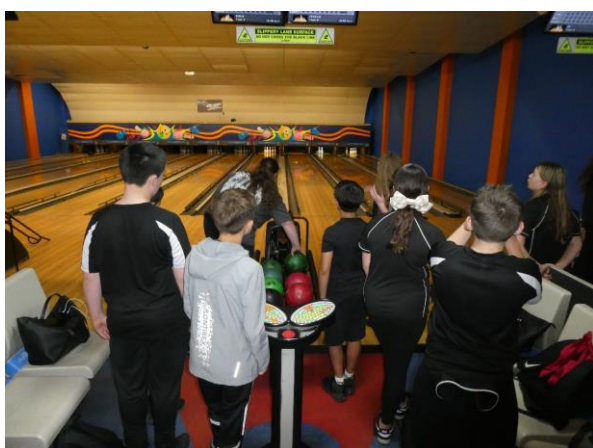
Registered Office: Ashdown House, Johnson Road, Sittingbourne, ME10 2JS

Registered in England No. 07344732

**\*\* Year 10 D&T Students Find Inspiration in London! \*\***

Last Thursday, our Year 10 Design and Technology students embarked on a fascinating (and hot!) trip to London! They immersed themselves in the world of design, visiting The V&A, the Design Museum, and Japan House in Kensington. Students had the opportunity to explore a diverse range of products across all areas of design, including fashion, product, graphic design, architecture, and intricate carpentry.

A highlight of the day was a guided tour of Japan House, where students gained unique insights. They were able to deconstruct Japanese joints, observe a range of specialist tools, and feel a variety of different timbers. Overall, it was a hot but incredibly fascinating trip that we hope has provided ample inspiration for their NEA projects!



**\*\* Reward Trip: Year 7 and Year 12 Hit the Lanes! \*\***

As a 'thank you' to our wonderful Year 12 peer readers and a 'well done' to our Year 7 pupils for their fantastic hard work this year, a group of students enjoyed a fun-filled visit to the bowling alley in Whitstable!

Things got a bit competitive, with pupils scoring strikes left, right, and centre! A big thank you goes to Mr. Poole and Mr. Lane for accompanying the group and making it such a success.



Artsmark  
Gold Award  
Awarded by Arts  
Council England



GOLD  
SCHOOL  
2020

**ON TRACK TO EXCELLENCE**

**A member of Swale Academies Trust**

Registered Office: Ashdown House, Johnson Road, Sittingbourne, ME10 2JS

Registered in England No. 07344732

**\*\* Year 9 Cooking & Nutrition: Swiss Roll Success! \*\***

Our Year 9 Cooking & Nutrition students are wrapping up their final practical assessments with delicious success! They have been busy producing fantastic **Swiss rolls**, demonstrating impressive skills. Many students have shown great independent practical abilities and a keen eye for precision and accuracy. These are vital skills that will undoubtedly set them up well for their GCSEs! Well done, Year 9!



**\*\* Year 10 History Students Step Back in Time at Hampton Court Palace! \*\***

Our Year 10 History students had an exciting and enriching day out at Hampton Court Palace! They explored the magnificent gardens, historic chambers, and bustling kitchens of King Henry VIII and George I.

This unique excursion provided an incredible opportunity for students to bring their GCSE learning to life! By exploring the palace, initially built by Cardinal Thomas Wolsey, they were able to connect with his pivotal role in foreign and domestic policy and truly grasp the rich history of the Tudor era.

What a fantastic way to experience history first-hand!



**Artsmark Gold Award**  
Awarded by Arts Council England



**GOLD SCHOOL 2020**

**ON TRACK TO EXCELLENCE**

**A member of Swale Academies Trust**

Registered Office: Ashdown House, Johnson Road, Sittingbourne, ME10 2JS

Registered in England No. 07344732

## NOTICE BOARD

### Explore the World with A-Level Geography!

Are you in Year 11 and interested in studying A-Level Geography with us? Dive deeper into fascinating topics like climate change, urban development, natural hazards, and global inequalities. Geography offers a unique blend of science and humanities, providing you with critical thinking skills and a global perspective. Discover how humans interact with their environment and tackle some of the world's most pressing issues. It's a fantastic choice for curious minds!


Find out more about our A-Level Geography course and how to apply on our website: <https://www.thewhitstableschool.org.uk/>  
You can also get more information by sending an email to [admin\\_tws@swale.at](mailto:admin_tws@swale.at).



Come and study Geography at The Whitstable School!

### The human geography course (at a glance)

Please have a look at the printed course specification for more detail on the AQA course

<p><b><u>Global systems and global governance</u></b></p> <p style="font-size: x-small;">Globalisation, the economic, political and social changes associated with technology and other key feature of global economy and society in recent decades.</p>		<p><b><u>Changing places</u></b></p> <p style="font-size: x-small;">Students acknowledge and engage with how places are known and experienced, how their character is appreciated, the factors and processes which impact upon places and how they change and develop over time.</p>
<p><b><u>Contemporary urban environments</u></b></p> <p style="font-size: x-small;">Optional section of the AQA specification.</p> <p style="font-size: x-small;">Focuses on urban growth and change which present significant environmental and social challenges for human populations.</p>	<p><b><u>Resource security.</u></b></p> <p style="font-size: x-small;">Optional section of the AQA specification.</p> <p style="font-size: x-small;">Focuses on the large-scale exploitation of unevenly distributed natural resources, which is one of the defining features of the present era.</p>	<p><b><u>Population and the environment</u></b></p> <p style="font-size: x-small;">Optional section of the AQA specification.</p> <p style="font-size: x-small;">Relationships between physical geography and the environmental context for human population characteristics and change.</p>



Come and study Geography at The Whitstable School!



Come and study Geography at The Whitstable School!

### The physical geography course (at a glance)

Please have a look at the printed course specification for more detail on the AQA course

<p><b><u>Water and carbon cycles</u></b></p> <p style="font-size: x-small;">Understand the major stores of water and carbon and the dynamic cyclical relationships associated with them.</p>	<p><b><u>Glacial systems and landscapes</u></b></p> <p style="font-size: x-small;">Glacial landscapes are fascinating and stunningly beautiful. They continue to develop through contemporary processes but offer a window to past climatic conditions associated with the Pleistocene era.</p>	<p><b><u>Coastal systems and landscapes</u></b></p> <p style="font-size: x-small;">Learn about dynamic environments where landscapes develop by the interaction of winds, waves, currents and terrestrial and marine sediments.</p>
<p><b><u>Hazards</u></b></p> <p style="font-size: x-small;">Optional section of the AQA specification.</p> <p style="font-size: x-small;">Study the lithosphere and atmosphere, which intermittently present natural hazards to human populations, often in dramatic and sometimes catastrophic fashion.</p>	<p><b><u>Hot desert systems and landscapes</u></b></p> <p style="font-size: x-small;">Content fosters informed appreciation of the beauty and diversity of deserts and the challenges they present as human habitats.</p>	<p><b><u>Ecosystems under stress</u></b></p> <p style="font-size: x-small;">Optional section of the AQA specification.</p> <p style="font-size: x-small;">Study the impacts of population growth and economic development on ecosystems at various scales and issues relating to biodiversity and sustainability.</p>



Come and study Geography at The Whitstable School!



**Artsmark Gold Award**  
Awarded by Arts Council England



**ON TRACK TO EXCELLENCE**

**A member of Swale Academies Trust**

Registered Office: Ashdown House, Johnson Road, Sittingbourne, ME10 2JS

Registered in England No. 07344732



**What does caring look like for you?**

**Kent Young Carers**

“ MY MUMS DISABLED SO I DO EXTRA CHORES AROUND THE HOUSE, HELP TO COOK MEALS, AND HELP HER TO GET DRESSED AND OUT OF BED ”

My brother's autistic and sometimes needs help to calm down at night time when he gets angry

I help my Dad take his medication as he has MS. He's in hospital a lot so I worry about him and what he would do if I go to university

MY SISTER HAS MENTAL HEALTH PROBLEMS AND CRIES A LOT OF THE TIME. MY PARENTS HELP BUT I LIKE TO TALK AND HANG OUT WITH HER TO HELP CHEER HER UP

## YOUNG CARERS AT THE WHITSTABLE SCHOOL

Did you know that The Whitstable School now has a Young Carers Support Group running every Wednesday lunchtime in GZ2? This group is run by Mrs James and is open to all Young Carers (registered or non-registered) caring for a family member with; a long term illness, disability, poor mental health or substance misuse. Whether it is to just sit and listen, talk and share or just be in the company of other young people with caring responsibilities, we are here!

### What is a Young Carer?

Young Carers provide unpaid care for a family member or friend with an illness, disability, mental health issue, or addiction. They support the cared-for and other family members with practical tasks, physical care, and emotional support, whilst at the same time trying to live their own life.

Do you think that your child is a Young Carer? Please contact Mrs James for more info or give Kent Young Carers a call on 0300 111 1110, email [youngcarers@imago.community](mailto:youngcarers@imago.community) or take a look at the Kent Young Carers website [www.imago.community](http://www.imago.community)



**THE WHITSTABLE SCHOOL BREAKFAST CLUB**

## Start Your Day Right

Come to the Restaurant from 8:20 - 8:35 everyday  
Bacon or sausage rolls, croissants, waffles, pain au chocolate and pain au raisin Prices from £1.55  
Free porridge available to all students everyday



**Artsmark Gold Award**  
Awarded by Arts Council England



**GOLD SCHOOL 2020**

## ON TRACK TO EXCELLENCE

**A member of Swale Academies Trust**

Registered Office: Ashdown House, Johnson Road, Sittingbourne, ME10 2JS

Registered in England No. 07344732



At The National College, our **WakeUpWednesday** guides empower and equip parents, carers and educators with the confidence and practical skills to be able to have informed and age-appropriate conversations with children about online safety, mental health and wellbeing, and climate change. Formerly delivered by National Online Safety, these guides now address wider topics and themes. For further guides, hints and tips, please visit [nationalcollege.com](https://nationalcollege.com).

## What Parents & Educators Need to Know about NINTENDO SWITCH 2

Nintendo launched its Switch 2 games console in early June 2025 – its first new console in eight years. While it builds on the original's success by remaining compatible with certain existing games, it also adds powerful hardware and new features like GameChat and a USB-C camera. As more children look to upgrade, it's important to understand how this new console might affect their play and safety.

**WHAT ARE THE RISKS?**

**EASIER TO ACCESS MATURE CONTENT** **18 CENSORED**

Despite Nintendo's reputation for family-friendly titles, mature games like *Cyberpunk 2077* and *Hitman* have been released onto the platform. With the Switch 2's improved performance, developers will be able to port even more mature-rated games. These may appeal to children due to their popularity, but they contain content that is highly unsuitable for young audiences.

**IN-APP & GAME STORE PURCHASES**

The Nintendo eShop enables purchases with just a few taps. If payment details are saved and PIN protection is disabled, children may unknowingly make costly purchases – including game add-ons, cosmetic items or entire new releases – without parental approval.

**UNRESTRICTED ONLINE PLAY IN SOME GAMES**

While GameChat is one feature, Switch 2 also connects to the broader Nintendo Switch Online service. Many free-to-play titles like *Fortnite* or *Splatoon 4* allow voice or text chat with strangers unless chat settings are adjusted, meaning children could encounter inappropriate language or unwanted contact.

**GAMECHAT & REAL-TIME VOICE COMMUNICATION**

GameChat enables live chatting with up to 12 people, even across different games, with optional video and screen-sharing. Though children under 16 are restricted to chatting only with approved friends, the sheer interactivity could raise privacy concerns or create pressure to remain online longer.

**CAMERA COMPATIBILITY & PRIVACY CONCERNS**

The optional USB-C camera supports video calling and facial overlays in games; however, this also raises the risk of cyberbullying or the unwanted sharing of personal images. The camera can be disabled, removed or covered, and parental controls are essential to manage how and when it is used.

**POWERFUL PULL OF FAMILIAR CHARACTERS**

Nintendo's mascot, Mario – along with *Pikachu*, *Donkey Kong* and others – remains hugely appealing to younger audiences, especially after the success of the recent film, *The Super Mario Bros. Movie* (2023). These beloved icons are central to Nintendo's branding and often feature in merchandising, adverts and in-game promotions, creating strong emotional attachments in children and a sense of urgency to keep up with their peers.

### Advice for Parents & Educators

**CHECK RATINGS & USE PARENTAL CONTROLS**

Every Switch and Switch 2 game comes with a PEGI age rating. Before buying one, ensure the content matches your child's age. Use the Nintendo Parental Controls app to monitor gameplay, set screen-time limits and manage friend requests.

**REVIEW FRIEND LISTS AND CHAT PERMISSIONS**

Child profiles are restricted to chatting with approved friends only, but it's good practice to regularly check their friend list and communication settings. Use the Parental Controls app to switch off voice or video chat if necessary.

**REMOVE OR RESTRICT PAYMENT METHODS**

Avoid accidental spending by unlinking credit cards from the device. Instead, consider adding funds via prepaid eShop cards or requiring a PIN for purchases. Some banking apps can also be set to approve transactions manually.

**ENCOURAGE OPEN CONVERSATIONS**

Teach children how to block, report and capture any behaviour or content that makes them uncomfortable. The console's built-in tools allow them to create screenshots and video clips, which can aid in reporting any issues. Keeping an open dialogue helps children feel supported and safe.

**Meet Our Expert**

Lloyd Coombes is the Games Editor of Daily Star and has been working in the gaming and tech industry for five years. A regular visitor to the App Store to try out new tools, he's also a parent and understands the importance of online safety. He's also a tech and fitness writer and has been published on sites including IGN, TechRadar, and plenty more.

**#WakeUpWednesday** The National College

@wake\_up\_weds /www.thenationalcollege @wake.up.wednesday @wake.up.weds

Users of this guide do so at their own discretion. No liability is entered into. Current as of the date of release: 25.06.2025



**Artsmark Gold Award**  
Awarded by Arts Council England



ON TRACK TO EXCELLENCE

A member of Swale Academies Trust

Registered Office: Ashdown House, Johnson Road, Sittingbourne, ME10 2JS

Registered in England No. 07344732

Coming soon: 

## LINGUA FIESTA



**2025**

Naturals. Novices. New words.  
We're proud of you, linguists!

04.07.25  
Hosted at: Westlands School

Swale  
ACADEMIES  
TRUST

- 9 secondary schools
- 18 incredible teams
- 100+ language champions

*"From building a replica of the Eiffel Tower to tasting some French and Spanish foods to creating different origami animals - LinguaFiesta really does have it all!"*

- Subject Leader for MFL,  
Westlands School

Swale  
ACADEMIES  
TRUST

## ROLLER HOCKEY TOURNAMENT

# Team Miles

Herne Bay Sports Arena, CT6 7NS

SAT 12th - SUN 13th  
JULY 2025  
FROM 8am

£2 Donation on entry

EVENING BAR

CLASSIC CARS SHOW

FACE PAINTING

INDOOR CRAFT MARKET

HAVE A GO' AT ROLLER HOCKEY

STREET FOOD VANS

RAFFLE & GAMES

ICE CREAM VAN

ROLLER DISCO

BOUNCY CASTLE

U14's & U20's




BONE CANCER  
UNTIL THERE'S A CURE



Artsmark  
Gold Award  
Awarded by Arts  
Council England

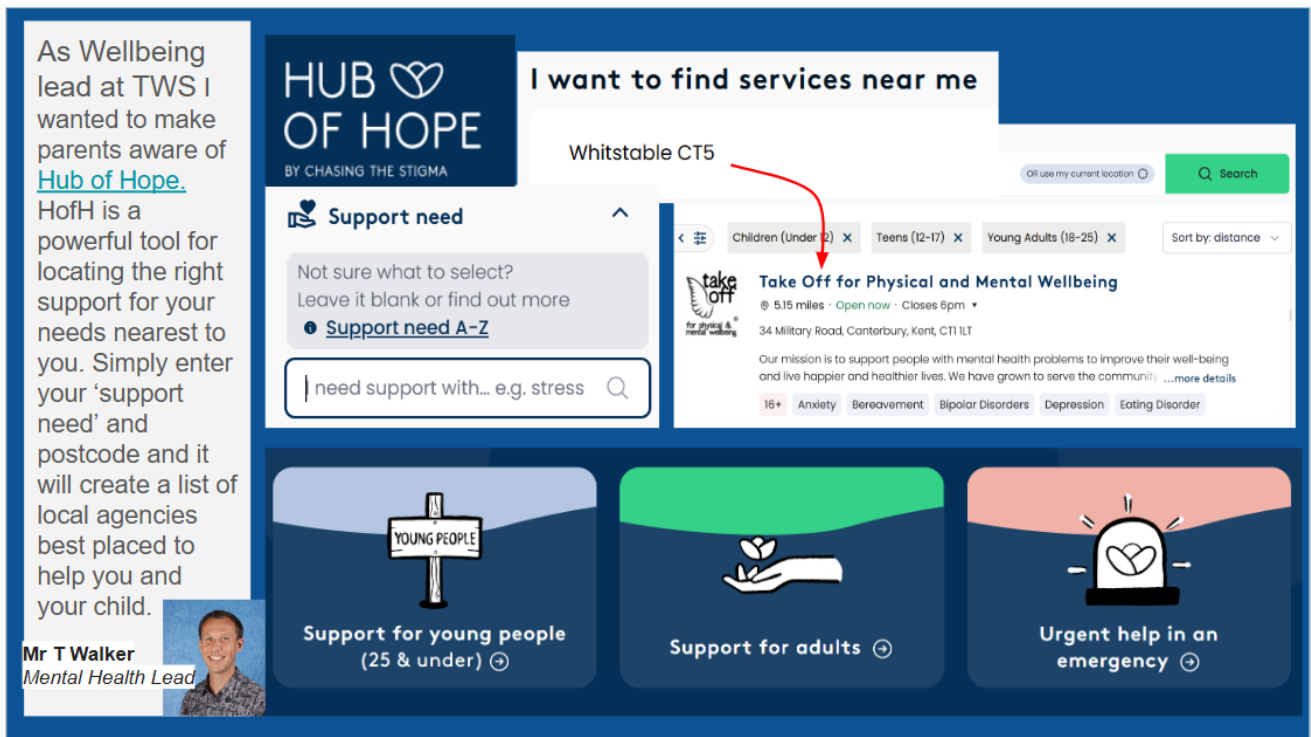


ON TRACK TO EXCELLENCE

A member of Swale Academies Trust

Registered Office: Ashdown House, Johnson Road, Sittingbourne, ME10 2JS

Registered in England No. 07344732



As Wellbeing lead at TWS I wanted to make parents aware of [Hub of Hope](#). HofH is a powerful tool for locating the right support for your needs nearest to you. Simply enter your 'support need' and postcode and it will create a list of local agencies best placed to help you and your child.

**Mr T Walker**  
Mental Health Lead

**HUB OF HOPE**  
BY CHASING THE STIGMA

I want to find services near me

Whitstable CT5

Support need

Not sure what to select? Leave it blank or find out more

Support need A-Z

need support with... e.g. stress

Take Off for Physical and Mental Wellbeing

5.15 miles · Open now · Closes 6pm

34 Military Road, Canterbury, Kent, CT1 1LT

Our mission is to support people with mental health problems to improve their well-being and live happier and healthier lives. We have grown to serve the community... more details

16+ Anxiety Bereavement Bipolar Disorders Depression Eating Disorder

Support for young people (25 & under)

Support for adults

Urgent help in an emergency

## REMINDERS

### \*\* Engines Off \*\*

To help reduce air pollution, noise levels, and respect our neighbour's, please remember to turn off your engine while waiting to drop off or pick up your child. Thank you for your cooperation.

### \*\* Respecting Accessible Parking Spaces \*\*

We kindly remind all parents and visitors to respect our designated accessible parking spaces. These spaces are reserved for individuals with disabilities who require close proximity to the school entrance. Please remember:

- **Not all disabilities are visible:** Please remember that many individuals with disabilities may not show outward signs.
- **Permits must be displayed:** If you have a valid permit, please ensure it is clearly visible in your vehicle's windscreen. Some individuals may have valid permits that are not always displayed.



Artsmark  
Gold Award  
Awarded by Arts  
Council England



The Institute for  
Research in Schools



GOLD  
SCHOOL  
2020

ON TRACK TO EXCELLENCE

A member of Swale Academies Trust

Registered Office: Ashdown House, Johnson Road, Sittingbourne, ME10 2JS

Registered in England No. 07344732

- **Cooperation is key:** We rely on everyone's cooperation to ensure these spaces are available for those who need them.

We understand that parking can be challenging, but we ask that you be considerate of others and refrain from parking in accessible spaces unless you have a valid permit.

Thank you for your understanding and cooperation in making our school accessible for everyone.

For more updates and events, please visit our website and follow us on X and Facebook.

<https://www.thewhitstableschool.org.uk/>

<https://www.facebook.com/TheWhitstableSchool>

<https://x.com/TheWhitSchool>

Best Wishes

The Whitstable School Team



**Artsmark  
Gold Award**  
Awarded by Arts  
Council England



**GOLD  
SCHOOL  
2020**

---

**ON TRACK TO EXCELLENCE**

***A member of Swale Academies Trust***

*Registered Office: Ashdown House, Johnson Road, Sittingbourne, ME10 2JS*

*Registered in England No. 07344732*