

04 July 2025

# NEWSLETTER

Dear Families,

It's been a truly fantastic week at The Whitstable School, packed with numerous successes, exciting trips and memorable events for our students! Read on for more details and highlights!

## Key Dates:

- 10 and 11 July - School Immunisations for Year 8 students
- 18 July 2025- Sports day
- 22 July 2025 - Term 6 Ends and Non-Uniform day. Students finish at 12:45

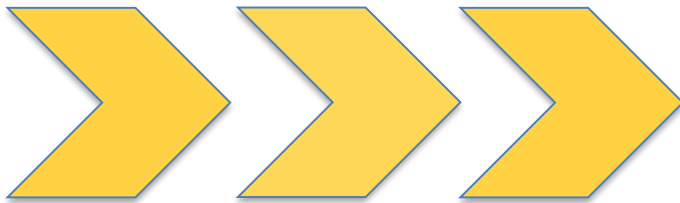
## Update

### Lost Property Collection

All unclaimed lost property items will be displayed in reception from **Monday, July 7th, to Thursday, July 10th, 2025**. Parents and carers are welcome to collect any items belonging to their **children between 9:30 AM and 3:30 PM on these dates**.

**Important:** Items left unclaimed after **Thursday, July 10th, 2025**, will be donated to our uniform cupboard. Any non-uniform items will be donated to a local charity. Please ensure you collect your child's belongings by the deadline.

**NEXT WEEK IS**  
**WEEK B**  
**TIMETABLE**



Artsmark  
Gold Award  
Awarded by Arts  
Council England



GOLD  
SCHOOL  
2020

ON TRACK TO EXCELLENCE

**A member of Swale Academies Trust**

Registered Office: Ashdown House, Johnson Road, Sittingbourne, ME10 2JS

Registered in England No. 07344732

**\*\* Headteacher message \*\***

Dear Parents,

What a fantastic and incredibly busy week it's been here at school! We had a wonderful time welcoming our Year 6 students for their taster sessions, which were a huge success as they embraced activities like science experiments, art and design technology, drama workshops, and PE. This week also saw a number of exciting reward trips for our deserving students, we were thrilled to host a live cooking demonstration with Jamie Oliver, which was an absolute highlight and we also welcomed our prospective Year 12 students for their taster morning!

On top of that, our Year 7s enjoyed their bespoke Sports Day, a tailor-made event that celebrated their athletic abilities and encouraged great sportsmanship. We want to extend a massive thank you to all of you for your continued support, especially during this period of very warm weather. Your children have been absolutely brilliant, continuing to attend school with great spirit and commitment despite the heat, and your ongoing support makes such a difference.

Mr A Holmes



## UPCOMING EVENTS

**\*\* Important: HPV Immunisation Visit & Consent Forms \*\***

The Immunisation Team will be visiting TWS on **July 10th and 11th, 2025**, to administer the HPV vaccine. It is essential that all parents complete the consent form via the online portal by **4:00 PM on July 7th, 2025**, regardless of whether you wish for your child to be vaccinated or not.

Please access the consent portal here: [www.kentimmunisations.co.uk](http://www.kentimmunisations.co.uk)



**Artsmark Gold Award**  
Awarded by Arts Council England



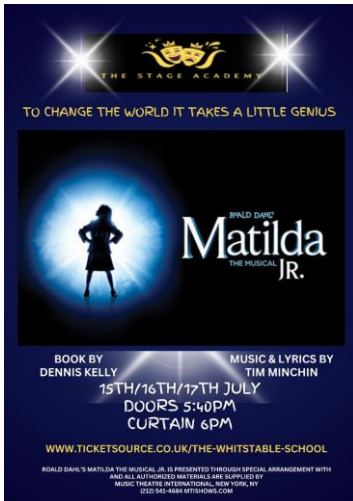
**GOLD SCHOOL 2020**

**ON TRACK TO EXCELLENCE**

**A member of Swale Academies Trust**

Registered Office: Ashdown House, Johnson Road, Sittingbourne, ME10 2JS

Registered in England No. 07344732



**\*\* TWS Matilda the Musical \*\***

Come and support our incredibly talented students in our school's fantastic production of Matilda!

Tickets are now on sale for performances on **July 15th, 16th and 17th**. Doors open at **5:40 PM** each night.

We can't wait to see you there!

**Tickets are now on sale via [Ticket source](#)**

**SIXTH FORM UPDATE**



**\*\* Exciting times ahead for new Sixth Form students! \*\***

The recent Year 12 Taster Morning was an overwhelming success, providing prospective students with an invaluable insight into the exciting opportunities that await them in Sixth Form. Despite the heat, we welcomed over 70 students, including many who are looking to join from other local secondaries and as part of our Football Academy.

For all those students who were unable to attend, we will be sending out an information pack soon with summer prep work and more information about sixth form life. We urge students who are still looking to apply or switch courses to contact Ms. Simons, Head of Sixth Form, via Kent Choices as soon as possible.

More information on results day and enrolment will be made available soon!



**ON TRACK TO EXCELLENCE**

**A member of Swale Academies Trust**

Registered Office: Ashdown House, Johnson Road, Sittingbourne, ME10 2JS

Registered in England No. 07344732

## \*\* Important Information: Examination Results Collection \*\*

### International Baccalaureate (IB) Results

- **Date:** Monday, July 7th, 2025
- **Time:** 9:00 AM - 10:00 AM
- **Location:** Study Room

### A Level and BTEC Results

- **Date:** Thursday, August 14th, 2025
- **Time:** 8:00 AM - 9:30 AM
- **Location:** The Stage a

**Contact:** Results will be available from Ms. Simons.

### Support on A Level Results Day

We understand that results days can be an anxious time. To ensure all students receive the support they need, our **UCAS Adviser** and **Careers Adviser** will be available on A Level results day. They will be on hand to provide guidance, support, and advice on:

- University applications
- Clearing
- Future career pathways

Should you have any questions, please do not hesitate to contact **Mrs. Simons, Head of Sixth Form and IB Coordinator**, at [tws\\_sixthform@swale.at](mailto:tws_sixthform@swale.at).



## \*\* Whitstable Town FC Academy Shines in Spain! \*\*

Our Whitstable Town FC Academy players delivered an outstanding performance at the Spain Trophy, achieving an unbeaten run in the group stages! Competing admirably against U19 and U23 sides with a squad of entirely 16 and 17-year-olds, they showcased incredible talent and determination.

While narrowly missing out on the final due to goal difference, finishing joint second in their group is a truly remarkable achievement.

Here are the fantastic group stage results:

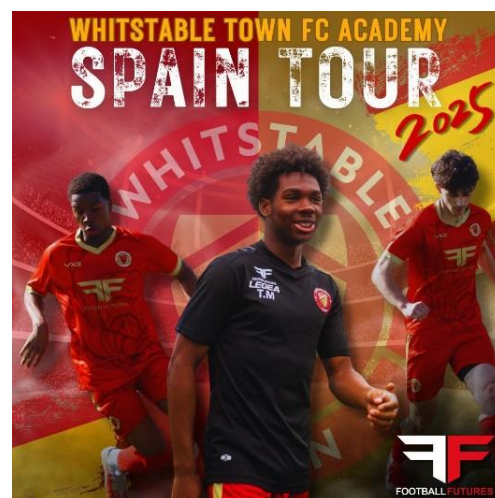
### June 29th, 2025:

- Whitstable Town FC Academy 0 - VfR Linden Neusen 1
- CF Torrefuerte 0 - Whitstable Town FC Academy 3

### June 30th, 2025:

- Whitstable Town FC Academy 0 - UC Poble Nou 0
- UC Poble Nou 2 - Whitstable Town FC Academy 3

We are incredibly proud of their efforts and look forward to even more success!



**\*\* Year 12 Criminology Students at Kent University! \*\***

Our Year 12 Criminology students recently had an incredible opportunity to attend "Under Investigation: Law, Crime and the Human Mind" at Kent University. They were captivated by keynote speaker Bernard Richmond KC, a specialist in serious crime cases like homicide and organised crime. Beyond the fascinating lecture, students also enjoyed a university tour and engaged with academic content at degree level. What a brilliant insight into their potential future studies

**\*\* NHS Exam Anxiety Workshop: A Calming Experience for Year 12 \*\***

Our Year 12 students recently benefited from an exam anxiety workshop expertly led by NHS professionals. This initiative provided students with practical strategies and a supportive environment to address their anxieties head-on.

The feedback has been overwhelmingly positive, with many students reporting they feel more equipped to manage stress and understand how to implement the techniques learned. This workshop not only offered tools for coping with exam anxiety but also fostered a greater sense of self-awareness and resilience, reminding everyone that mental well-being is as crucial as academic preparation.

**Looking Ahead:** Next up for Year 12 is our UCAS application and personal statement workshop on July 7th!

**THIS WEEK SO FAR...**

**\*\* TRACK Excellence Raffle Winners Announced! \*\***

Each Wednesday, the school will run a 'TRACK Excellence' raffle with two prizes for students. To enter, students just have to have seven or more positive signatures over the two weeks. Students with negative signatures are still able to participate.

This week's winners are:  
**Joseph and Kit (Year 9)**

We've teamed up with local businesses for amazing rewards.  
This week's prize is vouchers for local book store: **Tales on Moon Lane**



Students with their prizes in the TRACK Excellence raffle.



Artsmark  
Gold Award  
Awarded by Arts  
Council England



**ON TRACK TO EXCELLENCE**

**A member of Swale Academies Trust**

Registered Office: Ashdown House, Johnson Road, Sittingbourne, ME10 2JS

Registered in England No. 07344732

**\*\* Book of Commendation- Celebrating Student Success! \*\***

We are pleased to announce the following students have been recognised for their exceptional work and have been added to the Book of Commendation.

**Spanish:**

- **Cody (Year 7)** for Spanish presentation.

**English:**

- **Nathan (Year 9)** for beautiful sonnet in English.
- **Molly, Lilly, Chloe and Daisy (Year 9)** for writing wonderful Japanese 3-line Haiku poems

**Art:**

- **Seb, Nancy, April Laila-Rose and Ava (Year 8)** for wonderful political posters in art.

**Food technology:**

- **Fraser and Rowen (Year 8)** for cooking delicious spaghetti Bolognese.

**Wood technology:**

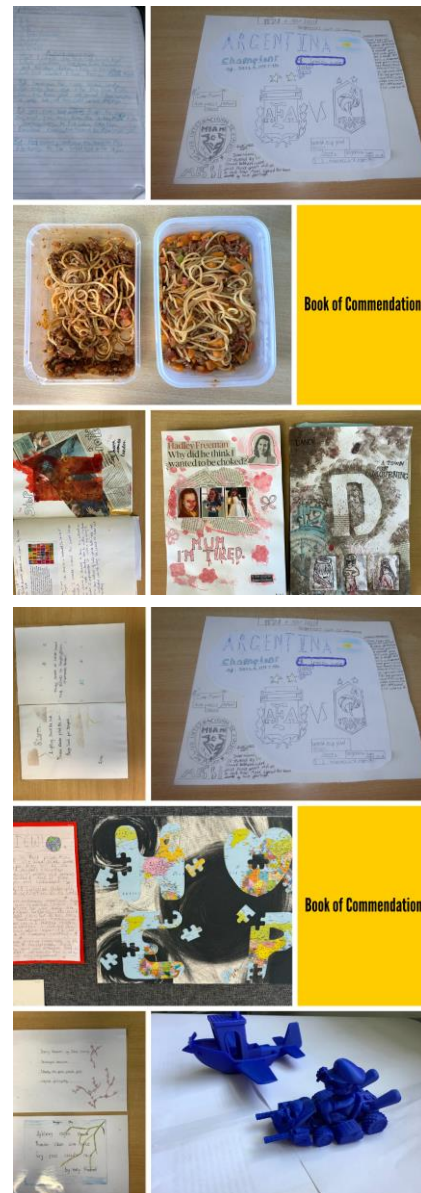
- **Fergus and Alfie (Year 8)** for creating a poster with the 6 R's.

**Science:**

- **Hetty, Evie and Finley (Year 7)** for their creative world view poster.

**Homework:**

- **Jack (Year 7)** for very creative 3D figures designed at home with a 3D printer.



Artsmark  
Gold Award  
Awarded by Arts  
Council England



GOLD  
SCHOOL  
2020

ON TRACK TO EXCELLENCE

**A member of Swale Academies Trust**

Registered Office: Ashdown House, Johnson Road, Sittingbourne, ME10 2JS

Registered in England No. 07344732

**\*\* Chloe's Golden Achievement in International Table Tennis! \*\***

Chloe (Year 11) competed in the International Schools Table Tennis Tournament in Jersey. In the Under 16 girls' team event (playing in pairs) on Friday and Saturday, her team won GOLD! On Sunday, in the individual tournament, Chloe reached the semi-finals and was awarded a bronze medal!

This is a fantastic achievement representing both England and The Whitstable School! title



**\*\* Year 8 Terrarium Project Success \*\***



This term, two of our Year 8 classes embarked on an exciting project, diving into ecosystems and biodiversity—core topics within the national science curriculum. Students designed and built their own self-contained terrariums, giving them a first-hand look at the delicate balance of living and non-living elements within an ecosystem.

From selecting suitable plants and layering soil to managing moisture and light, our pupils gained practical experience in sustaining life in a closed environment. This hands-on activity not only deepened their understanding of ecological principles but also fostered critical thinking and creativity.

As the first groups to trial this initiative, these Year 8 students played a key role in refining a scheme of work that we'll roll out to the entire year group in the autumn term. Their enthusiasm and insightful feedback are already shaping how this activity will be delivered to future classes. We're incredibly proud of their efforts and can't wait to see how their projects continue to develop over the next few weeks, hoping to inspire curiosity and environmental awareness across the entire year group.



**Artsmark Gold Award**  
Awarded by Arts Council England



**ON TRACK TO EXCELLENCE**

**A member of Swale Academies Trust**

Registered Office: Ashdown House, Johnson Road, Sittingbourne, ME10 2JS

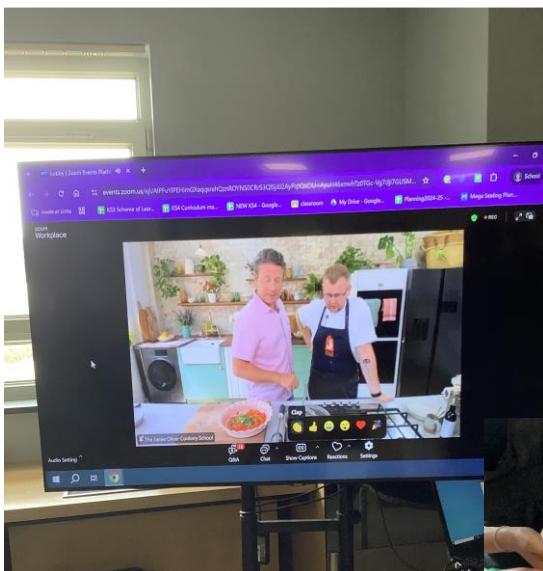
Registered in England No. 07344732

**\*\* Record-Breaking Pasta Power in Food & Nutrition! \*\***



On Tuesday, July 1st, 16 of our enthusiastic Year 9 students took on a sizzling challenge, participating in a **Guinness World Record** attempt for the largest cookery lesson, in association **with Jamie Oliver's Cookery School!** Despite the sweltering kitchen and a fast pace, every student passionately crafted fresh orecchiette pasta with a delicious no-cook tomato sauce. They were cheered on by the live online presence of Jamie Oliver and his chefs, making it an incredibly memorable experience.

We're still eagerly awaiting official confirmation on whether the record was broken, so fingers crossed! A huge well done to all the dedicated students who took part!



Artsmark  
Gold Award  
Awarded by Arts  
Council England



**ON TRACK TO EXCELLENCE**

**A member of Swale Academies Trust**

Registered Office: Ashdown House, Johnson Road, Sittingbourne, ME10 2JS

Registered in England No. 07344732

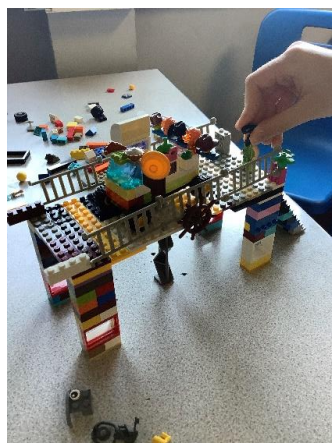
## \*\* Year 8 Duke of Edinburgh Taster: Tents Up in a Flash! \*\*

Today, a group of our Year 8 students got a fantastic taste of the Duke of Edinburgh award during a special taster session. They tackled the challenge of building tents, with some groups absolutely smashing it by getting their tents up in an impressive 15 minutes! What a brilliant start to their DoE journey!



## Year 9 Builds "The Whitstable Bridge" with Lego!

Our Year 9 students tackled an awesome team-building Lego task! Each team was responsible for constructing one section of a bridge, communicating only verbally. It sounds like they did a fantastic job, and **"The Whitstable Bridge"** is a brilliant name for their collaborative masterpiece!



**Artsmark Gold Award**  
Awarded by Arts Council England



**ON TRACK TO EXCELLENCE**

**A member of Swale Academies Trust**

Registered Office: Ashdown House, Johnson Road, Sittingbourne, ME10 2JS

Registered in England No. 07344732

**\*\* Visual Art Exhibition: A Creative Success! \*\***

Our talented Visual Art students saw their incredible work exhibited at Creative Space, a local gallery, this past week, and it was a resounding success! Members of the public left wonderful comments, including praise like **"lovely to see student work on show in the community"** and **"each piece of work is a joy."**

A huge well done to all the students whose fantastic art was featured in the exhibition!

**\*\* Important: HAF Vouchers Delivered for Holiday Activities! \*\***

For eligible families, your **Holiday Activities and Food (HAF) vouchers** have now been automatically sent out. These vouchers are designed to help your children participate in enriching activities during the upcoming term break.

The vouchers were distributed on **July 2nd** to all benefits-related, FSM-eligible families. There's no cost to the school for issuing these, and families should have received them directly.

To ensure a smooth process for future distributions, please remember to keep your contact information updated in the school's management information system.

**NOTICE BOARD**

**\*\* Important Police Notice: Catapult Use and Wildlife Safety \*\***

Kent Police have issued an urgent reminder to parents about a concerning rise in reports of children using catapults to target and injure animals and wildlife. While simply carrying a catapult isn't always an offence, using it improperly can lead to serious criminal charges related to animal cruelty and property damage.

Parents are strongly advised to discourage children from taking catapults out of the home, explain the criminal consequences of causing harm or damage, and contact their local beat officer (details at [www.kent.police.uk](http://www.kent.police.uk)) for safe disposal.



**E-scooters – are you breaking the law?**

Can I ride my e-scooter to school or work? **No, it's illegal...**

E-scooters are classed as motor vehicles and are required to be taxed and insured. It's not possible to get insurance for privately owned e-scooters, which means it's illegal to use them.

Can I ride my e-scooter on the pavement? **No, it's illegal...**

You cannot use e-scooters on public footpaths, cycle lanes or roads.

What happens if I'm caught using my e-scooter in public spaces? **The scooter may be seized and as a result, destroyed.**

If stopped by an officer, you may be asked to complete a breath and drugs test. You also risk a £300 fine and six penalty points on your licence for no insurance.

**Kent Police** Think before you buy: The number of electrical scooters being used on our streets has risen, as well as reports of serious injury and fatalities. For more information and advice on the use of e-scooters visit [www.kent.police.uk/road-safety](http://www.kent.police.uk/road-safety)



**E-scooters – are you breaking the law?**

Can I ride my e-scooter to school or work? **No, it's illegal...**

E-scooters are classed as motor vehicles and are required to be taxed and insured. It's not possible to get insurance for privately owned e-scooters, which means it's illegal to use them.

Can I ride my e-scooter on the pavement? **No, it's illegal...**

You cannot use e-scooters on public footpaths, cycle lanes or roads.

What happens if I'm caught using my e-scooter in public spaces? **The scooter may be seized and as a result, destroyed.**

If stopped by an officer, you may be asked to complete a breath and drugs test. You also risk a £300 fine and six penalty points on your licence for no insurance.

**Kent Police** Think before you buy: The number of electrical scooters being used on our streets has risen, as well as reports of serious injury and fatalities. For more information and advice on the use of e-scooters visit [www.kent.police.uk/road-safety](http://www.kent.police.uk/road-safety)



**Artsmark Gold Award**  
Awarded by Arts Council England



**ON TRACK TO EXCELLENCE**

**A member of Swale Academies Trust**

Registered Office: Ashdown House, Johnson Road, Sittingbourne, ME10 2JS

Registered in England No. 07344732



**What does caring look like for you?**

**Kent Young Carers**

“ MY MUMS DISABLED SO I DO EXTRA CHORES AROUND THE HOUSE, HELP TO COOK MEALS, AND HELP HER TO GET DRESSED AND OUT OF BED ”

My brother's autistic and sometimes needs help to calm down at night time when he gets angry

I help my Dad take his medication as he has MS. He's in hospital a lot so I worry about him and what he would do if I go to university

MY SISTER HAS MENTAL HEALTH PROBLEMS AND CRIES A LOT OF THE TIME. MY PARENTS HELP BUT I LIKE TO TALK AND HANG OUT WITH HER TO HELP CHEER HER UP

## YOUNG CARERS AT THE WHITSTABLE SCHOOL

Did you know that The Whitstable School now has a Young Carers Support Group running every Wednesday lunchtime in GZ2? This group is run by Mrs James and is open to all Young Carers (registered or non-registered) caring for a family member with; a long term illness, disability, poor mental health or substance misuse. Whether it is to just sit and listen, talk and share or just be in the company of other young people with caring responsibilities, we are here!

**What is a Young Carer?**  
Young Carers provide unpaid care for a family member or friend with an illness, disability, mental health issue, or addiction. They support the cared-for and other family members with practical tasks, physical care, and emotional support, whilst at the same time trying to live their own life.

Do you think that your child is a Young Carer? Please contact Mrs James for more info or give Kent Young Carers a call on 0300 111 1110, email [youngcarers@imago.community](mailto:youngcarers@imago.community) or take a look at the Kent Young Carers website [www.imago.community](http://www.imago.community)



**THE WHITSTABLE SCHOOL BREAKFAST CLUB**

## Start Your Day Right

Come to the Restaurant from 8:20 - 8:35 everyday  
Bacon or sausage rolls, croissants, waffles, pain au chocolate and pain au raisin Prices from £1.55  
Free porridge available to all students everyday



**Artsmark Gold Award**  
Awarded by Arts Council England



**GOLD SCHOOL 2020**

**ON TRACK TO EXCELLENCE**

**A member of Swale Academies Trust**

Registered Office: Ashdown House, Johnson Road, Sittingbourne, ME10 2JS

Registered in England No. 07344732

Coming soon: 

# SHAKESFEST



**2025**  
Drama. Danger. Deception.  
Dare to dream, actors!

**Swale  
ACADEMIES  
TRUST**

10.07.25  
Hosted by: The Eastbourne Academy



- 8 secondary schools
- 8 captivating performances
- 100+ drama students

Dare to dream, actors!  
The sky is the limit.

*"Shakesfest is a great day with an amazing atmosphere and it brings me out of my shell."*

- Scarlett, Year 10,  
The Eastbourne Academy

**Swale  
ACADEMIES  
TRUST**



**Artsmark  
Gold Award**  
Awarded by Arts  
Council England



**GOLD  
SCHOOL  
2020**

**ON TRACK TO EXCELLENCE**

**A member of Swale Academies Trust**

Registered Office: Ashdown House, Johnson Road, Sittingbourne, ME10 2JS

Registered in England No. 07344732



At The National College, our WakeUpWednesday guides empower and equip parents, carers and educators with the confidence and practical skills to be able to have informed and age-appropriate conversations with children about online safety, mental health and wellbeing, and climate change. Formerly delivered by National Online Safety, these guides now address wider topics and themes. For further guides, hints and tips, please visit [nationalcollege.com](https://nationalcollege.com).

## What Parents & Educators Need to Know about APPLE IPADS

Tablets remain a staple of children's digital lives – and Apple's iPad is by far the most popular model. According to Ofcom, over half of younger children regularly use a tablet to play games, watch online content or access apps. With their broad functionality, iPads can be helpful tools, but without supervision, they may expose children to risks ranging from inappropriate content to screen overuse.

### WHAT ARE THE RISKS?

#### COSTLY TO REPAIR

Unlike some child-friendly tablets, the iPad is not built for rough handling. Its slim design and high cost mean that a drop or spill can result in a costly repair. If a child is using the device regularly, a sturdy case and screen protector are strongly recommended to help prevent accidental damage.

#### DATA PRIVACY

While Apple is known for strong privacy protections, a recent study found that many iOS apps aimed at children still share personal data. Over 40% of the tested apps sent at least one piece of user information to third parties, raising concerns about advertising and analytics being targeted at underage users.

#### INAPPROPRIATE CONTENT

The App Store and Safari browser provide almost unrestricted access to online material. Children may stumble upon age-inappropriate content, whether through apps, advertisements or online searches. Even recommended content algorithms can surface unsuitable material.

#### BYPASSING RESTRICTIONS

Siri – Apple's voice assistant – can potentially override restrictions, especially with the newer text-based commands introduced through Apple Intelligence. Without safeguards in place, children may inadvertently access inappropriate topics simply by asking a question, bypassing certain filters previously set by adults.

#### SCREEN ADDICTION

iPads can be highly immersive, and excessive screen time may affect a child's emotional and behavioural development. Signs of overuse might include mood swings, irritability, and difficulty focusing on non-digital activities.

#### REDUCED ATTENTION & COGNITIVE IMPACT

Prolonged use of tablets has been linked with reduced memory, slower processing speeds and difficulties in concentrating. Research shows that children who spend excessive time gaming or consuming media on tablets may struggle with language development and executive functioning over time.

### Advice for Parents & Educators

#### ENABLE FAMILY SHARING

Family Sharing allows you to create a dedicated Apple ID for your child and manage their activity. You can approve purchases, control what content they can access, and set time limits – all done remotely from your own device. It's a simple but powerful way to maintain oversight.

#### FILTER APPS, WEBSITES & IN-APP PURCHASES

Parental controls in iOS let you block explicit content in Safari, restrict app downloads, and manage in-app purchase permissions. You can also filter websites automatically to prevent access to adult material and disable the installation of certain app types completely.

#### USE SCREEN TIME FEATURES EFFECTIVELY

Tools like Downtime and App Limits can reduce device overuse. Downtime allows you to block access during key times – such as before bed or during homework – while App Limits sets daily time caps on specific games or apps. Alerts help children anticipate when their time is almost up.

#### PREVENT UNAPPROVED SPENDING

Children can accidentally (or intentionally) make purchases within apps. Activating Ask to Buy under Family Sharing ensures you receive a notification to approve any app or in-app purchase. This stops surprise charges and allows you to discuss purchases together before they're made.

#### Meet Our Expert

Carly Page is a seasoned technology journalist with over a decade of experience. Formerly a senior cybersecurity reporter at TechCrunch, Carly now writes for publications including WIRED, Forbes, Techradar, and Tes. With a deep understanding of online safety, she brings a valuable perspective to parenting in the digital age.

@wake\_up\_weds    /www.thenationalcollege    @wake.up.wednesday    @wake.up.weds

Users of this guide do so at their own discretion. No liability is entered into. Current as of the date of release: 02.07.2025



ON TRACK TO EXCELLENCE

A member of Swale Academies Trust

Registered Office: Ashdown House, Johnson Road, Sittingbourne, ME10 2JS

Registered in England No. 07344732

## REMINDERS

### **\*\* Respecting Accessible Parking Spaces \*\***

We kindly remind all parents and visitors to respect our designated accessible parking spaces. These spaces are reserved for individuals with disabilities who require close proximity to the school entrance.

Please remember:

- **Not all disabilities are visible:** Please remember that many individuals with disabilities may not show outward signs.
- **Permits must be displayed:** If you have a valid permit, please ensure it is clearly visible in your vehicle's windscreen. Some individuals may have valid permits that are not always displayed.
- **Cooperation is key:** We rely on everyone's cooperation to ensure these spaces are available for those who need them.

We understand that parking can be challenging, but we ask that you be considerate of others and refrain from parking in accessible spaces unless you have a valid permit.

Thank you for your understanding and cooperation in making our school accessible for everyone.

### **\*\* Engines Off \*\***

To help reduce air pollution, noise levels, and respect our neighbour's, please remember to turn off your engine while waiting to drop off or pick up your child. Thank you for your cooperation.

For more updates and events, please visit our website and follow us on X and Facebook.

<https://www.thewhitstableschool.org.uk/>

<https://www.facebook.com/TheWhitstableSchool>

<https://x.com/TheWhitSchool>

Best Wishes

The Whitstable School Team



**Artsmark  
Gold Award**  
Awarded by Arts  
Council England



**GOLD  
SCHOOL  
2020**

**ON TRACK TO EXCELLENCE**

***A member of Swale Academies Trust***

*Registered Office: Ashdown House, Johnson Road, Sittingbourne, ME10 2JS*

*Registered in England No. 07344732*