

14 November 2025

NEWSLETTER!

Dear Families,

It has been a truly productive and successful second week back at school! Please read on for more details and highlights from this week.

Key Dates:

19 November 2025 - Year 10 & 11 Parent Forum

27 November 2025 - Sixth Form Open Evening

03 December 2025 - Year 7, 8 and 9 Parent Forum

04 December 2025 - Year 12 Parents Evening

09 December 2025 - Flu Immunisations – All year groups

11 December 2025 - Year 11 Parents Evening

17 December 2025 – Christmas Dinner

19 December 2025 - End of Term 2 (*Students leave at 12:55PM*).

Correction Notice

Please accept our apologies for the error in the last newsletter: the upcoming Parents' Evening on **December 11th** is for **Year 11** students, not Year 13.



The Whitstable School
ON TRACK TO EXCELLENCE

ADMISSIONS SEPTEMBER 2026

SIXTH FORM OPEN EVENING

Thursday, 27 November 2025
5:30PM- 7:00PM

New **Football Academy** curriculum pathway.

We look forward to meeting you at our Open Evening. Attendance is open to all and no advance booking is required.



Contact Us
01227 931300



Website Us
<https://www.thewhitstableschool.org.uk>



NEXT WEEK IS WEEK B TIMETABLE



Artsmark
Gold Award
Awarded by Arts
Council England



GOLD
SCHOOL
2020

ON TRACK TO EXCELLENCE

A member of Swale Academies Trust

Registered Office: Ashdown House, Johnson Road, Sittingbourne, ME10 2JS

Registered in England No. 07344732

ANNOUNCEMENT

⚠️ FINAL REMINDER: School Admissions (PAN) Consultation Closes TODAY!

The Trustees of Swale Academies Trust and the Governors of The Whitstable School are continuing to seek views on the proposal to reduce the Published Admission Number (PAN) from 210 to 190 places starting September 2027.

Today, Friday, November 14, 2025, is the final day to submit your response to this consultation.

Further details can be found in the attached letter: [PAN Consultation Letter](#).

How to Have Your Say (Deadline TODAY):

- Email: Send your views to TWS_admin@swale.at
- Form: Complete the response form at the back of the letter and return it to the school office.

Please ensure your views are sent today to be considered.

Thank you for taking the time to contribute to this vital public consultation!



UPCOMING EVENTS

🔔 ** Sixth Form Applications Now Open!! **

We are delighted to confirm that applications for **The Whitstable School Sixth Form** are officially open! Here are the key details you need:

- **Prospectus:** Check out our brand-new prospectus. Download your copy here: [Sixth Form Prospectus](#)
- **Applications:** All applications should be made through Kent Choices, where you can peruse our full 2026 course offer. Apply here: [Kent Choices](#)

Open Evening Reminder

We look forward to welcoming you to our Open Evening on **Thursday, November 27th 5:30pm – 7:00pm**.

This is a great chance to:

- Hear about life in Sixth Form directly from our current students.
- Speak with our specialist subject teachers.



Artsmark
Gold Award
Awarded by Arts
Council England



GOLD
SCHOOL
2020

ON TRACK TO EXCELLENCE

A member of Swale Academies Trust

Registered Office: Ashdown House, Johnson Road, Sittingbourne, ME10 2JS

Registered in England No. 07344732

Need Advice?

If you or your child would like to speak to Ms. Simons, Head of Sixth Form, regarding any aspect of the application process, please contact us at tws_sixthform@swale.at. We are excited to receive your applications!

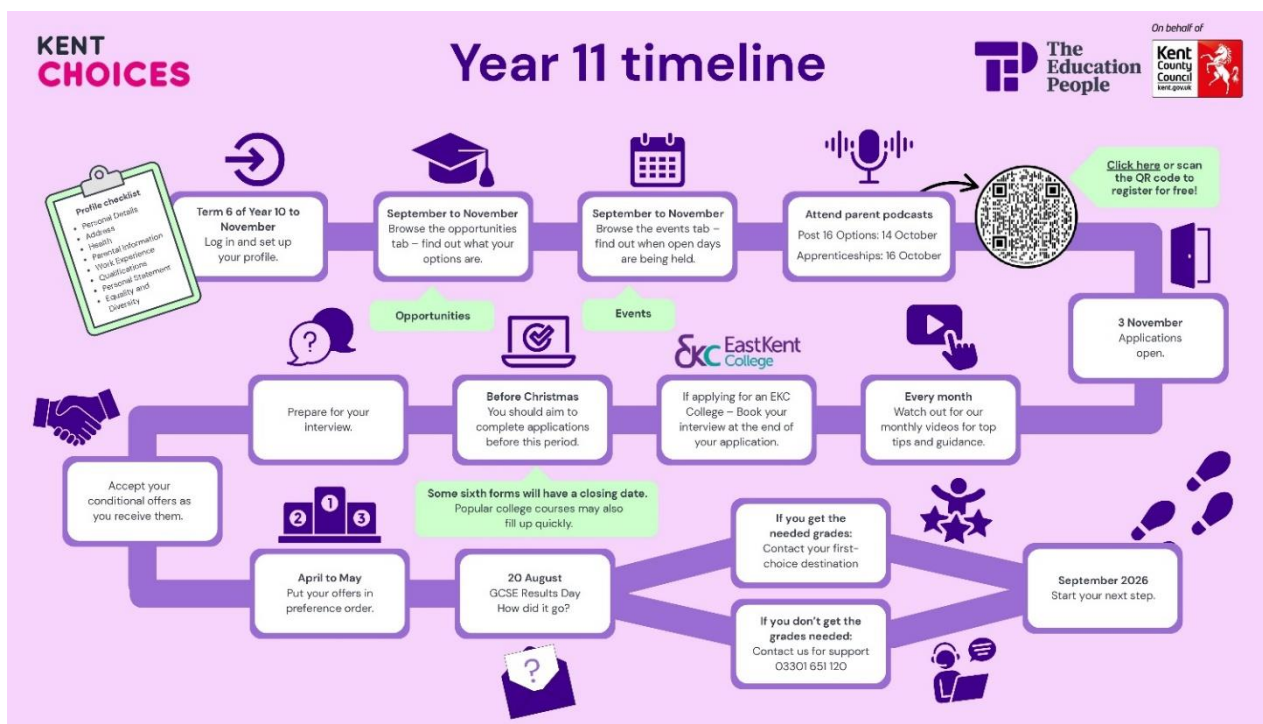
Kent Choices Checklist: Stay On Track

We strongly encourage students in Year 11 to log on and familiarise themselves with the Kent Choices website as soon as possible. Use this quick tick list to help ensure your child is making great progress:

- Get logged on.
- Complete the online profile.
- Note down the open days of Colleges/Sixth Forms.
- Start to think about and make application(s).

Resources & Support

For helpful videos and information for both parents and students, please use this link: [Kent Choices Resources](#)
Any queries or questions should be directed to a member of the careers team in school, or you can contact us via email at tws_careers@swale.at.



**** Important reminder: Upcoming School Immunisations ******Seasonal Flu Vaccine (December 2025)**

The Immunisation Service will be visiting the school on **Tuesday, December 9, 2025**, to offer the **Seasonal Flu Vaccine**.

Action Required:

- Please discuss this immunisation with your child.
- Complete the online consent form at: www.kentimmunisations.co.uk
- **Deadline:** Please submit your form before **4:00 PM on December 4, 2025**. **School Code is: KT144354**

If your child cannot be vaccinated at school, you will receive an email with a link to book an alternative appointment at one of their clinics.

HPV Vaccine (February/March 2026)

The Immunisation Team has also scheduled visits for the **HPV Vaccine** on the following dates:

- **Wednesday, February 25, 2026**
- **Wednesday, March 11, 2026** (Full-day visits)

The primary focus is **Year 8 students**. However, students in Years 9, 10 or 11 who have not yet received a dose of the HPV vaccine will also be included in these sessions if they are available.

Further Information & Support

- **General Information:** For more details on the flu vaccine, visit vaccineknowledge.ox.ac.uk/flu-vaccine or www.nhs.uk/vaccinations/child-flu-vaccine.
- **General Questions:** If you have questions about the process for the immunisations, please contact the [school office](#).
- **Health Support:** For wider support regarding issues like sleep, behaviour, emotional support, and healthy lifestyles, Kent School Health supports children and young people aged four to nineteen. You can find helpful information at **Kent Family:** <https://family.kentcht.nhs.uk/>



SIXTH FORM UPDATE

** Parental Careers Support: Volunteer Needed! **

As we strive to provide our students with the best possible foundation for their futures, we know that some of the most valuable lessons come from real-world experience.

We are reaching out to you, our wonderful parent community, hoping to build a collaborative network for our upcoming careers events.

Your professional insights could make a huge difference!

If you can support our students in any way (even just for an hour), please complete this [Google Form](#)

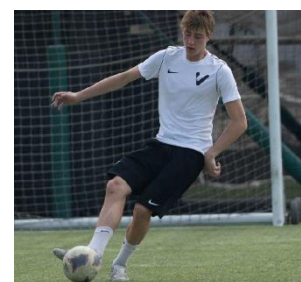
If you have any questions, please contact me via email at tw_s_careers@swale.at.

** Academy Success: Top of the League and USA-Bound! **

Our **Football Academy** players are doing exceptionally well, currently sitting **top of the National League**—a fantastic achievement that reflects the squad's commitment! The squad's confidence is soaring and their hard work on the training pitch is clearly paying off! We're equally thrilled about the academic and future success of our Year 13 students:

- University Offers: We're excited to see offers already rolling in from prestigious universities such as Bristol and Kent.
- USA Scholarships: Several of our Football Academy students have successfully secured highly sought-after USA scholarships!

A special mention goes to Year 13 Academy member **Luca**, who has been selected to represent his future USA scholarship program in a series of matches against five United Arab Emirates clubs in Dubai! Luca will begin his scholarship next summer and already has meetings lined up with a university in Pennsylvania. We are excited to hear about his time abroad!



Artsmark
Gold Award
Awarded by Arts
Council England



GOLD
SCHOOL
2020

ON TRACK TO EXCELLENCE

A member of Swale Academies Trust

Registered Office: Ashdown House, Johnson Road, Sittingbourne, ME10 2JS

Registered in England No. 07344732

**** Consistent Attendance: The Cornerstone of Success and Wellbeing ****

A Message from Mr. A Holmes, Headteacher

Consistent school attendance is a cornerstone of your child's overall mental health, well-being and academic success.

We recognise that attendance remains a challenge for many, with those 'odd days off' due to minor illnesses quickly accumulating into a significant risk of poor overall attendance.

Beyond the obvious benefit of maximising subject attainment and securing quality grades, regular attendance provides:

- **Vital structure, routine and a sense of belonging** that are crucial for emotional stability.
- **Essential social connections, collaborations and friendships** that build confidence and social-emotional skills.

It is truly important that if your child has just a slight sniffle, they still attend school. This secure, consistent base allows them to feel more connected and less anxious about falling behind. The more time they miss now, the higher the risk they take time off in the future.


Please remember, we are here to support you and will always try to help you ensure your child is in school as much as possible.

Attendance isn't just about learning in class; it's your **all-access pass** to everything exciting happening at The Whitstable School! We believe that the incredible clubs, trips, and competitive events are the best reasons to keep school attendance at 100%.

We offer **over 30 extra-curricular clubs and activities** that turn a regular school week into something epic.

Activities Include:

- Cross Trust events
- STEM clubs (Science, Technology, Engineering, Maths)
- Visitors talk
- Competitions
- Trips, and much more!

 **Remember:** We have exciting opportunities available every week within the school and consistent attendance is essential for students who want to participate and get involved!

- **For more information, please visit our website:**
[TWS Extra- Curricular](#)



**Artsmark
Gold Award**
Awarded by Arts
Council England



**GOLD
SCHOOL
2020**

ON TRACK TO EXCELLENCE

A member of Swale Academies Trust

Registered Office: Ashdown House, Johnson Road, Sittingbourne, ME10 2JS

Registered in England No. 07344732

Next Week's Events:

- **Trip:** Tuesday, November 18th (9:50 AM – 12:55 PM). Year 9 students are off to the Horsebridge Cinema in Whitstable for a cultural trip.
- **Shakefest:** Wednesday, November 19th (3:10 PM – 4:30 PM).
- **Robotics Battle:** Friday, November 21st (7:00 AM – 6:30 PM). Our elite engineers compete in the challenging **VEX IQ Robotics Competition** at Haileybury School.



THIS WEEK SO FAR...

** TRACK Excellence Raffle Winners Announced! **

Each Wednesday, the school will run a 'TRACK Excellence' raffle for all students. To enter, students must have seven or more positive signatures over the two weeks. Students with negative signatures are still able to participate.

This week's winner is:

Esha (Year 8)

We've teamed up with local businesses for amazing rewards. This week's prize is vouchers for local café: **Revival**.



Are You on TRACK?

TRACK

TOLERANCE
RESILIENCE
ACHIEVEMENT
COURTESY
KNOWLEDGE



Artsmark
Gold Award
Awarded by Arts
Council England



GOLD
SCHOOL
2020

ON TRACK TO EXCELLENCE

A member of Swale Academies Trust

Registered Office: Ashdown House, Johnson Road, Sittingbourne, ME10 2JS

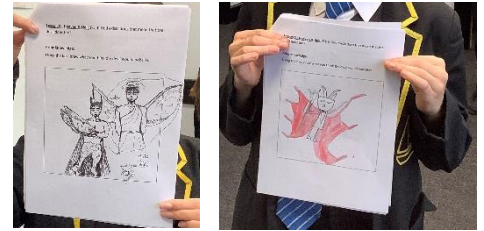
Registered in England No. 07344732

**** Book of Commendation- Celebrating Student Success! ****

We are pleased to announce the following students have been recognised for exceptional work and have been added to the Book of Commendation.

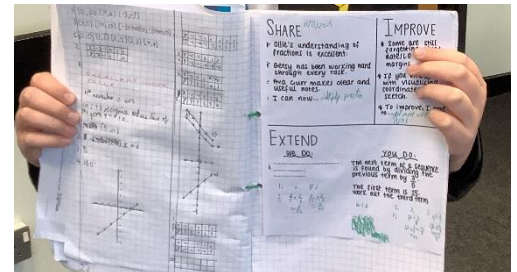
RE:

- **Jess, Tommy, William and Poppy (Year 7)** were commended for their excellent Religious Education work, which included some truly fantastic pictures of the devil!



Mathematics:

- **Ava, Ollie, Charlie and Betsy (Year 8)** were also commended for their brilliant work in Maths, specifically in plotting graphs.



**** UCAS & University Application Support for Year 13 ****

Our Year 13 students recently participated in a highly beneficial application workshop with **Canterbury Christ Church University (CCCU)** to support their university applications.

If your child would like support with their UCAS application, please note the following upcoming opportunities:

- **Personal Statement Workshops:** We have several small group workshops scheduled over the next few weeks focusing on personal statement writing, run in collaboration with **Kent University** and **CCCU**.
- **Dedicated Support:** Mr. Lane is also available for one-on-one help and guidance in the Sixth Form study room every **Monday and Tuesday**.

To book support or for any further UCAS queries, please contact us at tws_sixthform@swale.at.



Artsmark
Gold Award
Awarded by Arts
Council England



ON TRACK TO EXCELLENCE

A member of Swale Academies Trust

Registered Office: Ashdown House, Johnson Road, Sittingbourne, ME10 2JS

Registered in England No. 07344732

**** Trip Highlight: Whitstable Playhouse ****

We were lucky to experience an amazing production of The Lindley Youth Group's hilarious 'The Complete Works of Shakespeare'!

Several of our own pupils were in the fast-paced play, so a huge 'Well done' to **Evie, Issy, Oliver, Poppy and Niamh!**

Pupils who came along were treated to fantastic scenes, including a drowning (forwards and backwards), a tasty pie, an exit pursued by a bear, a royal rugby game, and a dancing man in pink tights (you know who you are!).

Thank you to Mr. Scales and Ms. Gee for running the trip.

NOTICE BOARD**** The Whitstable School Big Book Swap! ****

We are excited to announce our first **Big Book Swap** on **Thursday, November 27th, from 3:15 PM - 4:00 PM** in the Stage (please enter school through the main office).

We invite all families to donate any unwanted books!

- **How it Works:** Children are invited to choose two books to take home free of charge. If further books are chosen, a small donation is asked for.
- **Donations:** If you are having a sort-out before Christmas and have any books you would like to donate, please bring them to the Library before Tuesday, November 18th.

**** Annual Policing Survey: Have Your Say ****

Matthew Scott, the Kent Police and Crime Commissioner, is currently undertaking an **Annual Policing Survey**. The survey seeks the public's views on trust in the Police, safety where we live, and what the Force's priorities should be.

TWS has been asked to share this survey with pupils and parents so that you can have your say on your experiences. Last year, over a thousand young people took part and directly influenced policy in Kent.

- **Take the Survey Here:** [Policing Survey Link](#)
- **Deadline:** The survey closes at the end of **December 25th**.

The results will be used to set Kent Police's priorities next year and inform how we can work together to improve safety. Thank you for any support you can provide.

YOUNG CARERS AT THE WHITSTABLE SCHOOL

Did you know that The Whitstable School has a Young Carers Support Group running every Wednesday lunchtime in GZ2?

This group is run by Mrs James and is open to all Young Carers (registered or non-registered).

Whether it is to just sit and listen, talk and share or just be in the company of other young people with caring responsibilities, we are here!

What is a Young Carer?

A young carer is a young person under 18yrs who provides practical and/or emotional support, usually to a family member who may have: A long-term health condition, illness or frailty, Physical Disability, Neurodevelopmental Disorder, poor mental health or substance misuse issue

If you are unsure if your child is a Young Carer please contact Mrs James or see attached for more information - [Young Carers Parent Resource](#)



REMINDERS

** Respecting Accessible Parking Spaces **

We kindly remind all parents and visitors to respect our designated accessible parking spaces. These spaces are reserved for individuals with disabilities who require close proximity to the school entrance. Please remember:

- **Not all disabilities are visible:** Please remember that many individuals with disabilities may not show outward signs.
- **Permits must be displayed:** If you have a valid permit, please ensure it is clearly visible in your vehicle's windscreen. Some individuals may have valid permits that are not always displayed.
- **Cooperation is key:** We rely on everyone's cooperation to ensure these spaces are available for those who need them.

We understand that parking can be challenging, but we ask that you be considerate of others and refrain from parking in accessible spaces unless you have a valid permit.

Thank you for your understanding and cooperation in making our school accessible for everyone.

** Engines Off **

To help reduce air pollution, noise levels, and respect our neighbour's, please remember to turn off your engine while waiting to drop off or pick up your child. Thank you for your cooperation.



Artsmark
Gold Award
Awarded by Arts
Council England



ON TRACK TO EXCELLENCE

A member of Swale Academies Trust

Registered Office: Ashdown House, Johnson Road, Sittingbourne, ME10 2JS

Registered in England No. 07344732



At the National College, our **WakeUpWednesday** guides empower and equip parents, carers and educators with the confidence and practical skills to be able to have informed and age-appropriate conversations with children about online safety, mental health and wellbeing, and climate change. Formerly delivered by National Online Safety, these guides now address wider topics and themes. For further guides, hints and tips, please visit [nationalcollege.com](https://www.nationalcollege.com).

10 Top Tips for Parents and Educators

GUIDING YOUNG VOICES TO MAKE A DIFFERENCE

Bullying impacts the lives of many young people. In the UK, one in five pupils aged 10 to 15 report being bullied. The effects can be long-lasting, affecting mental health, school attendance and self-esteem, and can impact long-term development into adult life. Adults play a key role in building young people's confidence to speak out, support one another, and stand up to unkind behaviour. This guide offers ways to help youngsters make a positive difference.

- CELEBRATE DIFFERENCES**
Help young people value diversity by showing that what makes us different is also what makes us strong. Encourage them to learn about different cultures, languages, and abilities through books, films, and conversations. By appreciating uniqueness in themselves and others, children can grow into open-minded individuals who build inclusive and welcoming environments.
- MODEL RESPECT**
Children watch and learn from how adults behave. Use respectful language, show patience in disagreements, and treat others with fairness – especially in front of children. By modelling inclusive behaviour and challenging unkindness, adults set a lasting example that respect should be part of every interaction, whether online, at school, or at home. Be the change you want to make.
- SPOT THE SIGNS**
Adults and young people should learn how to recognise signs that someone may be experiencing bullying. This might include withdrawal from friends, hobbies or interests, changes in mood, reluctance to go to school, or unusual illness. Helping young people recognise these clues ensures that support can be offered sooner and problems do not go unaddressed.
- VALIDATE FEELINGS**
When a child shares something that worries them, it's important to listen carefully and validate how they feel. Respond with empathy – not judgement – and let them know it's okay to feel upset or confused. Offering reassurance and understanding helps young people feel safe about opening up, and builds the trust needed to talk again in future.
- TEACH ALLYSHIP**
Show children how to stand up for others in safe, respectful ways. Always remind one like sitting next to someone who's been excluded, reporting hurtful behaviour, or speaking up when they witness bullying. By practising these responses together, you're helping children develop the courage to be kind and to take action when it really counts.
- PROMOTE REPORTING**
Ensure young people know how to report bullying and feel confident that they'll be taken seriously. Talk to them about who they can speak to and what to expect when they do, such as reporting school incidents to teachers, and out-of-school bullying to parents or teachers. Reassure them that reporting is a brave and helpful choice – not tattling – and that it plays a vital role in keeping everyone safe.
- ENCOURAGE KINDNESS**
Everyday acts of kindness can make a big difference in creating safer, happier spaces. Encourage children to look out for one another by being helpful, saying kind words, or including someone who feels left out. These small actions set a strong example that kindness matters, and that it can be a powerful response to bullying.
- USE YOUR VOICE**
Encourage young people to speak up for themselves and others. Whether through story telling, school campaigns or peer-led projects, children can learn that their voice has power. Support them to express themselves confidently and safely, helping them understand that sharing experiences can challenge injustice and inspire real change in their communities.
- BUILD COMMUNITY AND BELONGING**
Children thrive when they feel supported. Help them build strong friendships, join clubs or teams, and connect with trusted adults who care. These networks offer comfort, encouragement, and protection – particularly during challenging times. Remind children that they don't have to face difficulties alone and that support is always within reach.
- SUSTAIN THE CONVERSATION**
Bullying awareness shouldn't be limited to one week each year. Create regular opportunities to talk about kindness, respect, and inclusion. Use books, news stories, and personal experiences as conversation starters. Embed anti-bullying messages into the school, and make tackling bullying a shared, ongoing commitment.

Meet Our Expert
Robert Alford is an experienced pastoral and safeguarding practitioner, specialising in tutorials, behaviour interventions, and attendance management. A recipient of the Diana Award for Anti-bullying, he has helped raise standards and improve Ofsted outcomes in some of the country's most challenging schools and colleges.

#WakeUpWednesday The National College

See full reference list on our website.
 X @wake_up_weds | Facebook /www.thenationalcollege | Instagram @wake.up.wednesday | TikTok @wake.up.weds

Users of this guide do so at their own discretion. No liability is entered into. Current as of the date of release: 06.11.2025

For more updates and events, please visit our website and follow us on X and Facebook.

- <https://www.thewhitstableschool.org.uk/>
- <https://www.facebook.com/TheWhitstableSchool>
- <https://x.com/TheWhitSchool>

Best Wishes,
The Whitstable School Team



Artsmark Gold Award
Awarded by Arts Council England



ON TRACK TO EXCELLENCE

A member of Swale Academies Trust

Registered Office: Ashdown House, Johnson Road, Sittingbourne, ME10 2JS

Registered in England No. 07344732