

21 November 2025

# NEWSLETTER!

Dear Families,

This past week was exceptionally successful and productive, offering many exciting highlights and important details to share. Please read on for more details and highlights from this week.

## Key Dates:

**27 November 2025** - Sixth Form Open Evening

**03 December 2025** - Year 7, 8 and 9 Parent Forum

**04 December 2025** - Year 12 Parents Evening

**09 December 2025** - Flu Immunisations – For Students 7–11-year groups

**11 December 2025** - Year 11 Parents Evening

**17 December 2025** – Christmas Dinner

**19 December 2025** - End of Term 2 (*Students leave at 12:55PM*).



The Whitstable School  
**ON TRACK TO EXCELLENCE**

**ADMISSIONS SEPTEMBER 2026**

**SIXTH FORM OPEN EVENING**

Thursday, 27 November 2025  
5:30PM- 7:00PM

New **Football Academy** curriculum pathway.

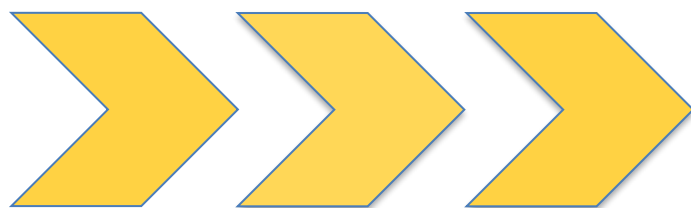
We look forward to meeting you at our Open Evening.  
Attendance is open to all and no advance booking is required.



Contact Us  
**01227 931300**



Website Us  
<https://www.thewhitstableschool.org.uk>



**NEXT WEEK IS  
WEEK A  
TIMETABLE**



**Artsmark  
Gold Award**  
Awarded by Arts  
Council England



**GOLD  
SCHOOL  
2020**

**ON TRACK TO EXCELLENCE**

**A member of Swale Academies Trust**

Registered Office: Ashdown House, Johnson Road, Sittingbourne, ME10 2JS

Registered in England No. 07344732

## HEADTEACHER MESSAGE

Dear Parents and Carers,

Thank you to everyone who attended our recent Key Stage 4 Parent Forum. These meetings are an important opportunity to discuss our systems, processes and the wider culture and ethos of the school. Following the feedback shared during the evening, we are taking several actions to strengthen our support for students and families.

### Exam Access Arrangements

One key area discussed was exam access arrangements. Currently, schools must gather evidence from teachers where a student may require additional time and this evidence is then reviewed by an external assessor who completes a series of tests. Traditionally, this process focuses on students who already have recognised special educational needs. However, we want to make this system more inclusive. We are formalising a clearer, more consistent process so that all students, regardless of ability, could be considered for access arrangements if we feel there may be a barrier that affects their learning or performance. This will link closely with our key assessment tasks, particularly across Year 9, Year 10, and Year 11, with arrangements also continuing into Sixth Form where appropriate.



### Assessment Dates and Website Information

Parents also asked for clearer information about assessment dates. While our website calendar already holds a wide range of dates, we agree that assessment windows should be easier to find and understand. Although individual subject assessments may change within those windows, we will ensure that parents can clearly see when each year group has their main assessments. For example, knowing that Year 10 pre-public examinations take place in early March is helpful when planning. We will also continue to publish revision guides for Year 10 this term, so students know what to focus on when preparing for these assessments.

### Sport and Extra-Curricular Opportunities

Sport was another area raised. We are working with our PE department to see how we can broaden the offer where possible. While some sports are seasonal, we will look at opportunities to increase access and variety for example, making greater use of sports such as cricket in the summer term.

### Attendance

Attendance remains a significant priority for the school. Our overall attendance is still below the national average, and we are seeing higher absence rates on Mondays and Fridays, which is concerning. We will continue to be clear and direct in our communication about attendance because we all understand how crucial it is for academic



**Artsmark  
Gold Award**  
Awarded by Arts  
Council England



**ON TRACK TO EXCELLENCE**

**A member of Swale Academies Trust**

Registered Office: Ashdown House, Johnson Road, Sittingbourne, ME10 2JS

Registered in England No. 07344732

progress, social development and mental health. We are also reviewing our procedures around parental communication, particularly when you phone in, to ensure messages are clear and that you receive timely responses. Please remember we are here to support your child's attendance in every way we can.

Thank you again for your continued support. Working together has a powerful impact on our young people and we appreciate everything you do to help them thrive.

Kind regards,  
Mr. A Holmes, Headteacher

## SCHOOL PASTORAL TEAM SAFETY MESSAGE



### **IMPORTANT: Urgent Safety and Community reminders**

Dear Parents and Carers,

The safety of our students and the respect we show our community remains our highest priority.

#### **1. Stranger Danger Warning**

We have received a report of an incident in the local area involving a man trying to lure young children into his car while they were walking home. This incident has been reported to the police. Please remind your children to be extremely wary of any strangers trying to talk to them and stress the importance of staying together with friends when out and about.

**Safeguarding is our utmost priority. If you have any immediate concerns regarding this or any other safety incident, please contact the Police immediately on 999 or notify our Safeguarding Team.**

#### **2. Safe Driving and Community Respect**

We urgently require your cooperation to ensure safe morning drop-off and afternoon dismissal.

- We urge all parents to observe speed limits on local residential roads, particularly Downs Avenue. Feedback regarding speeding cars impacting residents has prompted Canterbury Council to consider a speed survey and installing speed bumps.
- Double Parking dangerously obstructs traffic and forces children into the road.
- Speeding through the school zone poses a serious threat to anyone crossing.



We urge all drivers to strictly avoid double parking and to significantly reduce your speed in the school vicinity.



**Artsmark  
Gold Award**  
Awarded by Arts  
Council England



**GOLD  
SCHOOL  
2020**

**ON TRACK TO EXCELLENCE**

***A member of Swale Academies Trust***

*Registered Office: Ashdown House, Johnson Road, Sittingbourne, ME10 2JS*

*Registered in England No. 07344732*

### 3. Respecting Accessible Parking Spaces

We kindly remind all parents and visitors to respect our designated accessible parking spaces. These spaces are reserved for individuals who require proximity to the school entrance.

- Not All Disabilities are Visible: Please remember that many individuals with disabilities may not show outward signs.
- Permits Must Be Displayed: If you have a valid permit, please ensure it is clearly visible in your vehicle's windscreen.
- Cooperation is Key: We ask that you refrain from parking in accessible spaces unless you have a valid permit.

### 4. Engines Off for Clean Air

To help reduce air pollution, minimize noise levels, and respect our neighbours, please remember to turn off your engine while waiting to drop off or pick up your child.

***Please support our local community by remaining vigilant of speed limits and where possible, leaving five minutes earlier for your journey to avoid rushing.***



**P.S. Great news! Our students' behaviour walking on Downs Avenue has been reported as EXEMPLARY—a huge thank you to all our pupils, please keep up the fantastic work!**

**Thank you for your understanding and cooperation in making our school accessible for everyone.**



Artsmark  
Gold Award  
Awarded by Arts  
Council England



GOLD  
SCHOOL  
2020

**ON TRACK TO EXCELLENCE**

***A member of Swale Academies Trust***

*Registered Office: Ashdown House, Johnson Road, Sittingbourne, ME10 2JS*

*Registered in England No. 07344732*

## UPCOMING EVENTS

### **\*\* Sixth Form Applications Now Open!! \*\***

We are delighted to confirm that applications for **The Whitstable School Sixth Form** are officially open! Here are the key details you need:

- **Prospectus:** Check out our brand-new prospectus. Download your copy here: [↓ Sixth Form Prospectus](#)
- **Applications:** All applications should be made through Kent Choices, where you can peruse our full 2026 course offer. Apply here: [📄 Kent Choices](#)



### **Open Evening Reminder**

We look forward to welcoming you to our Open Evening on **Thursday, November 27<sup>th</sup> 5:30pm – 7:00pm.**

This is a great chance to:

- Hear about life in Sixth Form directly from our current students.
- Speak with our specialist subject teachers.

### **Need Advice?**

If you or your child would like to speak to Ms. Simons, Head of Sixth Form, regarding any aspect of the application process, please contact us at [tws\\_sixthform@swale.at](mailto:tws_sixthform@swale.at). We are excited to receive your applications!

### **Kent Choices Checklist: Stay On Track** 📄

We strongly encourage students in Year 11 to log on and familiarise themselves with the Kent Choices website as soon as possible. Use this quick tick list to help ensure your child is making great progress:

- Get logged on.
- Complete the online profile.
- Note down the open days of Colleges/Sixth Forms.
- Start to think about and make application(s).



**Artsmark  
Gold Award**  
Awarded by Arts  
Council England



**GOLD  
SCHOOL  
2020**

**ON TRACK TO EXCELLENCE**

**A member of Swale Academies Trust**

Registered Office: Ashdown House, Johnson Road, Sittingbourne, ME10 2JS

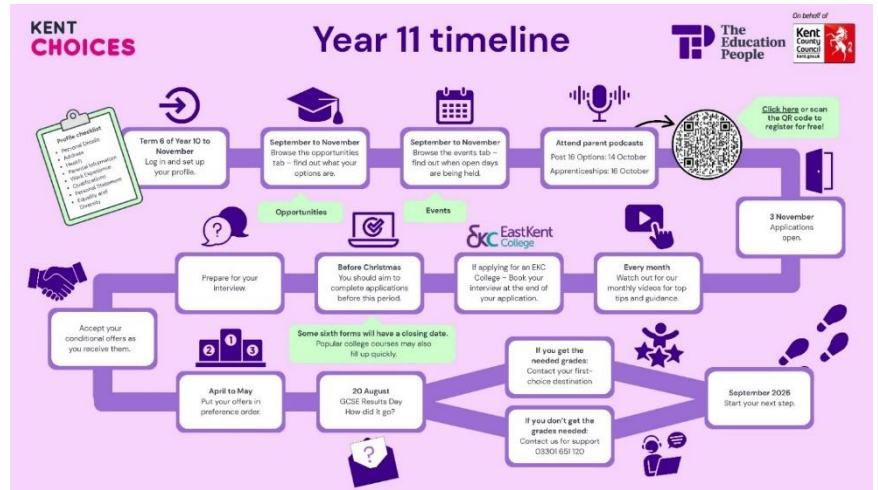
Registered in England No. 07344732

## Resources & Support

For helpful videos and information for both parents and students, please use this link:

[Kent Choices Resources](#)

Any queries or questions should be directed to a member of the careers team in school, or you can contact us via email at [tws\\_careers@swale.at](mailto:tws_careers@swale.at).



## \*\* Important reminder: Upcoming School Immunisations \*\*

### Seasonal Flu Vaccine (December 2025)

The Immunisation Service will be visiting the school on **Tuesday, December 9, 2025**, to offer the **Seasonal Flu Vaccine** to students from **Year 7 to Year 11**. Students in **Year 12 or 13** with an underlying health condition should contact their GP surgery to arrange their vaccination.

### Action Required:

- Please discuss this immunisation with your child.
- Complete the online consent form at: [www.kentimmunisations.co.uk](http://www.kentimmunisations.co.uk)
- **Deadline:** Please submit your form before **4:00 PM on December 4, 2025**. **School Code is: KT144354**

If your child cannot be vaccinated at school, you will receive an email with a link to book an alternative appointment at one of their clinics.

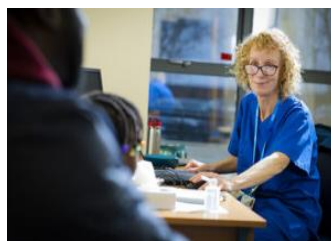
### HPV Vaccine (February/March 2026)

The Immunisation Team has also scheduled visits for the **HPV Vaccine** on the following dates:

- **Wednesday, February 25, 2026**
- **Wednesday, March 11, 2026** (Full-day visits)



Artsmark  
Gold Award  
Awarded by Arts  
Council England



**GOLD SCHOOL 2020**

**ON TRACK TO EXCELLENCE**

**A member of Swale Academies Trust**

Registered Office: Ashdown House, Johnson Road, Sittingbourne, ME10 2JS

Registered in England No. 07344732

The primary focus is **Year 8 students**. However, students in Years 9, 10 or 11 who have not yet received a dose of the HPV vaccine will also be included in these sessions if they are available.

## Further Information & Support

- **General Information:** For more details on the flu vaccine, visit [vaccineknowledge.ox.ac.uk/flu-vaccine](http://vaccineknowledge.ox.ac.uk/flu-vaccine) or [www.nhs.uk/vaccinations/child-flu-vaccine](http://www.nhs.uk/vaccinations/child-flu-vaccine).
- **General Questions:** If you have questions about the process for the immunisations, please contact the [school office](#).
- **Health Support:** For wider support regarding issues like sleep, behaviour, emotional support, and healthy lifestyles, Kent School Health supports children and young people aged four to nineteen. You can find helpful information at **Kent Family:** <https://family.kentcht.nhs.uk/>

## SIXTH FORM UPDATE

### \*\* Football Academy News: SCL Victory & Recruitment Events! \*\*

Our SCL squad secured a brilliant home victory yesterday (Wednesday, November 19th), defeating Kinetic Academy 5–0! The scoring was led by **Dylan (Year 12)**, who netted an outstanding four goals, with **Cian (Year 13)** adding the fifth. A very impressive performance from all the players!



**WHITSTABLE TOWN FC ACADEMY**  
PLAY · TRAIN · STUDY

## SCHOLARSHIP EVENTS

26/11/25 > SPORTS CONNECT PRESENTATION EVENING · 17:30-18:30 & 18:45-19:45

27/11/25 > THE WHITSTABLE SCHOOL PRESENTATION EVENING · 17:30-19:00

22/12/25 > SCHOLARSHIP GIRLS TRIAL · 10:00-11:30

22/12/25 > BOYS SECOND RECRUITMENT TRIAL · 18:00-19:30

WWW.FOOTBALL-FUTURES.COM



Artsmark  
Gold Award  
Awarded by Arts  
Council England



GOLD  
SCHOOL  
2020

ON TRACK TO EXCELLENCE

A member of Swale Academies Trust

Registered Office: Ashdown House, Johnson Road, Sittingbourne, ME10 2JS

Registered in England No. 07344732

## \*\* Parental Careers Support: Volunteer Needed! \*\*

As we strive to provide our students with the best possible foundation for their futures, we know that some of the most valuable lessons come from real-world experience.

We are reaching out to you, our wonderful parent community, hoping to build a collaborative network for our upcoming careers events.

Your professional insights could make a huge difference!

If you can support our students in any way (even just for an hour), please complete this [Google Form](#)

If you have any questions, please contact me via email at [tws\\_careers@swale.at](mailto:tws_careers@swale.at).

## THIS WEEK SO FAR...

### The Christmas Gift Grotto Returns! Support Our Holiday Appeal

As the holiday season approaches, we are dedicated to ensuring that every child experiences the joy of Christmas, especially those in need. To achieve this, the Christmas Gift Grotto will return this year, and we are reaching out for your support!

We are kindly requesting donations of **new Christmas gifts** that we can distribute to children who may otherwise not receive gifts this year. Any contribution, large or small, will bring happiness and a sense of belonging during this festive season.

Last year, we proudly provided gifts to just over 50 vulnerable families and the thoughtful donations were very much appreciated!

#### How You Can Help:

- **Donate Gifts:** Your donation can be a new toy, books, clothing or any other gift you feel would delight a child (or a gift they can give to their family).
- **Drop-Off Location:** Please drop off the presents at the school office or the safeguarding office.

#### "All Wrapped Up" Programme (Food Vouchers)

In addition to the Grotto, Miss Crocombe is overseeing the 'All Wrapped Up' programme. We can confidentially refer families in need who will receive a food voucher to help towards Christmas expenses.

**If you are aware of any families who would benefit from this programme, please let Miss Crocombe know. Thank you for your incredible generosity.**



**\*\* TRACK Excellence Raffle Winners Announced! \*\***

Each Wednesday, the school will run a 'TRACK Excellence' raffle for all students. To enter, students must have seven or more positive signatures over the two weeks. Students with negative signatures are still able to participate.

This week's winner is:  
**Cordu (Year 8)**



We've teamed up with local businesses for amazing rewards.  
This week's prize is vouchers for local café: **Revival**.

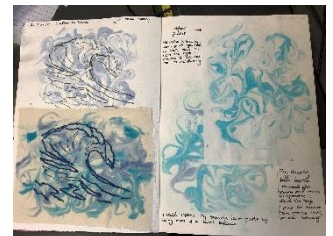


**\*\* Book of Commendation- Celebrating Student Success! \*\***

We are pleased to announce the following students have been recognised for exceptional work and have been added to the Book of Commendation.

**Art and Textiles:**

- **Axl and Jasmine (Year 9)** were commended for their excellent artwork in embroidery and hand drawing.



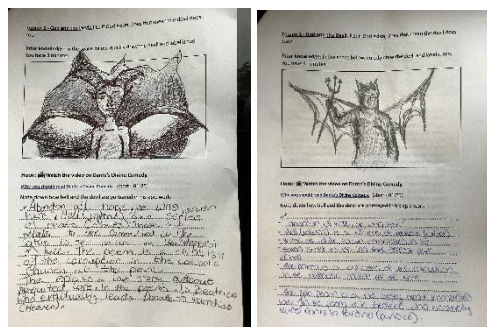
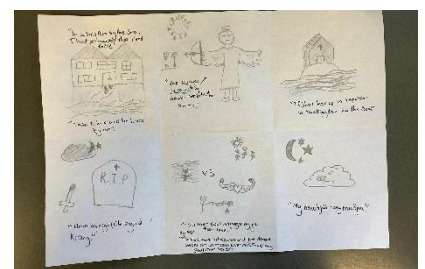
**RE:**

- **Sienna and Florence (Year 8)** were commended for their brilliant drawings of the devil during RE lesson about God and the Devil.



**English:**

- **Poppy and Isabella (Year 8)** were also commended for their exceptional work on a poem by Annabel Lee.



**Artsmark Gold Award**  
Awarded by Arts Council England



**GOLD SCHOOL 2020**

**ON TRACK TO EXCELLENCE**

**A member of Swale Academies Trust**

Registered Office: Ashdown House, Johnson Road, Sittingbourne, ME10 2JS

Registered in England No. 07344732


## \*\* Consistent Attendance: The Cornerstone of Success and Wellbeing \*\*

Attendance isn't just about learning in class; it's your **all-access pass** to everything exciting happening at The Whitstable School! We believe that the incredible clubs, trips and competitive events are the best reasons to keep school attendance at 100%.

We offer **over 30 extra-curricular clubs and activities** that turn a regular school week into something epic.

### Activities Include:

- Cross Trust events
- STEM clubs (Science, Technology, Engineering, Maths)
- Visitors talk
- Competitions
- Trips, and much more!

 **Remember:** We have exciting opportunities available every week within the school and consistent attendance is essential for students who want to participate and get involved!

- **For more information, please visit our website:**  
[TWS Extra- Curricular](#)



### Next Week's Key Events (Starting Monday, November 24th)

#### Road Safety Talk:

When: Monday, November 24th, 2:00 PM – 3:00 PM

What: Road Safety Performance (NDE)

Where: The Stage

#### Sport Science Workshop:

When: Wednesday, November 26th, 8:00 AM – 3:30 PM

What: University of Kent Workshop (KMI)

Who: Year 10 Students

#### Drama Competition:

When: Wednesday, November 19th, 3:10 PM – 4:30 PM

What: Shakefest (Weekly Drama Competition)



## NOTICE BOARD

### \*\* The Whitstable School Big Book Swap! \*\*

We are excited to announce our first **Big Book Swap** on **Thursday, November 27th, from 3:15 PM - 4:00 PM** in the Stage (please enter school through the main office).

We invite all families to donate any unwanted books!

- **How it Works:** Children are invited to choose two books to take home free of charge. If further books are chosen, a small donation is asked for.
- **Donations:** If you are having a sort-out before Christmas and have any books you would like to donate, please bring them to the Library before Tuesday, November 18th.

## BOOKSWAP



### \*\* Annual Policing Survey: Have Your Say \*\*

Matthew Scott, the Kent Police and Crime Commissioner, is currently undertaking an **Annual Policing Survey**. The survey seeks the public's views on trust in the Police, safety where we live, and what the Force's priorities should be.

TWS has been asked to share this survey with pupils and parents so that you can have your say on your experiences. Last year, over a thousand young people took part and directly influenced policy in Kent.

- **Take the Survey Here:** [Policing Survey Link](#)
- **Deadline:** The survey closes at the end of **December 25th**.

The results will be used to set Kent Police's priorities next year and inform how we can work together to improve safety. Thank you for any support you can provide.

### \*\* YOUNG CARERS AT THE WHITSTABLE SCHOOL \*\*

Did you know that The Whitstable School has a Young Carers Support Group running every Wednesday lunchtime in GZ2?

This group is run by Mrs James and is open to all Young Carers (registered or non-registered).

Whether it is to just sit and listen, talk and share or just be in the company of other young people with caring responsibilities, we are here!



## What is a Young Carer?

A young carer is a young person under 18yrs who provides practical and/or emotional support, usually to a family member who may have: A long-term health condition, illness or frailty, Physical Disability, Neurodevelopmental Disorder, poor mental health or substance misuse issue

If you are unsure if your child is a Young Carer, please contact Mrs James or see attached for more information [Young Carers Parent Resource](#)



 **Young Cooks!**

**Do you have what it takes to be crowned the next Young Cooks Champion?**

Are you **aged 6 - 18?**  
Do you have a flair for flavours and a passion for cooking?

You are invited to take part in our **Young Cooks cookery competition** with the winners receiving a share of £500

In addition, a finalist will be selected to cook at a **Showcase Lunch** at The Dog in Wingham and may have the opportunity to attend a **master class!**

**Closing Date:**  
**31st January 2026**

Scan or visit for more details & entry

 **SEK Schools** 

[sekgroup.org.uk/support/sek-schools/young-cooks-competition](http://sekgroup.org.uk/support/sek-schools/young-cooks-competition)



At The National College, our WakeUpWednesday guides empower and equip parents, carers and educators with the confidence and practical skills to be able to have informed and age-appropriate conversations with children about online safety, mental health and wellbeing, and climate change. Formerly delivered by National Online Safety, these guides now address wider topics and themes. For further guides, hints and tips, please visit [nationalcollege.com](https://nationalcollege.com).

## What Parents & Educators Need to Know about TRACKING DEVICES

Bluetooth tracking devices like Apple's AirTag and Samsung's SmartTags have exploded in popularity, with millions sold each year. These small tools help people locate their lost items, but their discreet design has also made them attractive for more sinister purposes. From stalking to bullying, tracking devices present unique risks that trusted adults need to understand and address.

### WHAT ARE THE RISKS?

- STALKING AND HARASSMENT**  
Because of their tiny size and unassuming appearance, tracking devices can easily be hidden in bags or clothing. They've been used to monitor individuals without their knowledge, with a lawsuit in the US alleging AirTags "the weapon of choice of stalkers and abusers". In the UK, use of tracking devices in coercive control and stalking cases reportedly rose by 317 percent between 2018 and 2023.
- INVASION OF PRIVACY**  
These devices are designed to share location data with the user via other people's phones, which can unintentionally broadcast someone's movements without their consent. This makes them vulnerable to being tracked by strangers without realising.
- TOOLS FOR BULLYING**  
Tracking devices could allow bullies to follow or locate their targets even outside of school. This makes it difficult for children to find refuge, potentially extending the trauma of bullying into spaces – like home – that should feel safe and secure.
- FALSE ACCUSATIONS**  
Because tracking devices are linked to user accounts, they could be misused to 'prove' ownership of someone else's possessions. Someone could, for example, plant a tracker on another person's belongings to falsely claim them as their own.
- DIFFICULT TO DETECT**  
Many tracking devices are designed to be discreet, but that also means they're easy to hide. Without proactive checking or the right tech to detect them, children and young people might not realise they're being tracked.

### Advice for Parents & Educators

- WATCH FOR WARNING SIGNS**  
If a child's peers always seem to know their location – whether in person or mixed at online – it could be worth checking for tracking devices. Some, like AirTags, will eventually make a noise if separated from their owner. Listen out for a chirping sound.
- USE DETECTION APPS**  
Apple devices running iOS 14.5 or later will notify users of unknown AirTags nearby. Android users can install Apple's 'Tracker Detect' or the third-party app 'iLocator' to scan for tracking devices from various manufacturers.
- CHECK LIKELY HIDING SPOTS**  
Common places where trackers may be planted include jacket linings, bag seams, pockets, or under bike seats. If you find one, take a photo of the serial number before disposing of it – this could help police trace the account it's linked to.
- HAVE THE CONVERSATION**  
Talk to your child about what tracking devices are, what signs to look out for, and how they might be misused. Emphasise the legal consequences of using them to prank, harass, or monitor someone.

**Meet Our Expert**  
Alan Martin is a seasoned technology journalist with bylines in Wired, TechRadar, The Guardian, The Evening Standard, The Telegraph, and The New Statesman. He specialises in consumer tech, online safety, and emerging risks in the digital landscape.

#WakeUpWednesday The National College

X @wake\_up\_weds | www.thenationalcollege | @wake.up.wednesday | @wake.up.weds

Users of this guide do so at their own discretion. No liability is entered into. Current as of the date of release: 19.11.2025

For more updates and events, please visit our website and follow us on X and Facebook.

<https://www.thewhitstableschool.org.uk/>  
<https://www.facebook.com/TheWhitstableSchool>  
<https://x.com/TheWhitSchool>

Best Wishes,  
The Whitstable School Team



Artsmark  
Gold Award  
Awarded by Arts  
Council England



ON TRACK TO EXCELLENCE

A member of Swale Academies Trust

Registered Office: Ashdown House, Johnson Road, Sittingbourne, ME10 2JS

Registered in England No. 07344732