

NEWSLETTER

Issue 5

06 FEBRUARY 2026

Key Term 3 Dates:

- 12 February 2026 - Change to our usual menu (Fish and Chips will be served on Thursday 12th instead of our usual Friday menu)
- 13 February 2026 - End of Term
- 23 February 2026 - Start of Term 4 (Week A Timetable)
- 25 February 2026 - HPV vaccinations Year 8 and catch up for 9, 10 & 11
- 11 March 2026 - HPV vaccinations Year 8 Catch up for 9, 10 & 11
- 27 March 2026 - End of Term 4



CONTACT US

Email: tw_s_admin@swale.at

Telephone: 01227 931300

Option 1 - Attendance

Option 2 - Pupil Admissions

Option 4 - Main Reception

To report an absence or other attendance enquiries:

Email: tw_s_attendance@swale.at

Stay informed, follow us for weekly updates, school news and student highlights.



[@TheWhitstableSchool](https://www.facebook.com/TheWhitstableSchool)

NEXT WEEK - B TIMETABLE

Next Week's Event Schedule (Feb 09– 13, 2026)

DAY	EVENT
Tuesday 10 th	<ul style="list-style-type: none"> Year 10 Queens College Cambridge Trip 07:30AM– 6:00PM
Wednesday 11 th	<ul style="list-style-type: none"> Year 10 Canterbury Crown Court Trip 08:AM – 2:30 PM Year 10 Rugby Fixtures - Wye School 2:10PM - 5:45PM Disneyland Parents' Meeting 05:00PM - 6:00PM

Book of Commendation: This Week's Winners

Year 7

Bethany, Connor, Florence and George: For baking delicious fork cookies



TRACK Winner: Harrison (Year 9)

Congratulations to Harrison for his outstanding effort this week!

By following our **TRACK values** and earning numerous positive points.

Are **You** on **TRACK**?



Whimech Robotics Takes on the World's Best

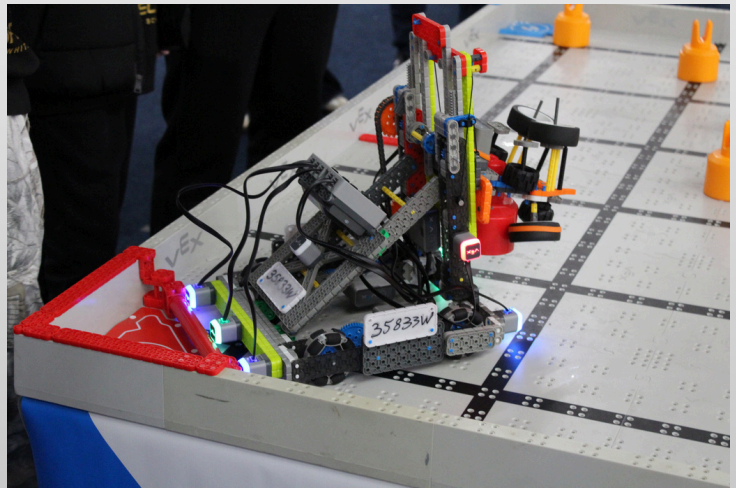
Two of our teams recently competed at The Oval in the largest VEX Robotics event across Europe, the Middle East, and Africa, joining 60 elite squads from four continents.

Team Whimech Prime delivered a strategic masterclass, averaging 119.17 points to secure 12th place in the finals, while Team Whimech excelled with an 82.17 average, outperforming top-tier teams from Germany and Türkiye. Beyond the scoreboard, our students acted as world-class ambassadors, collaborating with peers from Beijing to Sierra Leone and proving that they belong among the world's top young engineers.

You've shown world-class engineering and sportsmanship on a global stage—we are incredibly proud of you!

A huge thank you goes to

Mrs. Donovan-Bayley for her continuous effort and dedication in organising this opportunity and supporting our students every step of the way.



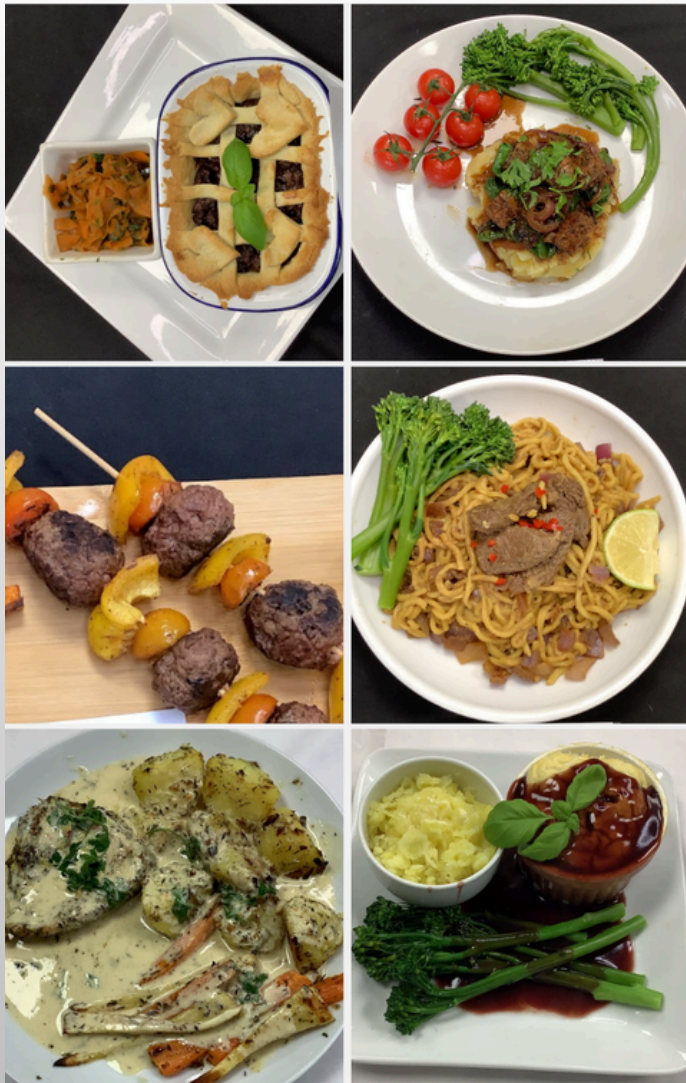
VEX IQ
ROBOTICS
COMPETITION



Workshop with Rhiannon Wise

This week, our Year 12 and 13 students took part in a bespoke writing workshop delivered by professional writer Rhiannon Wise. The session was designed to bridge the gap between ideas and the page, offering tailored support for students at all levels—from those finding their academic voice to high-achievers looking to polish their prose.

Whether focusing on Personal Statements, EPQs or future job applications, students walked away with practical tools to elevate their writing for school and beyond.



Food Prep & Nutrition: Cooking Up a Storm

Year 11 NEA2 Progress:

Our Year 11s have been busy mastering trial dishes for their NEA2 projects. From technical Bao buns and ravioli to delicate lemon meringue pies and profiteroles, the variety has been incredible. These skills will be put to the ultimate test next term during their 3 dishes in 3 hours final assessment. While JCQ rules mean we can't share photos yet, the aromas from the kitchen speak for themselves!

Year 10 Assessments:

Year 10 recently excelled in a practical assessment focused on specific dietary conditions. Students demonstrated top-tier organization, justifying their nutritional choices before independently producing high-quality Scotch eggs, pies, and pasta. Their ability to link theory to the plate has been exceptional.

TWS Year 10s Secure Hard-Fought Win

The TWS Year 10 rugby team kicked off their season with a gritty 30-20 victory over Wye School. Building on last year's momentum, the squad started "spritely" after an inspiring talk from Captain Max, with Danny crossing the line for an early try.

Despite a mid-match 15-15 deadlock, Sam's leadership organised the backs and kept the pressure on. TWS found their clinical edge in the final minutes, sealing the game with two decisive tries.

Standout Debuts: A warm welcome to Cal and Jack.

Man of the Match: Cal, for an exceptional first-game performance.

Whitstable School Football Academy: Weekly Roundup

It's been an exceptional run for the Football Academy, with our squads delivering dominant performances to secure top-of-the-table spots across three different leagues.

Schools Academies League: After falling behind early to Claremont Private School, the squad showed great character to storm back for a 4-1 victory. Jack, netted a clinical brace, while Samuel added two more to keep the team at the summit of the league.

National League: The Academy's momentum continued with a superb 3-1 away win at Maidstone United. Samuel was the standout performer with a fantastic hat-trick, supported by the brilliant leadership of Captain Alex. The win extends our lead at the top to three points.

SCL Development League: In a high-scoring 5-2 win against Soccer Elite FA, the boys showed incredible second-half intensity. Trailing at the break, goals from Jack, Cian a Taylor Docking double and a solo strike from Zerich sealed a well-earned three points.

Up Next: A massive home fixture against Hollands & Blair. Let's keep this momentum going!



The Whitstable School Careers Fair

Thursday 5th March 2026

The Aim:
To engage pupils through displays and discussions.
To provide the pupils with information on different career paths
To show the pupils a range of different careers and industries

09:00-15:10PM
Location
Bellevue Rd, Whitstable
CT5 1PX

To join us and get a stand at our event please contact the careers team on the below email.

01227931300 tws_careers@swale.at

Upcoming Key Events

Sixth Form Interviews:

Interviews for Year 11 students are underway! Please check Kent Choices regularly for your scheduled time and further details. We look forward to seeing your applications come to life.

Annual Careers Fair:

Our Careers Fair returns on March 20th! This is a prime opportunity for Years 9-13 to network with employers, discover new industries, and gather inspiration for your next steps after TWS.

🎭 Stage Academy: The Addams Family is Coming!

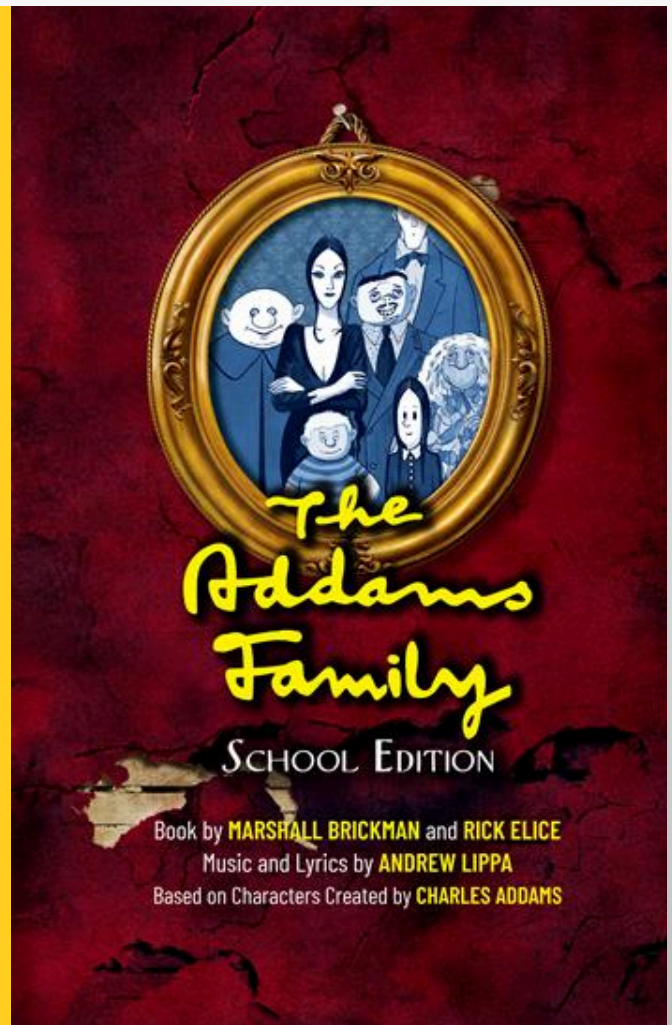
After the glittering success of their Christmas show, the Stage Academy is straight back to work. This week, the spotlight was on auditions as students competed for roles in our upcoming summer musical, ***The Addams Family***.

The energy in the studio has been "altogether spooky," and we are incredibly excited for this next project. Stay tuned for casting announcements and exclusive sneak peeks into our rehearsal process!

Relive the Magic

If you missed our spectacular Christmas show in December or simply want to experience it again, you can watch a short summary video of the performance here:

[Christmas Show Highlights](#)



Investing in Excellence: Support The Whitstable School

At The Whitstable School, we are dedicated to providing an outstanding learning environment where every student can thrive. To ensure our pupils have access to the best possible tools for success, we are launching a community investment initiative to modernize our facilities.

Your contributions will focus on three transformative areas:

- Technology: Upgrading hardware and software to prepare students for a digital future.
- Sports: Enhancing equipment and facilities to promote physical health and teamwork.
- Literacy: Expanding our library and classroom resources to foster a lifelong love of reading.

Every donation, regardless of size, directly impacts the daily classroom experience and helps us build a brighter future for our pupils. We sincerely appreciate the generosity of our community.

How to Donate

If you would like to support our students, please complete and submit our

[TWS Donations Form](#) 

📣 Important Reminders for Parents & Carers

- Health & Immunisations:** A reminder for Year 8 parents to submit your HPV vaccination consent or decline via kentimmunisations.co.uk by February 20th, 2026. This session will also include MMR vaccinations and catch-up HPV doses for students in Years 9, 10, and 11 who may have missed previous dates.
- Parking & Student Safety:** To ensure the safety of our students and accessibility for all, please do not park in disabled spaces or block the school parking gates during drop-off and pick-up. We kindly ask that you park further away from the school gates and use designated areas to keep the entrance clear and safe.

FRIDAY 20TH MARCH 2026

MOVIE MAGIC

DANCE SHOWCASE

With music masterpieces from your favourite motion pictures, witness the talents of TWS' dancers!

Doors open 5:45pm
Curtain 6:00pm

TICKETS AVAILABLE VIA [TICKETSOURCE](https://www.ticketsource.co.uk).

10 Top Tips for Parents and Educators SUPPORTING SAFE USE OF AI

Artificial intelligence (AI) is increasingly woven into young people's digital lives. It can offer some educational benefits and day-to-day assistance; however, it also raises concerns about misinformation, privacy, fairness, and safety. This guide provides parents and educators with practical strategies to support young people to navigate AI tools responsibly, and to use them safely and with discernment.

- 1 DEMYSTIFY WHAT AI REALLY IS**
 Children encounter AI in most online places, including games, streaming platforms, and social media. Explain that AI derives from past data to make decisions, but it doesn't think or feel like humans. Use age-appropriate examples, like how recommendations on YouTube or health work, to build understanding and prevent false beliefs about AI being all-knowing or alive.
- 2 TALK ABOUT RISKS OF MISINFORMATION**
 AI can create convincing false information, including deepfakes, videos, photos, and fake text. Encourage children to think critically about what they see and read. Teach them to double-check information using reliable sources, to look at images and videos carefully, and to ask an adult if something doesn't seem right.
- 3 DISCUSS DATA AND PRIVACY**
 Explain that AI systems learn by analysing lots of data, sometimes including personal information. Help young people to be mindful of what they share online and why protecting like personal data matters. Model good practices like turning off permissions for apps or reviews when not needed, and voice assistants like Alexa or Siri.
- 4 ENCOURAGE CREATIVE USE OF AI**
 Support children when using AI tools to explore ideas, make art, or build projects. This fosters confidence, imagination, and independent thinking, when children use AI creatively rather than just passively consuming it, they are more likely to stay engaged and make thoughtful choices.
- 5 USE AGE-APPROPRIATE AI TOOLS**
 Not all AI platforms are suitable for children. Choose tools designed for education or creativity, with clear safety policies. Review terms of use and privacy settings, and help children use AI to suit appropriate terms. For example, use AI to generate images with guidance and boundaries in place.
- 6 USE AI TOGETHER**
 Exploring AI tools together can help adults understand how they work and spot potential issues. Try co-writing a story with an AI writing assistant or experimenting with an AI art tool. This encourages curiosity, helps you stay informed about the latest AI tools, and allows you to reinforce safe and respectful use while modelling critical thinking.
- 7 SET BOUNDARIES FOR AI USE**
 Establish when, where, and how AI tools can be used, just as you would with any digital technology. For example, you might agree not to use AI tools to complete school assignments unless permitted, or to avoid unsupervised use of voice assistants. Consistent boundaries help change norms and prevent misuse.
- 8 WATCH FOR OVERRELIANCE**
 Some AI tools, like homework help apps, may be tempting shortcuts. Encourage children to use AI to support their learning, not replace it. Celebrate effort and process over perfect answers. Remember that mistakes are part of learning and that relying too heavily on AI can limit their understanding.
- 9 TEACH DIGITAL ETHICS AND LITERACY**
 Help children explore how AI works, where it might be biased, and why children should engage with AI critically, not just passively. Encourage them to understand that not all people use AI for legitimate purposes. Some use AI to deceive or harm. Encourage questions about fairness, representation, and who benefits from search tools that talk about algorithms, echo chambers, and the spread of misinformation on social media.
- 10 STAY CURIOUS AND INVOLVED**
 AI is developing rapidly, and staying informed helps you support the young people in your care. Follow trusted sources for updates and keep the conversation going. If a child brings up a new AI tool, take the opportunity to learn about it together. Discussing interesting bits that don't scare or frighten is key.

Meet Our Expert
 Home to the world's largest CPD library for educators, The National College has transformed the way education establishments go about developing their workforce and raising compliance. Our three memberships help all phases and types of setting raise standards, save time, reduce risk, and build a culture of improvement.

WakeUp Wednesday The National College

📧 @wake_up_weds 🌐 /www.thenationalcollege 📺 @wakeup.wednesday 🎵 @wake.up.weds

Users of this guide do so at their own discretion. No liability is entered into. Current as of the date of release: 04.02.2023

★ Free Local Family Hub Support

Access a wide range of free groups and workshops from 23rd February – 2nd April 2026 designed to support TWS families:

For Parents: Workshops on Strengthening Family Relationships, "Ready for Baby" sessions, and specialist advice on Supporting Your Teen's Mental Health.

For Youth: The Compass program (11+) for wellbeing and Speak Out youth groups.

Practical Help: Jobcentre Plus sessions for budgeting/employment and parenting advice drop-ins.

Early Years: Baby Massage, Stay & Play and infant feeding support.

🔗 View full timetables and book online: www.kent.gov.uk/familyhub