

NEWSLETTER

Term 5, Issue 2

24 APRIL 2026

Key term dates

13 April 2026 - Start of Term 5
22 May 2026 - End of Term 5

Stay Up to Date

For a full breakdown of daily activities and club timings, please visit our website.

TWS School Calendar
TWS Extra-Curricular Clubs- Term 5

Note: For detailed weekly event schedules, please refer to the dedicated section later in this newsletter or check the school website.

For our new school meals menu, please visit our website:

School Meals



CONTACT US

Email: tws_admin@swale.at
Telephone: 01227 931300
Option 1 - Attendance
Option 2 - Pupil Admissions
Option 4 - Main Reception

To report an absence or other attendance enquiries:

Email: tws_attendance@swale.at

Stay informed, follow us for weekly updates, school news and student highlights.

 [@TheWhitstableSchool](https://www.facebook.com/TheWhitstableSchool)

NEXT WEEK - B TIMETABLE

Dear Parents,

Thank you for your continued support, particularly for those young people in Year 11 and Year 13 as they prepare for their final examinations. This is a crucial time and consistent, focused revision at home will make a significant difference.

Exam timetables have now been shared and we encourage students to plan their revision carefully. Using a structured revision timetable will help ensure they are preparing for the right exams at the right time and managing their workload effectively.

As always, the school is here to support. If you or your child need any additional guidance or resources, please do get in touch.

For parents of Year 10 students, the upcoming Statistics exam is an important opportunity. Regular revision now can help secure an early GCSE pass, which will provide a strong foundation heading into Year 11.

For students in Years 7, 8 and 9, strong revision habits begin with consistent completion of homework. The most successful students develop routines beyond the school day, including independent study and regular reading to build vocabulary and understanding.

Education does not stop at the end of the school day. Developing these habits now will support students throughout their GCSEs and into sixth form and beyond.

Thank you again for your ongoing support.

Mr Holmes, Headteacher

Events Schedule (April 27 – May 01, 2026)

DAY	EVENT
Monday 27th	<ul style="list-style-type: none"> • GCSE Fine Arts, Textile and Photography Exams Monday 27th - Thursday 30th April 2026
Wednesday 29th	<ul style="list-style-type: none"> • Shakefest 15:10 - 16:30
Thursday 30th	<ul style="list-style-type: none"> • Vaccinations - Year 9 (optional for Years 10 & 11) • Stage Academy 15:10 - 16:30

A Friendly Reminder: School Parking & Safety

We would like to say a huge thank you to the many parents and carers who help keep our school gates safe by parking considerately during the busy morning and afternoon runs. To ensure the safety of all our children and to keep the school running smoothly, we would like to kindly share a few reminders regarding our site:

Staff Car Park: We ask that parents please refrain from using the staff car park. Keeping this area restricted to staff helps us manage the flow of people and vehicles safely.

Car Park Gates: Please ensure that the entrance to the car park remains clear at all times. Even a few minutes of parking here can block essential access.

Disabled Parking Bays: These spaces are vital for our Blue Badge holders and those with specific accessibility needs. We would be very grateful if you could keep these bays free for those who truly need them.

We understand that parking near the school can be a challenge, but your cooperation makes a world of difference in keeping our students safe. Thank you for your continued support and understanding!

Are You on TRACK?



TRACK Winner: Louie (Year 7)

Congratulations to Louie for his outstanding effort this week!

By following our **TRACK values** and earning numerous positive points.

Book of Commendation: This Week's Winners

Year 7

Demian - for impressive RE project work

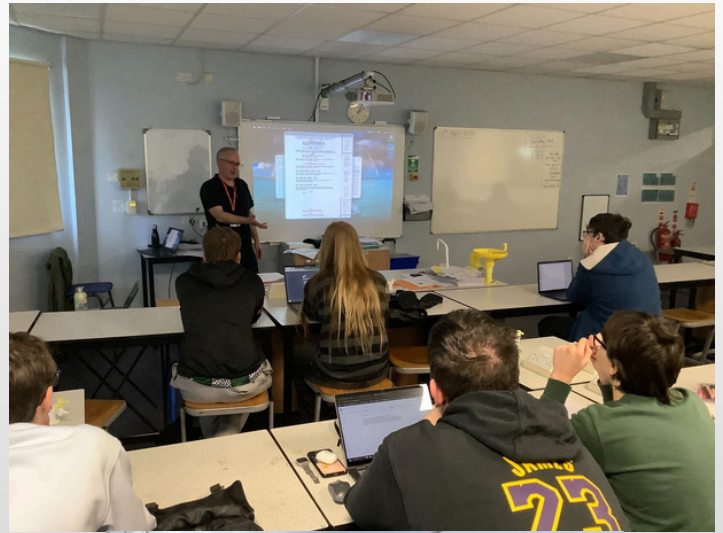


Industry Insight: Year 12 Scriptwriting Workshop

This Monday, Year 12 Film Studies students enjoyed an inspiring workshop led by veteran scriptwriter Glen Laker (Vera, Holby City, The Chelsea Detective).

With 30 years of industry experience, Glen shared the rigorous reality of bringing a story to life—from the initial pitch to the final scene—noting that scripts often undergo 15 drafts before production.

It was an invaluable opportunity for our students to learn from a seasoned pro. Special thanks to Glen and his son, Toby (Year 12), who is pictured on the set of The Chelsea Detective.



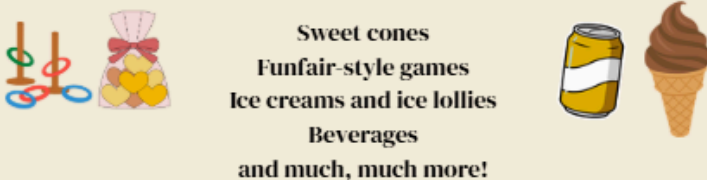
THE WHITSTABLE ENTERPRISE FAIR



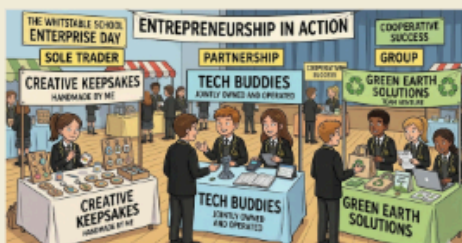
The 13th and 15th of May

This term Year 10 business students are going to consolidate the learning from terms 1-4 (Theme 1 of the GCSE course) by applying everything that we have learnt so far and setting up their own businesses.

The types of Businesses that will be running during lunchtime will include:



Please bring in some money to help support our students businesses!



Year 10 Business students are launching their very own mini-enterprises at lunchtime!

Following a term of hard work, our students are putting their classroom theory into practice. From product design to financial planning, they have managed every aspect of their unique stalls. This is a fantastic chance to see their creativity and business acumen in action.

Important School Updates & Reminders

- **Health & Immunisations:**

The Immunisation Service will be visiting on 30/04/2026 and 21/05/2026 (8:00 am start) to administer the Td/IPV and MenACWY vaccinations.

Primary Focus: All Year 9 students.

Catch-ups: Eligible students in Years 10 and 11 will also be included if they missed previous sessions.

Additional Vaccines: In line with the "Making Every Contact Count" initiative, the team will also offer catch-up doses for MMR and HPV.

Parents of children missing any of these vaccinations will be contacted directly by the NHS team. Please ensure all consent forms are completed promptly.

- **Parking & Student Safety**

To ensure the safety of our students and maintain accessibility for all, please do not park in designated disabled spaces or block school parking gates. We kindly ask that parents and carers park further away from the school entrance to keep the area clear and safe for pedestrians.

- **Community Respect & Litter**

We have received reports of littering and disrespectful behavior toward local residents. The School takes these reports very seriously; any students identified behaving disrespectfully or dropping litter, inside or outside of school grounds, will face appropriate sanctions and negative behavior points. We expect all students to represent our school with pride and respect for our neighbours.

- **Allergen Awareness**

The safety of our students is our top priority. While it is impossible to guarantee a 100% allergen-free environment in a busy school, we strive to be as allergen-aware as possible. We kindly ask for your support by ensuring packed lunches and snacks do not contain:

- Packaged nuts (peanuts, tree nuts, etc.)
- Nut-based bars (cereal, granola or chocolate bars)
- Spreads (Peanut butter or chocolate-hazelnut spreads like Nutella)
- Sauces (Peanut-based sauces like satay)
- Sesame (Seeds, hummus or sesame crackers)

- **Investing in Excellence: Support TWS**

We are launching a community initiative to modernise our facilities in Technology, Sports and Literacy. Every donation directly impacts our pupils' daily experience.

If you would like to support our students, please complete and submit our our donation form. We sincerely appreciate your generosity!

[TWS Donations Form](#) 

At The National College, our WakeUpWednesday guides empower and equip parents, carers and educators with the confidence and practical skills to be able to have informed and age-appropriate conversations with children about online safety, mental health and wellbeing, and climate change. Formerly delivered by National Online Safety, these guides now address wider topics and themes. For further guides, hints and tips, please visit nationalcollege.com.

What Parents & Educators Need to Know about YOUTUBE

WHAT ARE THE RISKS?
INAPPROPRIATE CONTENT
 YouTube is free and can be accessed across multiple devices, even without an account. While some videos are marked as 'age restricted', this relies on uploader honesty and automated moderation, meaning children and young people may still encounter unsuitable content if these measures aren't taken.

TRENDS AND CHALLENGES
 Popular trends and challenges can be entertaining and widely shared. While many are harmless, some can be risky or harmful if copied. For example, the 'salt and ice challenge' has caused injuries when imitated.

EXPOSURE TO EXTREME CONTENT
 The platform's algorithm often promotes content that attracts high engagement, which can sometimes include videos containing extreme viewpoints, misinformation, or risky behaviour. As children and young people watch more of this content, similar videos are likely to be recommended by YouTube's algorithm, therefore reinforcing the exposure.

CONNECTING WITH STRANGERS
 YouTube includes social features such as comments and direct messaging. This means young users can interact with people they don't know, potentially exposing them to inappropriate language, cyberbullying, or unwanted contact. Young content creators may be especially vulnerable.

SUGGESTED CONTENT
 YouTube recommends videos based on what a user has previously watched. While this can enhance the experience, it may also encourage binge-watching and excessive screen time, particularly when Autoplay is enabled. Without an account, users are shown trending videos, which are not always age-appropriate.

SHORT-FORM CONTENT IMPACT
 YouTube Shorts - short, fast-paced videos - are designed for continuous viewing. This style of content can be highly engaging but may also contribute to increased screen time and difficulties with maintaining focus over longer periods.

Advice for Parents & Educators

CONSIDER YOUTUBE KIDS
 YouTube Kids can help reduce young users' exposure to unsuitable content by filtering videos into age groups, such as preschool, younger, and older children. However, as moderation is automated, it should be used alongside active supervision.

USE PARENTAL CONTROLS
 Google Family Link allows adults to filter content, monitor usage, and manage younger users' screen time. Supervised Accounts offer a gradual step up from YouTube Kids, enabling children to explore the platform with appropriate safeguards.

CHECK PRIVACY SETTINGS
 If a child in your care uploads content, consider setting videos to Private or Unlisted so they are only shared with trusted viewers. Disabling comments can also help reduce unwanted interaction from strangers.

WATCH TOGETHER
 Spending time watching YouTube with the children and young people in your care can help you understand what they enjoy and guide your conversations about content. Tools like Downtime in Family Link can also help limit unsupervised viewing.

Meet Our Expert
 Alan Martin is an experienced technology journalist who has written for publications including Wired, TechRadar, Tom's Guide, The Evening Standard and The New Statesman.

#WakeUpWednesday The National College

See full reference list on our website
 @wake_up_weds /www.thenationalcollege @wake.up.wednesday @wake.up.weds

Users of this guide do so at their own discretion. No liability is entered into. Current as of the date of release: 22.04.2026

Kent Family Hub

Understanding Your Child

For parent/carers that would like to know more about sensitive and effective parenting. For parents with young people in school years 7 to 11.

10 week course exploring:
 Tuning Into Young People
 Exploring Feelings
 Parenting Styles
 Communication
 Supporting Parent Child Relationships

DATE: Wednesday 29th April
TIME: 12:30pm - 2:30pm
VENUE: Herne Bay Family Hub, Kings Road, Herne Bay, CT6 5RG

To book your space, please visit:
www.kent.gov.uk/familyhub

Proud sponsor of **TOGETHERNESS**
 Raising emotional health together

Visit your local Family Hub today
www.kent.gov.uk/familyhub

Kent Family Hub

30/40

THE HORSEBRIDGE WHITSTABLE

SUMMER OPEN EXHIBITION

17-26 JULY

Kent Libraries

Make your summer count

Volunteer at your local library

READ to the BEAT
 Summer Reading Challenge

Support your community, inspire young readers, and help bring the Summer Reading Challenge to life!

- Gain experience and skills
- Build your confidence
- Make a real difference

GO ALL IN.

For more information speak to your local library team, visit our website, or scan the QR code to apply online.

Time to Give
kent.gov.uk/libraries

Kent County Council
kent.gov.uk

Read to the Beat illustrations by Harry Woodgate, illustrations and logo © The Reading Agency 2026